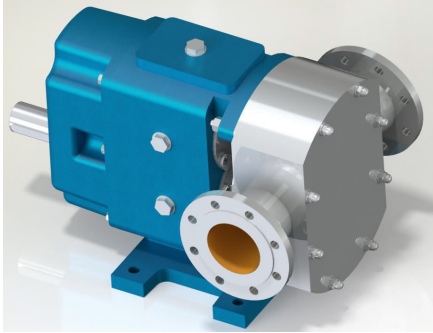




## GQT 4" Rotary Lobe Pump



### Performance:

Flow rate	85.5 m <sup>3</sup> /h
Pressure	1 - 7 bar
Temperature	0 - 150 °C
Speed	1 - 500 d/d
Viscosity	150 - 250000 SSU

- 4" Standard Port Size
- 4" Enlarged Port Size

### Technical Features:

- ✓ Rotary lobe pump
- ✓ 4" flanged threaded connections
- ✓ Suitable for hygienic applications involving food
- ✓ Good clean in place qualities
- ✓ Gentle, low pulsation pumping mechanism
- ✓ Compact design
- ✓ Various material options
- ✓ Various sealing options
- ✓ Available with sanitary clamp connection and heating jacket
- ✓ Motor or gearbox drive available
- ✓ 230v, three phase 50/60hz motors available
- ✓ Manufactured according to CE regulations

### Applications:

- ✓ Sanitary and hygienic applications
- ✓ Shear sensitive products
- ✓ Food processing
- ✓ Pharmaceutical
- ✓ Chemical
- ✓ Paper and pulp
- ✓ Gels and greases
- ✓ Paint and dyes

### Material Options:

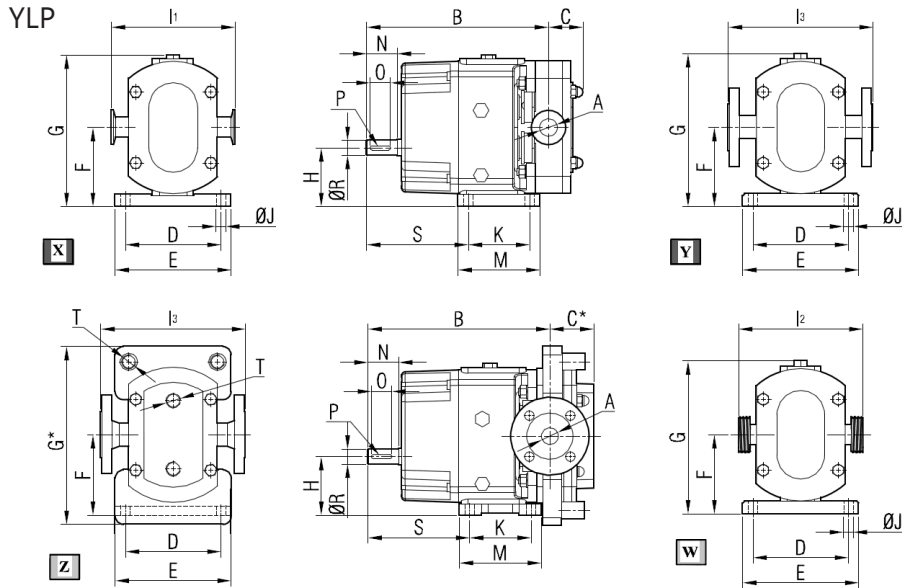
- ✓ Pump body & cover: Cast iron
- ✓ Lobe casing & lobes: Steel cast, stainless AISI 304 / 316
- ✓ Bearings: Bearing
- ✓ Sealing: Mechanical seal, lip seal

Capacity & Power Table

Capacity	Speed (rpm)	Pressure			Viscosity
		0 Bar	3.5 Bar	7 Bar	
5	30	4 HP	4 HP	5.5 HP	250000 SSU
9.9	60	5.5 HP	5.5 HP	7.5 HP	250000 SSU
25	150	10 HP	15 HP	15 HP	75000 SSU
33.4	200	10 HP	15 HP	20 HP	15000 SSU
50.2	300	10 HP	15 HP	30 HP	2500 SSU
56	350	10 HP	15 HP	30 HP	500 SSU
62	400	10 HP	20 HP	30 HP	150 SSU

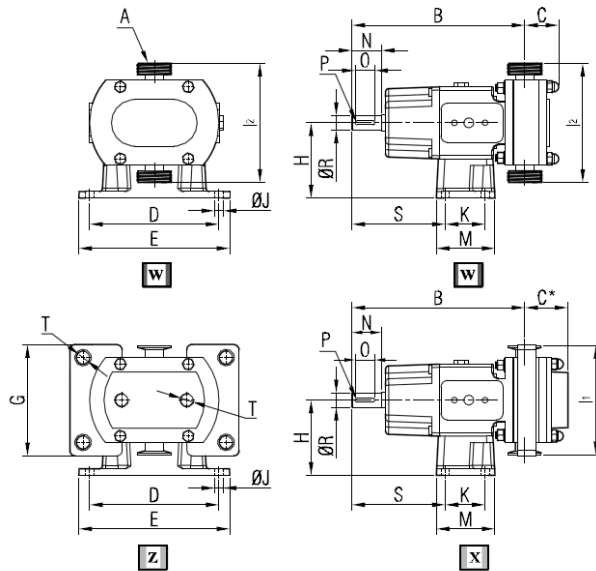


## Pump Dimensions:



X	Pump with Sanitary Clamp Connection
Y	Pump with Flange Connection
Z	Pump with Heating Jackets
W	Pump with Male Thread Connection
B	For Pump with Code 001
B*	For Pump with Code 002

Pump Code	A	B	B*	C	C*	D	E	F	G	G*	H	I <sub>1</sub>	I <sub>2</sub>	I <sub>3</sub>	J	K	M	N	O	P	R	S	T	kg	
YLP6	285	DN100	580	594	110	137	300	360	228	444	472	158	-	-	484	21	210	270	100	85	16x10	55	315	1"	233



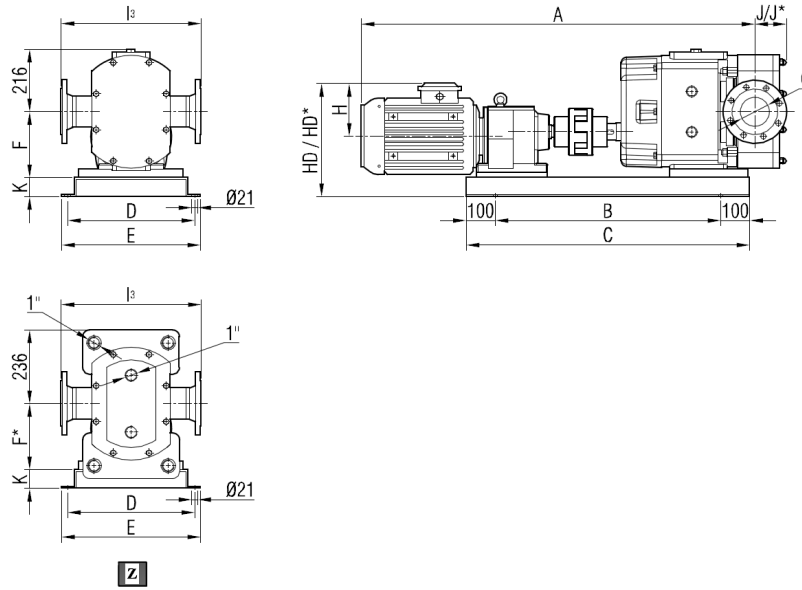
X	Pump with Sanitary Clamp Connection
Z	Pump with Heating Jackets
W	Pump with Male Thread Connection
B	For Pump with Code 001
B*	For Pump with Code 002

Pump Code	A	B	B*	C	C*	D	E	G	H	I <sub>1</sub>	I <sub>2</sub>	J	K	M	N	O	P	R	S	T	kg	
YLP6	285	DN100	580	594	110	137	340	380	333	290	316	368	17	159	280	100	85	16x10	55	198	1"	241
		DN125									388	424										



## Coupling Dimensions - Gearbox Drive::

YLP6



\*\*\*Add 14 mm to A dimension for 002 type pump.

Pump Code	G	I <sub>3</sub>	J	J*
YLP6 001	285	DN100	484	110

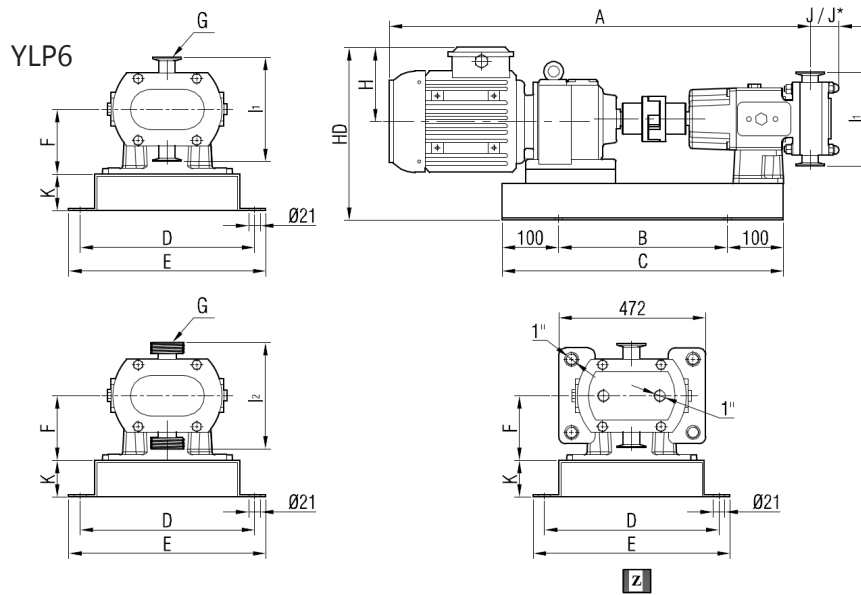
I <sub>3</sub>	Pump with Flange Connection
Z / HD* / F* / J*	Pump with Heating Jackets

Motor Power & Speed	A	HD	HD*	H	B	C	D	E	F	F*	K	Kg
15 hp / 11 kw	1581	493	493	225	960	1160	510	550	295	295	65	512
43/105 d/d (rpm) IRAM92/160M												
20 hp / 15 kw	1625	457	502	248	850	1160	440	480	250	295	65	544
68/127 d/d (rpm) IRAM92/160L												
20 hp / 15 kw	1548	457	502	248	850	1050	440	480	250	295	65	517
131/380 d/d (rpm) IRAM82/160L												
25 hp / 18.5 kw	1706	542	542	248	1060	1260	550	590	321	321	105	691
50/93 d/d (rpm) IRAM103/180M												
25 hp / 18.5 kw	1639	516	516	248	960	1160	510	550	295	295	65	564
85/223 d/d (rpm) IRAM92/180M												
20 hp / 18.5 kw	1560	480	525	248	850	1050	440	480	250	295	65	537
237/456 d/d (rpm) IRAM82/180M												
30 hp / 22 kw	1744	542	542	248	1060	1260	550	590	321	321	105	716
55/93 d/d (rpm) IRAM103/180L												
30 hp / 22 kw	1673	542	516	248	960	1160	510	550	295	295	65	589
105/464 d/d (rpm) IRAM92/180L												

All dimensions are mm. Flanges are PN16



## Coupling Dimensions - Gearbox Drive::



\*\*\*Add 14 mm to A dimension for 002 type pump.

Pump Code	G	I <sub>1</sub>	I <sub>2</sub>	J	J*
YLP6	285	DN100	316	368	110
001		DN125	388	424	137

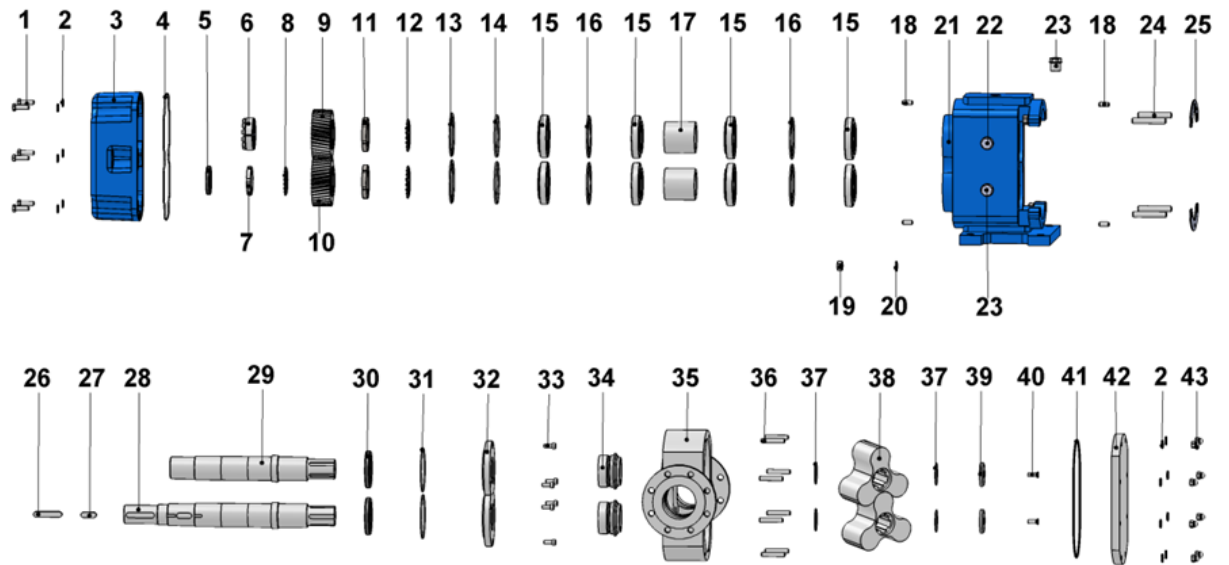
I <sub>1</sub>	Pump with Sanitary Clamp Connection
I <sub>2</sub>	Pump with Male Thread Connection
Z / J*	Pump with Heating Jackets

Motor Power & Speed	A	HD	H	B	C	E	F	F	K	Kg
15 hp / 11 kw	1581	559	225	900	1100	560	600	290	65	525
43/105 d/d (rpm)   IRAM92/160M										557
20 hp / 15 kw	1625	556	248	800	1000	560	600	290	65	535
68/127 d/d (rpm)   IRAM92/160L	1548	556	248	800	1000	560	600	290	65	535
20 hp / 15 kw	1548	556	248	800	1000	560	600	290	65	535
131/380 d/d (rpm)   IRAM82/160L	1548	556	248	800	1000	560	600	290	65	535
25 hp / 18.5 kw	1706	622	248	900	1100	560	600	290	65	577
50/93 d/d (rpm)   IRAM103/180M	1706	622	248	900	1100	560	600	290	65	577
25 hp / 18.5 kw	1639	581	246	800	1000	560	600	290	65	555
85/223 d/d (rpm)   IRAM92/180M	1639	581	246	800	1000	560	600	290	65	555
20 hp / 18.5 kw	1560	579	246	800	1000	560	600	290	65	555
237/456 d/d (rpm)   IRAM82/180M	1560	579	246	800	1000	560	600	290	65	555
30 hp / 22 kw	1744	622	248	900	1100	560	600	290	65	602
55/93 d/d (rpm)   IRAM103/180L	1744	622	248	900	1100	560	600	290	65	602
30 hp / 22 kw	1673	587	248	900	1100	560	600	290	65	602
105/464 d/d (rpm)   IRAM92/180L	1673	587	248	900	1100	560	600	290	65	602

All dimensions are mm. Flanges are PN16



## Spare Parts List:



No.	Part Name.	Qty.	No.	Part Name.	Qty.
1	Hex Screw M12x40	6	23	Caps R1"	2
2	M12 Washer	14	24	Studbolt M16x100	4
3	Back Cover	1	25	Adjusting Plate	2
4	Back Cover O-Ring	1	26	Coupling Key 16x10x85	1
5	Seal $\phi 60 \times \phi 85 \times 10$	1	27	Gear Key 16x10x46	1
6	Squeezer 65	1	28	Driving Shaft	1
7	Lock Nut M65x2	1	29	Driven Shaft	1
8	Lock Washer M65	1	30	Lip Seal $\phi 78 \times \phi 110 \times 13$	2
9	Right Helical Gear	1	31	Bearing Cover O-Ring	2
10	Left Helical Gear	1	32	Bearing Cover	2
11	Lock Nut M70x2	2	33	Hex Socket M10x25	6
12	Lock Washer M70	2	34	Mechanical Seal	2
13	Internal Circlip ( $\phi 125$ )	2	35	Lobe Casing	1
14	Circlip Front Spacer	2	36	Studbolt M16x70	8
15	Bearing 30214 A	8	37	Lobe O-Ring	4
16	Bearing Spacer Sheet Metal	4	38	Lobe	2
17	Spacer	2	39	Shaft Nut	2
18	Pin $\phi 12 \times 30$	4	40	Countersunk Head Screws M10x30	2
19	M16 Nut	4	41	Cover O-Ring	1
20	M16 Washer	4	42	Cover	1
21	Casing	1	43	M12 Domed Cap Nut	8
22	Oil Indicator R1"	1			