



## 200" GRJ Internal Eccentric Gear Pump



**Performance:**

Flow rate	15 m <sup>3</sup> /h
Pressure	1 - 14 bar
Temperature	0 - 200 °C
Speed	900 d/d
Viscosity	100 - 250000 SSU

**Technical Features:**

- ✓ Internal eccentric gear pump
- ✓ 200" flanged threaded connections
- ✓ Compact design
- ✓ Reliable construction thanks to only two moving parts
- ✓ Various material options
- ✓ Available with external bypass, jacketed and blind cover
- ✓ 230v, three phase 50/60hz motors available
- ✓ Motor, gearbox and belt pulley drive available
- ✓ Manufactured according to CE regulations

**Applications:**

- ✓ Fuel oil, diesel fuel and gas oil transfer
- ✓ Small scale thermal oil applications including Marlotherm, Duratherm, Paratherm, Multitherm, Mobiltherm and Dowtherm
- ✓ Lubrication applications
- ✓ Coolant transfer
- ✓ Any transfer of low to medium viscosity fluids with lubricating properties
- ✓ Not suitable for fluids containing abrasive particles

**Material Options:**

- ✓ Pump casings: Pig cast iron, Spheroidal cast iron, cast steel, AISI 304/316 CrNi Stainless Steel
- ✓ Gears: Spheroidal cast iron, cast steel, AISI 304/316 CrNi Stainless Steel
- ✓ Bearings: Snbz 12 bronze, ball bearing, carbon graphite, silicon carbide, hard metal coated steel
- ✓ Sealing: Soft seal or packing gland, Rotatherm seal, lip seal, mechanical seal, cartridge type mechanical seal

Capacity & Power Table						
Capacity (Q)	Speed (rpm)	Pressure				Viscosity
		3 Bar	6 Bar	9 Bar	12 Bar	
0.6	40	0.55 HP	0.75 HP	0.75 HP	1 HP	75000 SSU
0.8	60	0.55 HP	0.75 HP	1 HP	1 HP	25000 SSU
1.5	100	1 HP	1.5 HP	1.5 HP	2 HP	25000 SSU
3.7	250	1.5 HP	2 HP	3 HP	4 HP	7500 SSU
5	350	2 HP	3 HP	4 HP	5.5 HP	2500 SSU
5.5	450	2 HP	3 HP	4 HP	5.5 HP	750 SSU
13	900	4 HP	5.5 HP	10 HP	10 HP	750 SSU
21	1400	5.5 HP	10	15 HP	15 HP	100 SSU

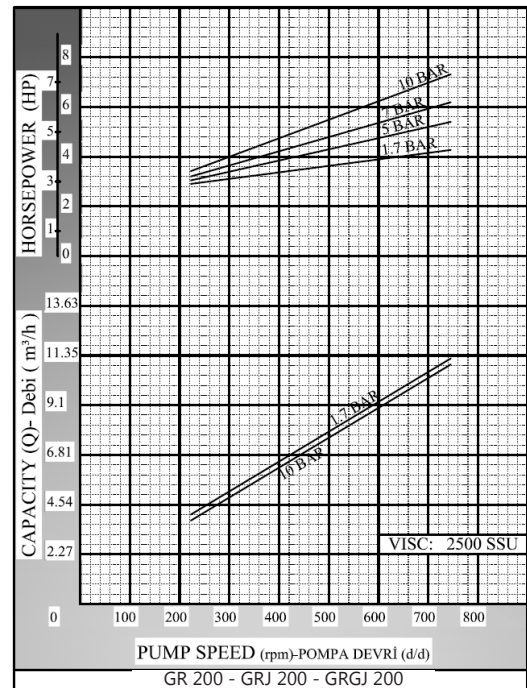
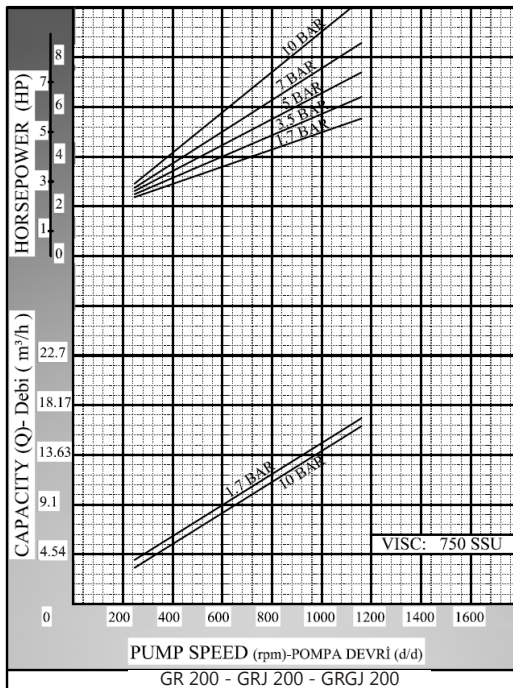
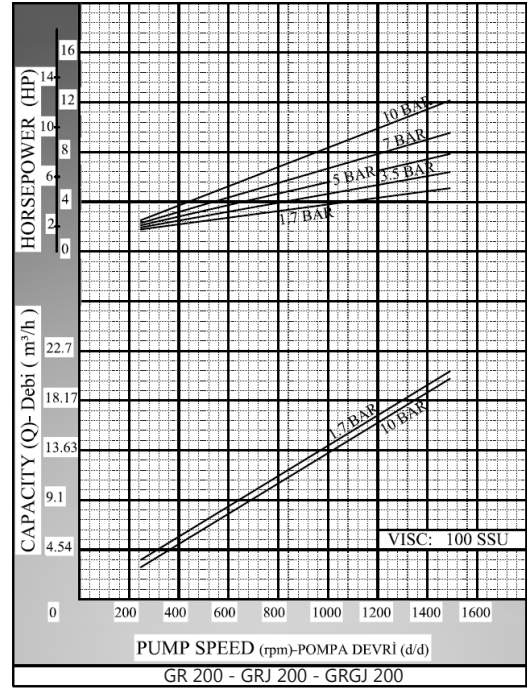
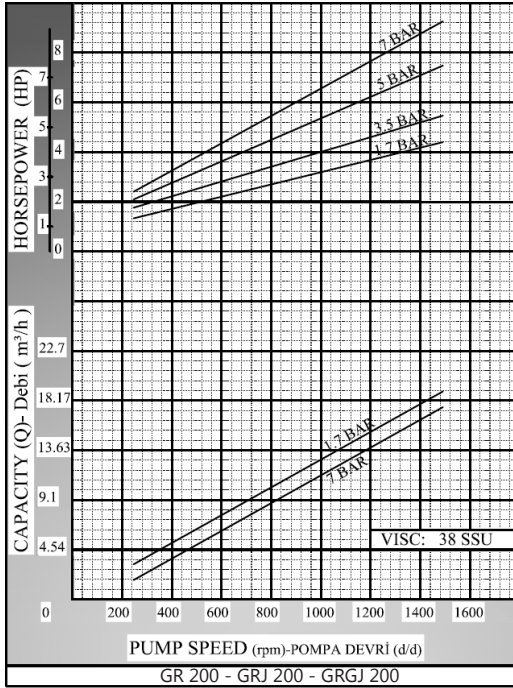
Motor Powers	
5.5 HP	1400 d/d (rpm)
Motor Body	
112	

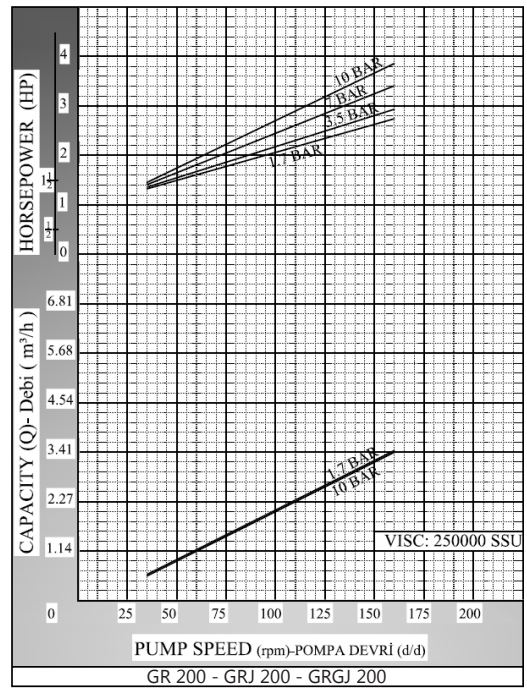
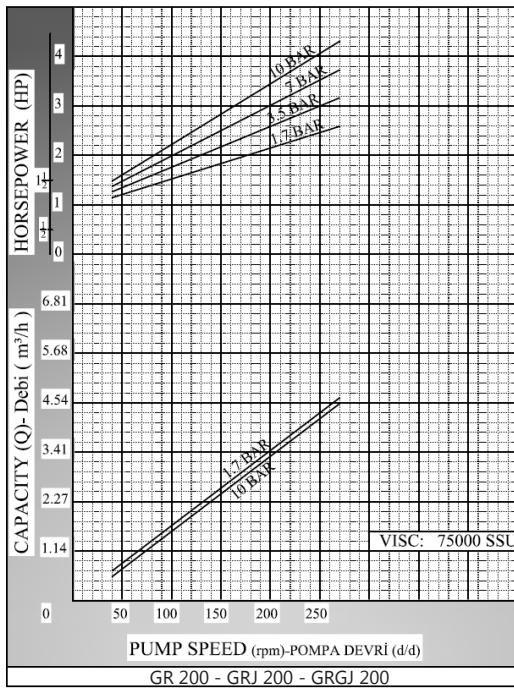
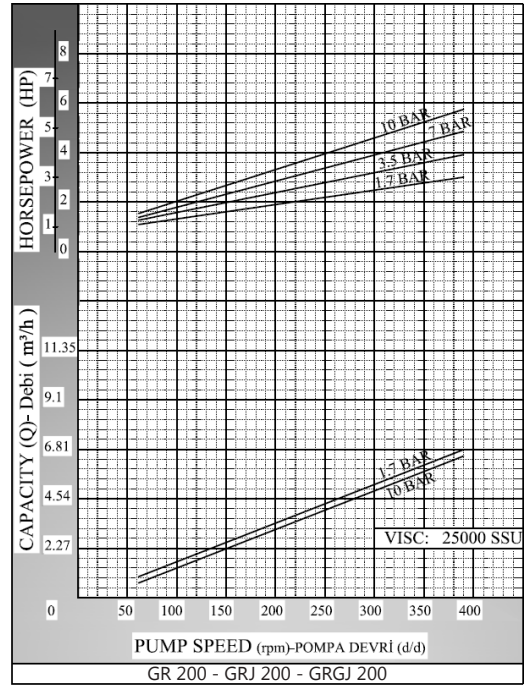
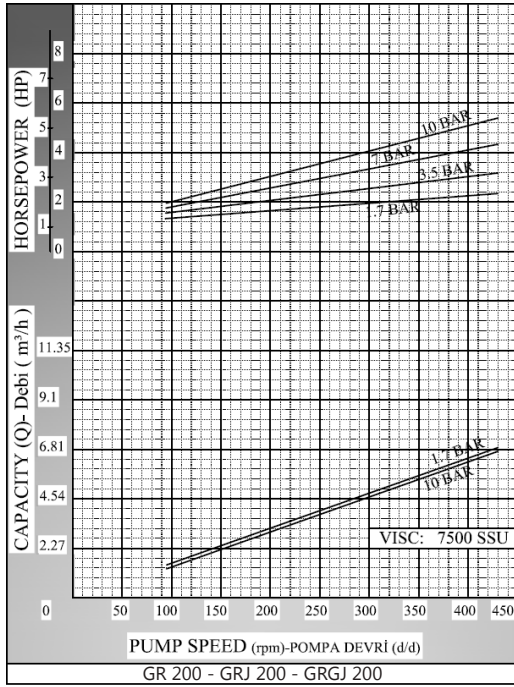
Motor Powers	
4 HP	900 d/d (rpm)
5.5 HP	900 d/d (rpm)
10 HP	1400 d/d (rpm)
15 HP	1400 d/d (rpm)
Motor Body	
132	

Motor Powers	
10 HP	900 d/d (rpm)
Motor Body	
160	

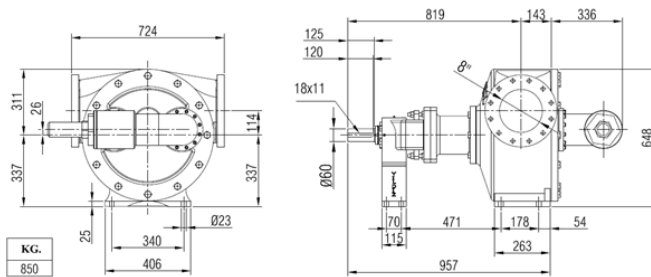


Pump Dimensions - Capacity Graphs:





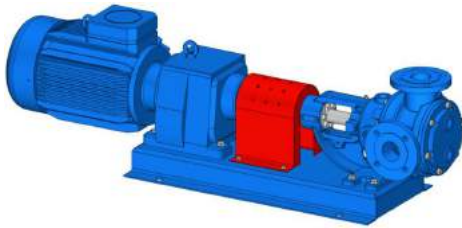
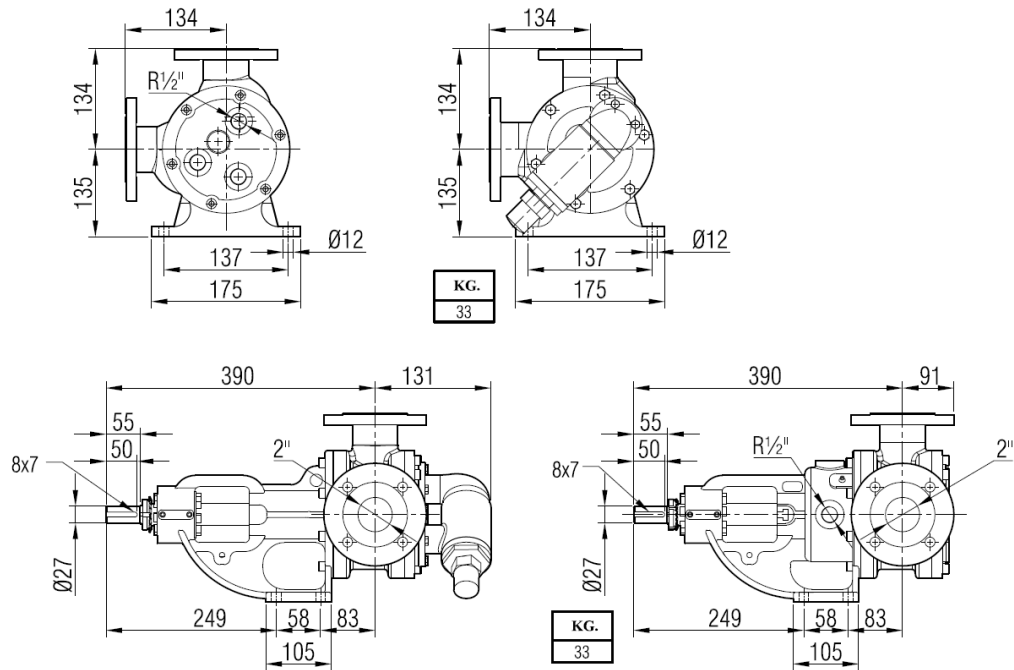
## Pump Dimensions - Bypassed:



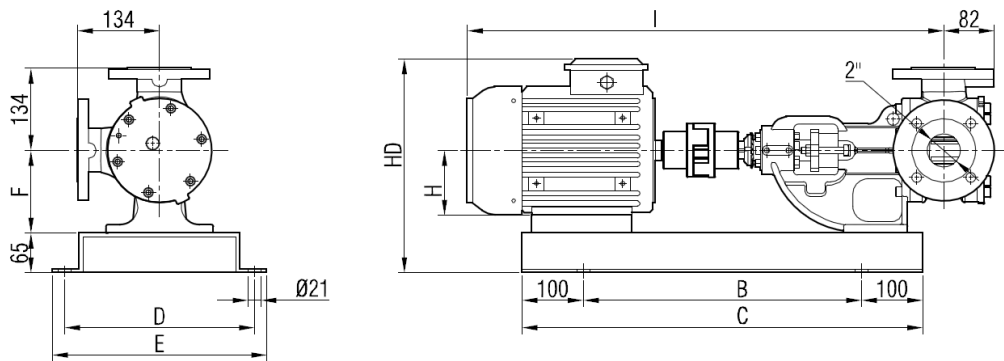




## Pump Dimensions:



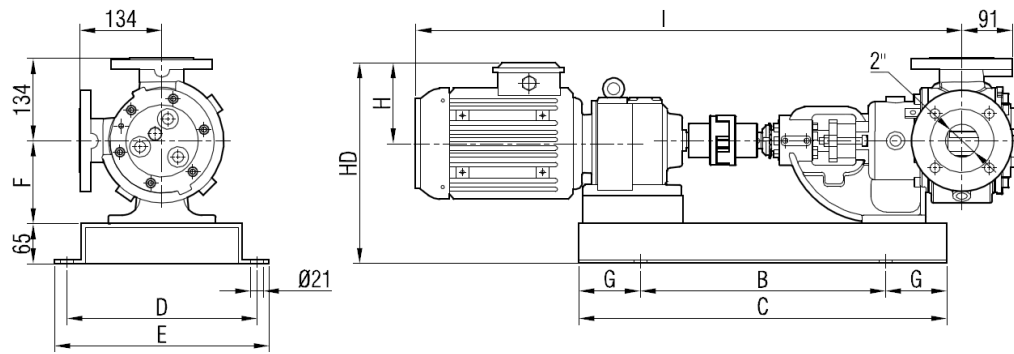
## Coupling Dimensions - Motor drive:



Motor Power & Speed			I	HD	H	B	C	D	E	F	Kg
2 hp / 1.5 kw	750 d/d (rpm)	MOTOR 112M	804	344	112	500	700	310	350	135	83
3 hp / 2.2 kw	900 d/d (rpm)										83
3 hp / 2.2 kw	750 d/d (rpm)	MOTOR 132S	865	367	132	580	780	380	420		92
4 hp / 3 kw	900 d/d (rpm)										93
4 hp / 3 kw	750 d/d (rpm)	MOTOR 132M	903								100
5.5 hp / 4 kw	900 d/d (rpm)										104

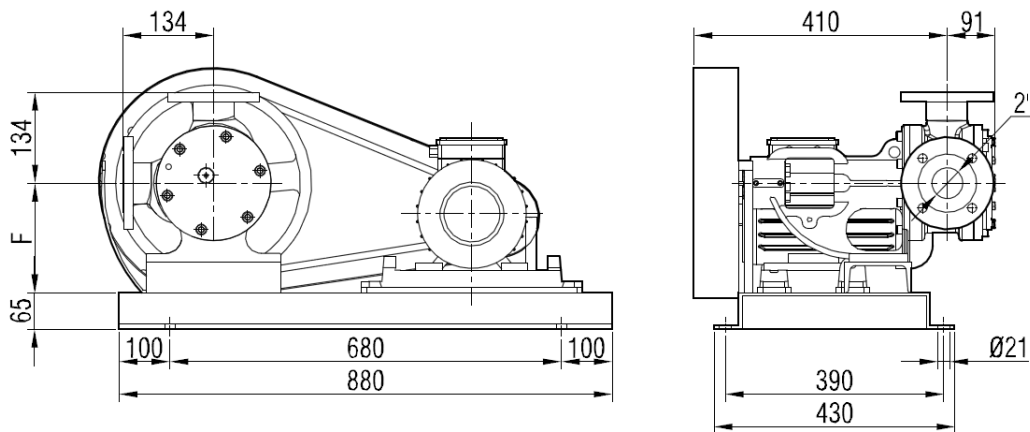


## Coupling Dimensions - Gearbox drive:

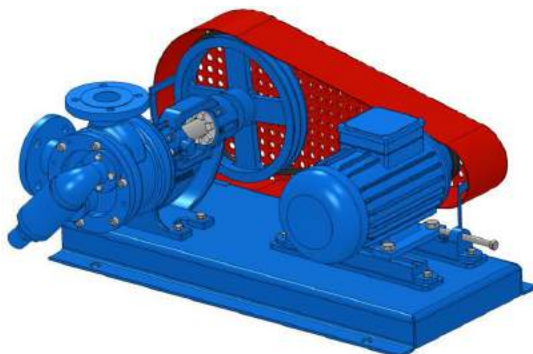


Motor Power & Speed			I	HD	H	B	C	D	E	F	G	Kg
1 hp / 0.75 kw	90/400 d/d (rpm)	IRAM42/80	821	314	118	430	550	260	300	135	60	64
2 hp / 1.5 kw	105/450 d/d (rpm)	IRAM52/90L	901	327	132	420	620	310	350		100	83
4 hp / 1.5 kw	280/600 d/d (rpm)	IRAM52/100L	930	336	141							90
3 hp / 2.2 kw - 4 hp / 3 kw	50/234 - 65/570 d/d (rpm)	IRAM62/100L	994	330	500	700	101					109
5.5 hp / 4 kw	87/570 d/d (rpm)	IRAM62/112M	1015	338			149					111

## Coupling Pump Dimensions - Belt Pulley:

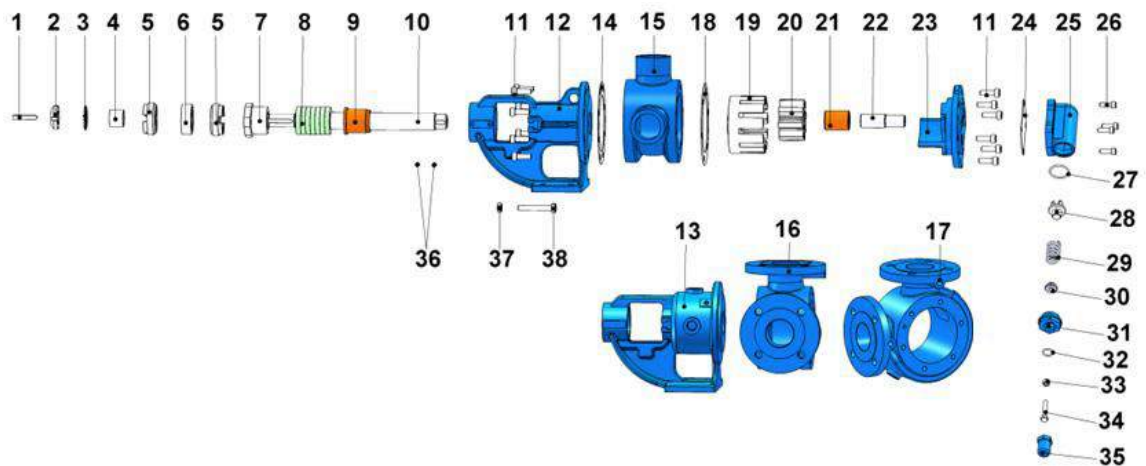


Motor Power & Speed		Pump Speeds				F <sub>(1)</sub>	F <sub>(2)</sub>	F <sub>(3)</sub>	F <sub>(4)</sub>	Kg
		n1 d/d	n2 d/d	n3 d/d	n4 d/d					
3 hp / 2.2 kw	MOTOR 100L	450	400	350	310	135	190	190	245	120
4 hp / 3 kw	MOTOR 100L									130
5.5 hp / 4 kw	MOTOR 112M									135
7.5 hp / 5.5 kw	MOTOR 132S									145
10 hp / 7.5 kw	MOTOR 132M									155



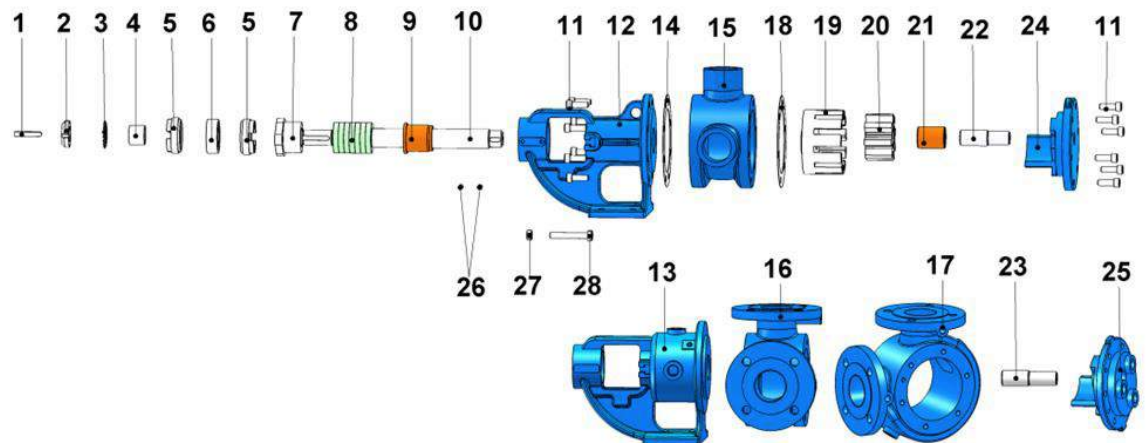


## Spare Parts List - Sealed with soft seal and pressure relief valve on cover:



No.	Part Name.	Qty.	No.	Part Name.	Qty.	No.	Part Name.	Qty.
1	Coupling Key 8x7x50 AB	1	14	Bracket Gasket	1	27	Bypass O-Ring	1
2	Lock Nut	1	15	Casing (90° Threaded Ports)	1	28	Valve	1
3	Lock Washer	1	16	Casing (90° Flanged Ports)	1	29	Spring	1
4	Spacer	1	17	Casing (90° Flanged Ports & w/ Heating Jacket)	1	30	Washer	1
5	Adjusting Nut	2	18	Cover Gasket	1	31	Bypass Cover	1
6	Ball Bearing (2206-2RS)	1	19	Rotor Gear	1	32	Cap O-Ring	1
7	Packing Press	1	20	Idler Gear	1	33	Nut M8	1
8	Soft Seal / Packing Gland	1 TK	21	Idler Bushing	1	34	Adjusting Screw M8x45	1
9	Bracket Bushing	1	22	Bypassed Cover Pin	1	35	Cap	1
10	Shaft	1	23	Cover (w/ Bypass Inlets)	1	36	Grub Screw M8x16	4
11	Inbus Bolt M10x30	14	24	Bypass Gasket	1	37	Nut M10	2
12	Bracket	1	25	Pressure Relief Valve	1	38	Square Screw M10x70	2
13	Bracket (w/ Heating Jacket)	1	26	Inbus Bolt M8x25	4			

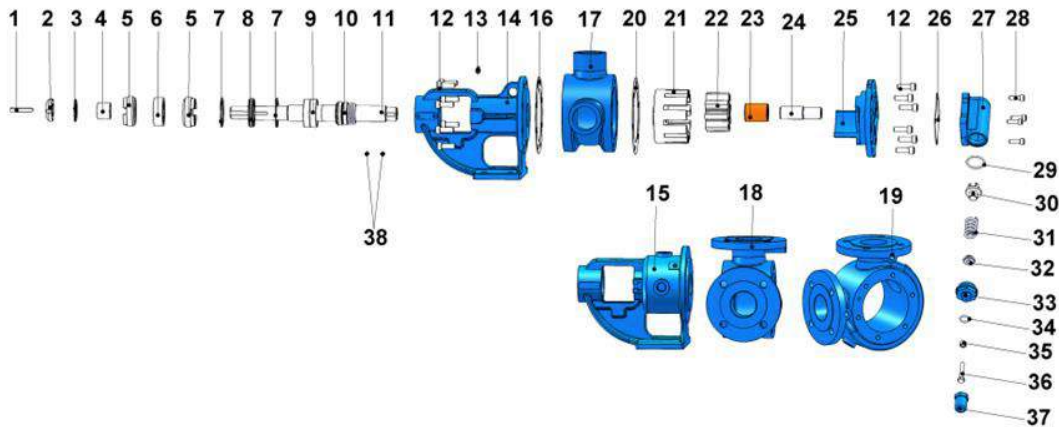
## Spare Parts List - Sealed with soft seal, jacketed and with blind cover:



No.	Part Name.	Qty.	No.	Part Name.	Qty.	No.	Part Name.	Qty.
1	Coupling Key 8x7x50 AB	1	11	Inbus Bolt M10x30	14	21	Idler Bushing	1
2	Lock Nut	1	12	Bracket	1	22	Bypassed Cover Pin	1
3	Lock Washer	1	13	Bracket (w/ Heating Jacket)	1	23	Jacketed Cover Pin	1
4	Spacer	1	14	Bracket Gasket	1	24	Blind Cover	1
5	Adjusting Nut	2	15	Casing (90° Threaded Ports)	1	25	Cover (w/ Heating Jacket)	1
6	Ball Bearing (2206-2RS)	1	16	Casing (90° Flanged Ports)	1	26	Grub Screw M10x16	4
7	Packing Press	1	17	Casing (90° Flanged Ports & w/ Heating Jacket)	1	27	Nut M10	2
8	Soft Seal / Packing Gland	1 TK	18	Cover Gasket	1	28	Square Screw M10x70	2
9	Bracket Bushing	1	19	Rotor Gear	1			
10	Shaft	1	20	Idler Gear	1			

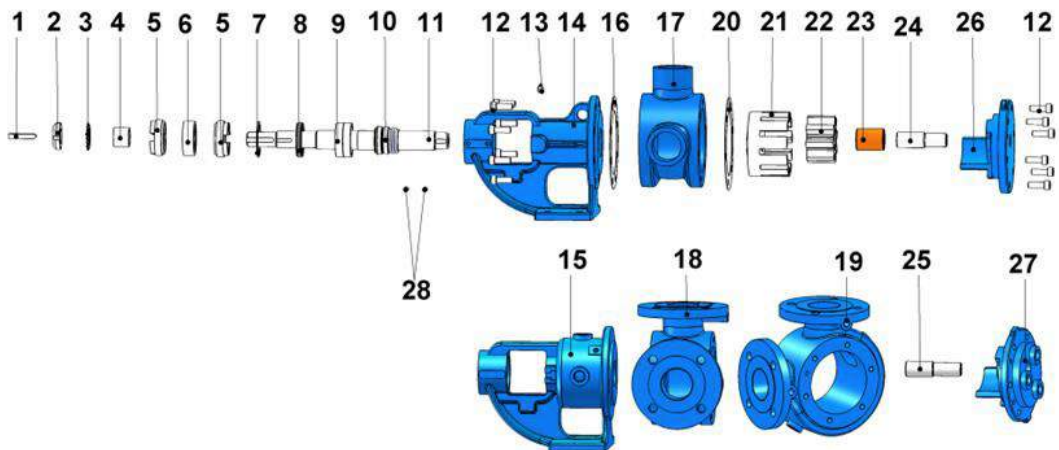


## Spare Parts List - Sealed with mechanical seal, and pressure relief valve on cover:



No.	Part Name.	Qty.	No.	Part Name.	Qty.	No.	Part Name.	Qty.
1	Coupling Key 8x7x50 AB	1	14	Bracket	1	27	Pressure Relief Valve	1
2	Lock Nut	1	15	Bracket (w/ Heating Jacket)	1	28	Inbus Bolt M8x25	4
3	Lock Washer	1	16	Bracket Gasket	1	29	Bypass O-Ring	1
4	Spacer	1	17	Casing (90° Threaded Ports)	1	30	Valve	1
5	Adjusting Nut	2	18	Casing (90° Flanged Ports)	1	31	Spring	1
6	Ball Bearing (2206-2RS)	1	19	Casing (90° Flanged Ports & w/ Heating Jacket)	1	32	Washer	1
7	Internal Circlip (ø62)	2	20	Cover Gasket	1	33	Bypass Cover	1
8	Lip Seal ø35xø62x10	1	21	Rotor Gear	1	34	Cap O-Ring	1
9	Ball Bearing (6007)	2	22	Idler Gear	1	35	Nut M8	1
10	Mechanical Seal Ø35	1	23	Idler Bushing	1	36	Adjusting Screw M8x45	1
11	Shaft	1	24	Bypassed Cover Pin	1	37	Cap	1
12	Inbus Bolt M10x30	14	25	Cover (w/ Bypass Inlets)	1	38	Grub Screw M10x16	4
13	Greasing Fitting R3/8"	1	26	Bypass Gasket	1			

## Spare Parts List - Sealed with mechanical seal, jacketed and with blind cover:

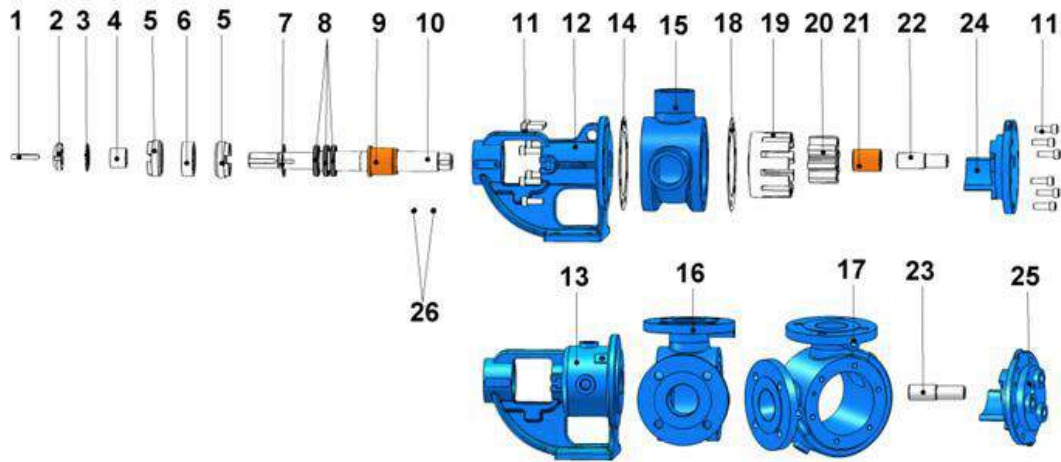


No.	Part Name.	Qty.	No.	Part Name.	Qty.	No.	Part Name.	Qty.
1	Coupling Key 8x7x50 AB	1	11	Shaft	1	21	Rotor Gear	1
2	Lock Nut	1	12	Inbus Bolt M10x30	14	22	Idler Gear	1
3	Lock Washer	1	13	Greasing Fitting R3/8"	1	23	Idler Bushing	1
4	Spacer	1	14	Bracket	1	24	Bypassed Cover Pin	1
5	Adjusting Nut	2	15	Bracket (w/ Heating Jacket)	1	25	Jacketed Cover Pin	1
6	Ball Bearing (2206-2RS)	1	16	Bracket Gasket	1	26	Blind Cover	1
7	Internal Circlip (ø62)	2	17	Casing (90° Threaded Ports)	1	27	Cover (w/ Heating Jacket)	4
8	Lip Seal ø35xø62x10	1	18	Casing (90° Flanged Ports)	1	28	Grub Screw M10x16	1
9	Ball Bearing (6007)	2	19	Casing (90° Flanged Ports & w/ Heating Jacket)	1			
10	Mechanical Seal Ø35	1	20	Cover Gasket	1			





## Spare Parts List - Sealed with lip seal, jacketed and with blind cover:



No.	Part Name.	Qty.	No.	Part Name.	Qty.	No.	Part Name.	Qty.
1	Coupling Key 8x7x50 AB	1	11	Inbus Bolt M10x30	14	21	Idler Bushing	1
2	Lock Nut	1	12	Bracket	1	22	Cover Pin	1
3	Lock Washer	1	13	Bracket (w/ Heating Jacket)	1	23	Jacketed Cover Pin	1
4	Spacer	1	14	Bracket Gasket	1	24	Blind Cover	1
5	Adjusting Nut	2	15	Casing (90° Threaded Ports)	1	25	Cover (w/ Heating Jacket)	1
6	Ball Bearing (2206-2RS)	1	16	Casing (90° Flanged Ports)	1	26	Grub Screw M8x16	4
7	Internal Circlip (ø56)	1	17	Casing (90° Flanged Ports & w/ Heating Jacket)	1			
8	Lip Seal ø35xø62x10	3	18	Cover Gasket	1			
9	Bracket Bushing	1	19	Rotor Gear	1			
10	Shaft	1	20	Idler Gear	1			