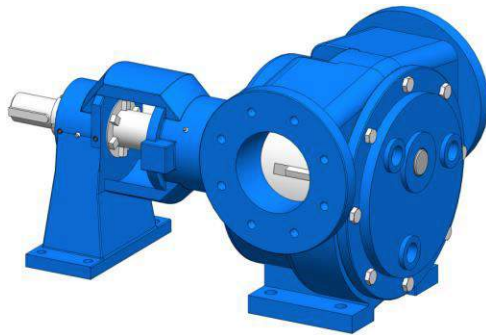




6" GRJ Internal Eccentric Gear Pump



Performance:

Flow rate	135 m ³ /h
Pressure	1 - 10 bar
Temperature	0 - 200 °C
Speed	350 d/d
Viscosity	100 - 250000 SSU

Technical Features:

- ✓ Internal eccentric gear pump
- ✓ 6" flanged threaded connections
- ✓ Compact design
- ✓ Reliable construction thanks to only two moving parts
- ✓ Various material options
- ✓ Available with external bypass, jacketed and blind cover
- ✓ 230v, three phase 50/60hz motors available
- ✓ Gearbox drive
- ✓ Manufactured according to CE regulations

Applications:

- ✓ Fuel oil, diesel fuel and gas oil transfer
- ✓ Small scale thermal oil applications including Marlotherm, Duratherm, Paratherm, Multitherm, Mobiltherm and Dowtherm
- ✓ Lubrication applications
- ✓ Coolant transfer
- ✓ Any transfer of low to medium viscosity fluids with lubricating properties
- ✓ Not suitable for fluids containing abrasive particles

Material Options:

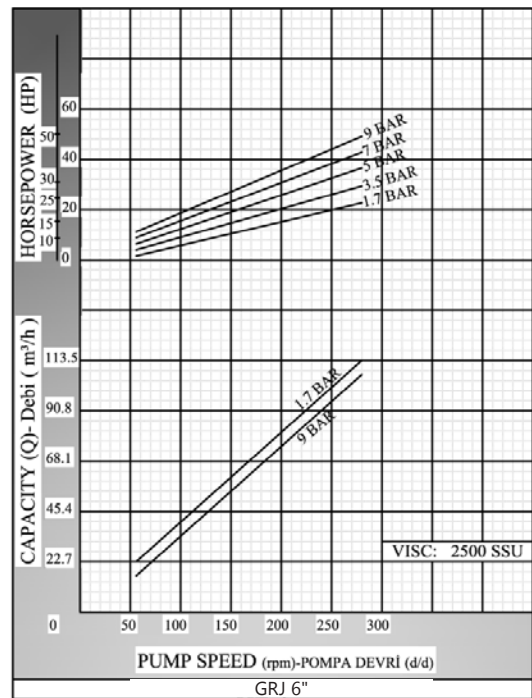
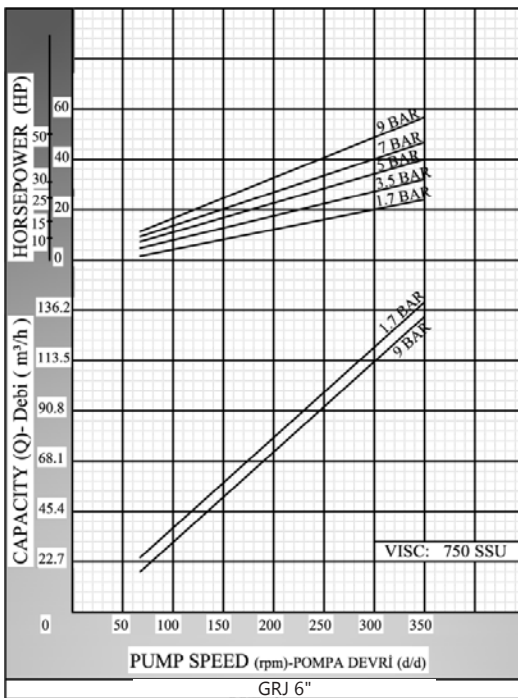
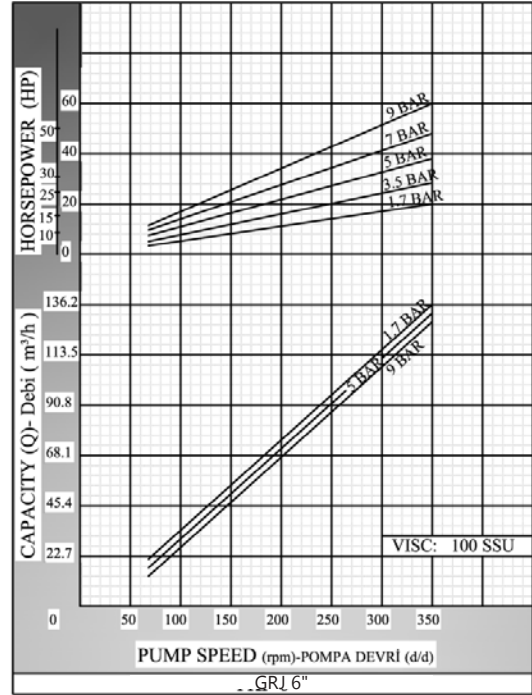
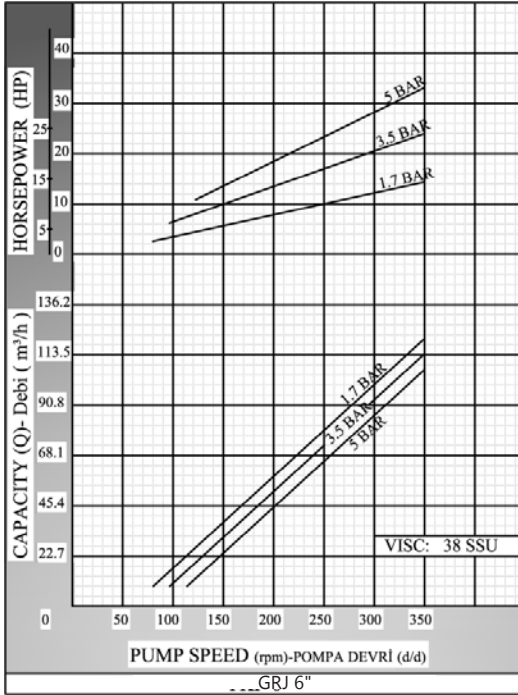
- ✓ Pump casings: Pig cast iron, Spheroidal cast iron, cast steel, AISI 304/316 CrNi Stainless Steel
- ✓ Gears: Spheroidal cast iron, cast steel, AISI 304/316 CrNi Stainless Steel
- ✓ Bearings: Snbz 12 bronze, ball bearing, carbon graphite, silicon carbide, hard metal coated steel
- ✓ Sealing: Soft seal or packing gland, Rotatherm seal, lip seal, mechanical seal, cartridge type mechanical seal

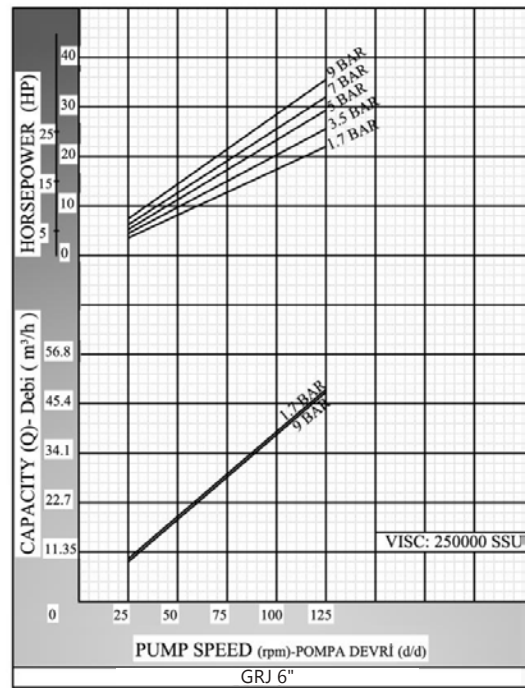
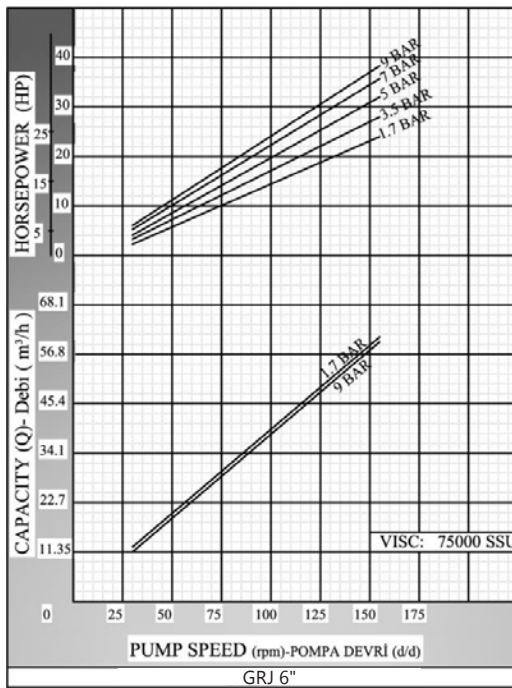
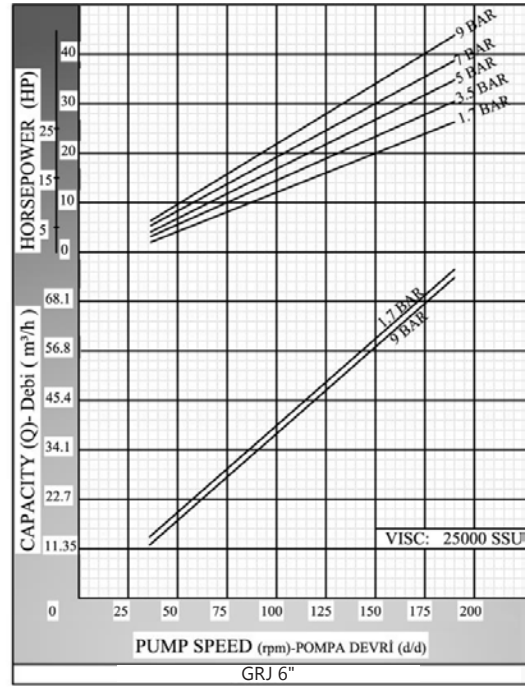
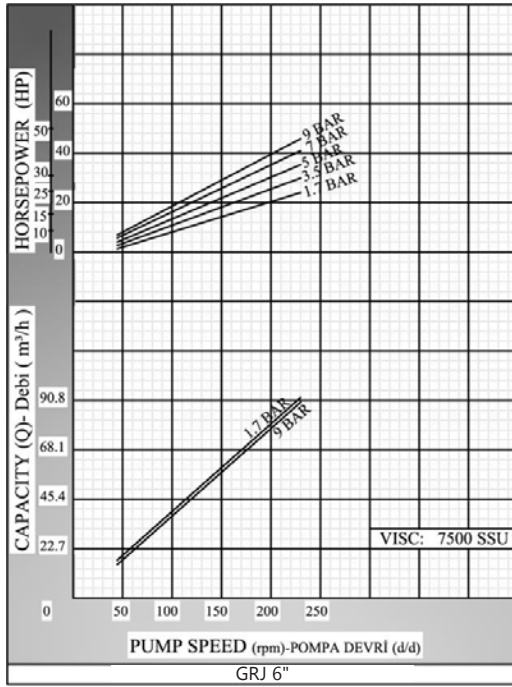


Capacity & Power Table						
Capacity (Q)	Speed (rpm)	Pressure				Viscosity
		3 Bar	5 Bar	7 Bar	9 Bar	
46	125	25 HP	30 HP	40 HP	40 HP	250000 SSU
58	150	30 HP	40 HP	40 HP	40 HP	75000 SSU
68	175	30 HP	40 HP	40 HP	50 HP	25000 SSU
90	225	30 HP	40 HP	50 HP	50 HP	7500 SSU

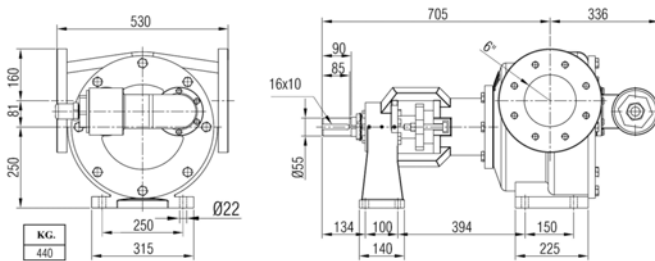


Pump Dimensions - Capacity Graphs:



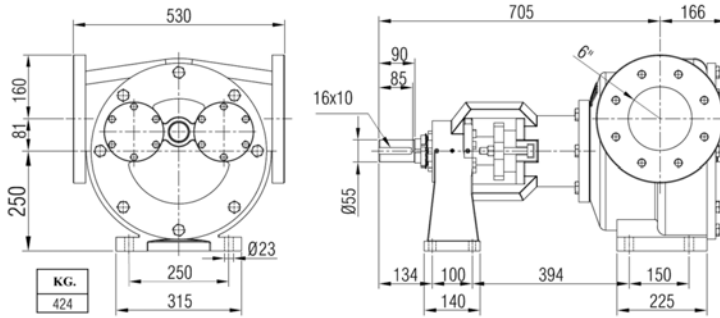


Pump Dimensions - Bypassed:

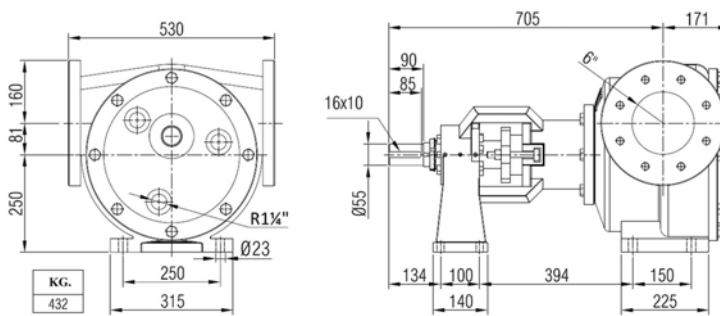




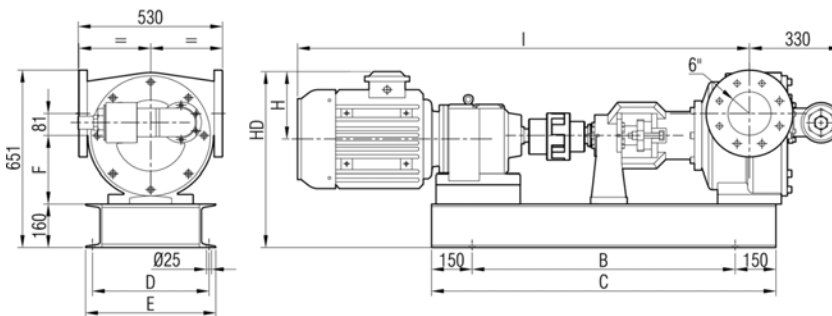
Pump Dimensions - Blind covered:



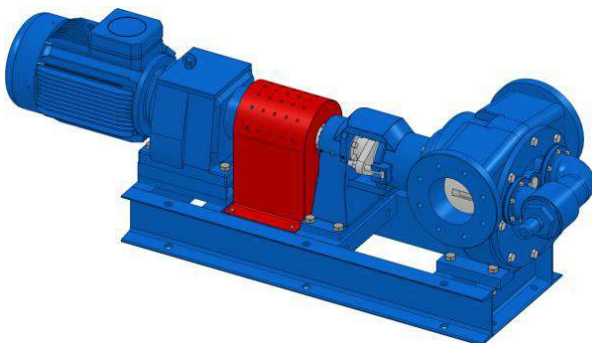
Pump Dimensions - with jacket:

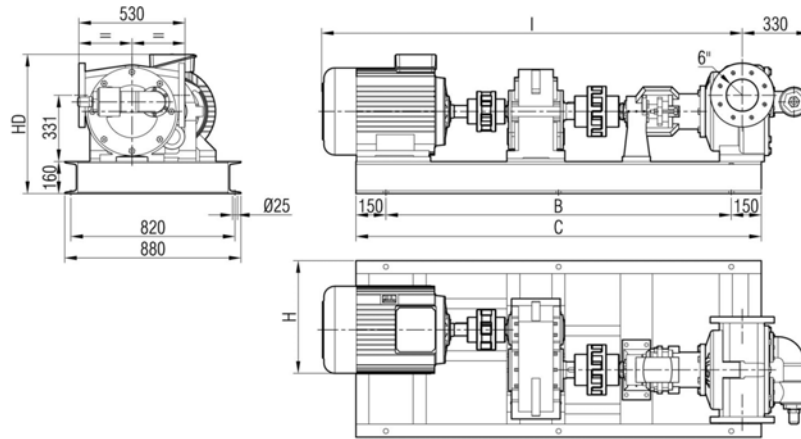


Pump Dimensions - Gearbox drive:

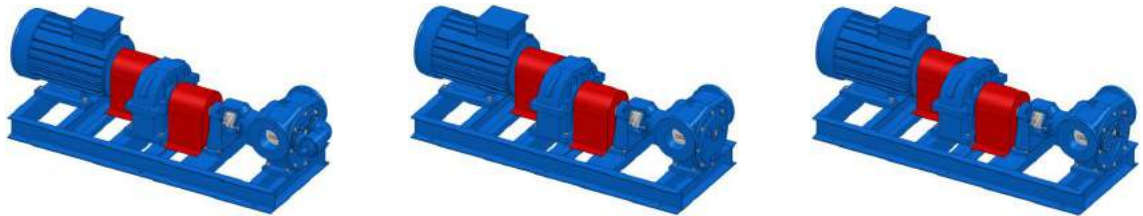


Motor Power & Speed			I	HD	H	B	C	D	E	F	Kg
25 hp / 18.5 kw	145/350 d/d (rpm)	IRAM82/180M	1679	646	248	970	1270	430	490	250	700
30 hp / 22 kw	105/350 d/d (rpm)	IRAM92/180L	1796	637		1050	1350				810
40 hp / 30 kw	204/350 d/d (rpm)	IRAM92/200L	1835	664	275	1130	1430	520	580		850
50 hp / 37 kw	89/350 d/d (rpm)	IRAM102/225S	1926	674	285						1106
60 hp / 45 kw	113/350 d/d (rpm)	IRAM102/225M	1950								

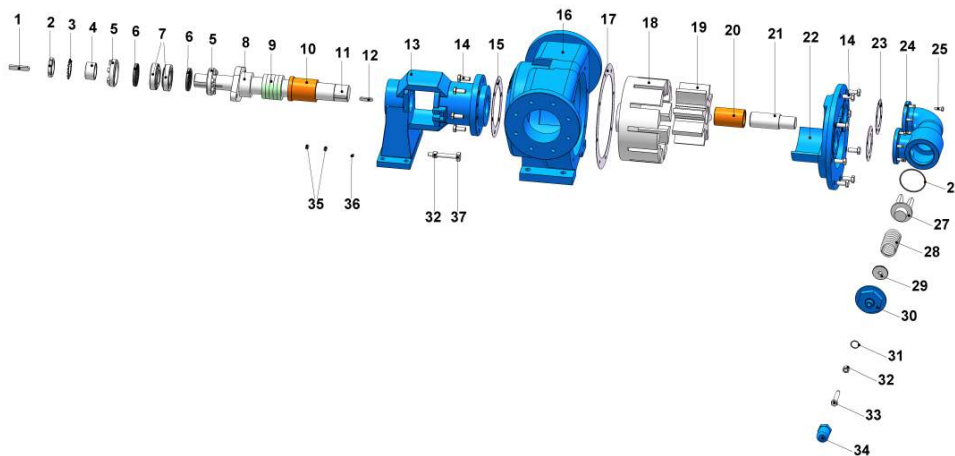




Motor Power & Speed		I	HD	H	B	C	Kg
50 hp / 37 kw	A200-P9 / 225S	2096	694	561	1725	2025	1135
60 hp / 45 kw	A200-P9 / 225M						1159
75 hp / 55 kw	A200-P9 / 250M	2196	731	596	1785	2085	1265



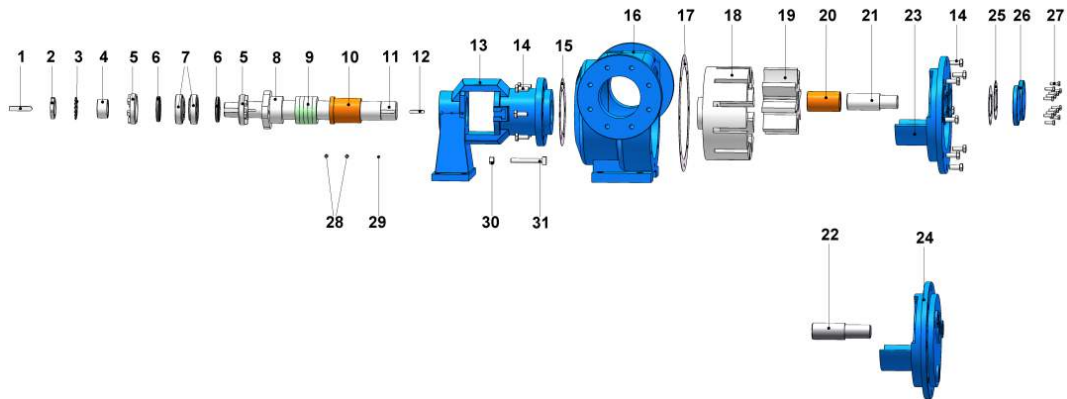
Spare Parts List - Sealed with soft seal, and bypassed with pressure relief valve:



No.	Part Name.	Qty.	No.	Part Name.	Qty.	No.	Part Name.	Qty.
1	Coupling Key 16x10x85 AB	1	14	Hex Bolt M16x40	14	27	Valve	1
2	Lock Nut	1	15	Bracket Gasket	1	28	Spring	1
3	Lock Washer	1	16	Casing	1	29	Washer	1
4	Spacer	1	17	Bracket Gasket	1	30	Bypass Cover	1
5	(Adjusting Nut)	2	18	Rotor Gear	1	31	Cap O-Ring	1
6	Lip Seal ø70xø95x10	2	19	Idler Gear	1	32	Nut M16	3
7	Ball Bearing (32212)	2	20	Idler Bushing	1	33	Adjusting Screw M16x90	1
8	Packing Press	1	21	Cover Pin	1	34	Cap	1
9	Soft Seal / Packing Gland	1 TK	22	Cover	1	35	Grub Screw M12x20	4
10	Bracket Bushing	1	23	Bypass Gasket	2	36	Greasing Fitting R3/8"	1
11	Shaft	1	24	Pressure Relief Valve - Bypass	1	37	Square Screw M16x120	2
12	Rotor Key 12x8x55 A	1	25	Hex Bolt M10x30	12			
13	Bracket	1	26	Bypass O-Ring	1			

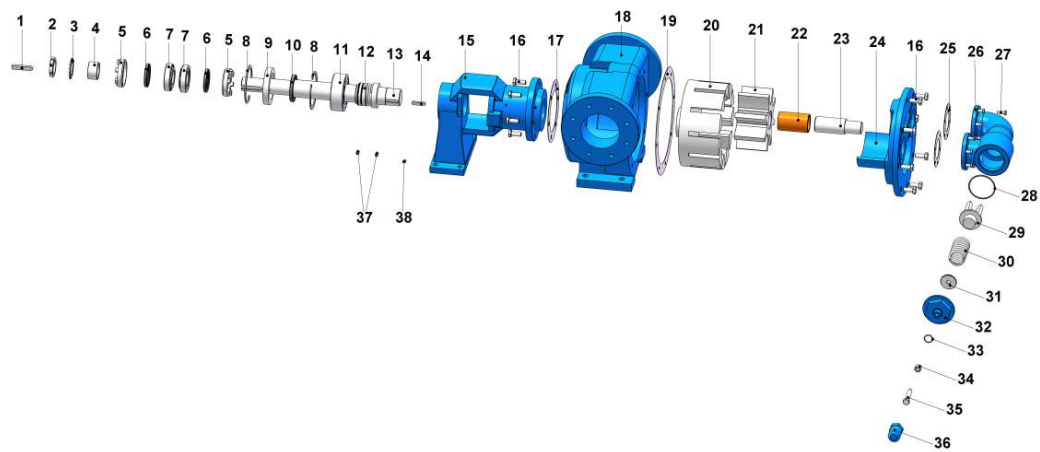


Spare Parts List - Sealed with soft seal, jacketed, and with blind cover:



No.	Part Name.	Qty.	No.	Part Name.	Qty.	No.	Part Name.	Qty.
1	Coupling Key 16x10x85 AB	1	12	Rotor Key 12x8x55 A	1	23	Cover	1
2	Lock Nut	1	13	Bracket	1	24	Jacketed Cover	1
3	Lock Washer	1	14	Hex Bolt M16x40	14	25	Bypass Gasket	2
4	Spacer	1	15	Bracket Gasket	1	26	Bypass Inlets Cover	2
5	Adjusting Nut	2	16	Casing	1	27	Hex Bolt M10x30	12
6	Lip Seal $\varnothing 70 \times \varnothing 95 \times 10$	2	17	Bracket Gasket	1	28	Grub Screw M12x20	4
7	Ball Bearing (32212)	2	18	Rotor Gear	1	29	Greasing Fitting R3/8"	1
8	Packing Press	1	19	Idler Gear	1	30	Nut M16	2
9	Soft Seal / Packing Gland	1 TK	20	Idler Bushing	1	31	Square Screw M16x120	2
10	Bracket Bushing	1	21	Cover Pin	1			
11	Shaft	1	22	Jacketed Cover Pin	1			

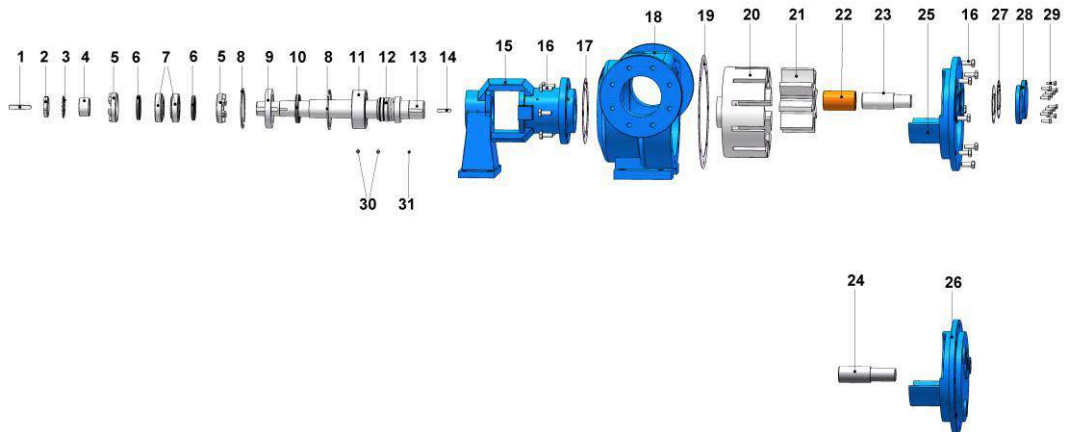
Spare Parts List - Sealed with mechanical seal, and bypassed with pressure relief valve:



No.	Part Name.	Qty.	No.	Part Name.	Qty.	No.	Part Name.	Qty.
1	Coupling Key 16x10x85 AB	1	14	Rotor Key 12x8x55 A	14	27	Hex Bolt M10x30	1
2	Lock Nut	1	15	Bracket	1	28	Bypass O-Ring	1
3	Lock Washer	1	16	Hex Bolt M16x40	1	29	Valve	1
4	Spacer	2	17	Bracket Gasket	1	30	Spring	1
5	Adjusting Nut	1	18	Casing	1	31	Washer	1
6	Lip Seal $\varnothing 70 \times \varnothing 95 \times 10$	2	19	Bracket Gasket	1	32	Bypass Cover	3
7	Ball Bearing (32212)	2	20	Rotor Gear	1	33	Cap O-Ring	1
8	Internal Circlip ($\varnothing 150$)	1	21	Idler Gear	1	34	Nut M16	1
9	Bushing For Mechanical Seal	1	22	Idler Bushing	1	35	Adjusting Screw M16x90	4
10	Lip Seal $\varnothing 70 \times \varnothing 110 \times 13$	1	23	Cover Pin	2	36	Cap	1
11	Ball Bearing (2314)	1	24	Cover	1	37	Grub Screw M12x20	2
12	Mechanical Seal $\varnothing 70$	1	25	Bypass Gasket	12	38	Greasing Fitting R3/8"	
13	Shaft	1	26	Pressure Relief Valve - Bypass	1			



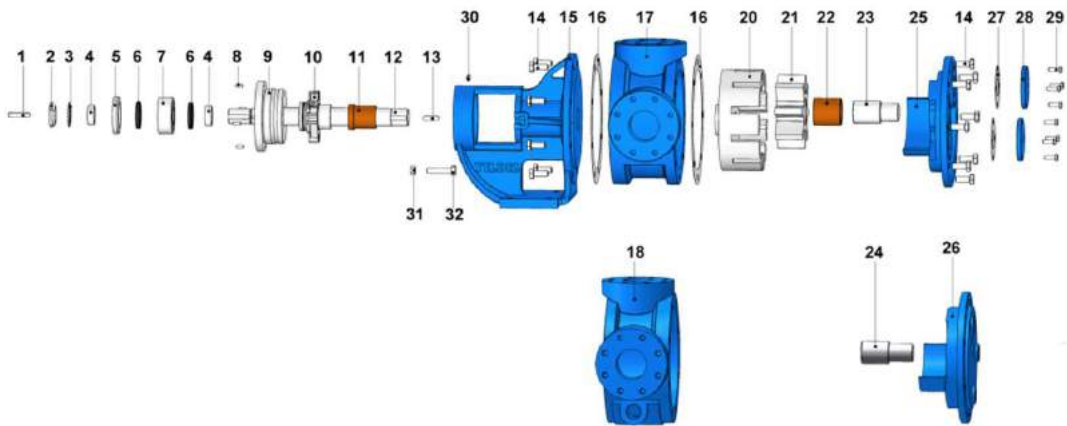
Spare Parts List - Sealed with mechanical seal, jacketed and with blind cover:



No.	Part Name.	Qty.	No.	Part Name.	Qty.	No.	Part Name.	Qty.
1	Coupling Key 16x10x85 AB	1	12	Mechanical Seal Ø70	1	23	Cover Pin	1
2	Lock Nut	1	13	Shaft	1	24	Cover Pin (For Jacket)	1
3	Lock Washer	1	14	Rotor Key 12x8x55 A	14	25	Cover	2
4	Spacer	2	15	Bracket	1	26	Jacketed Cover	2
5	Adjusting Nut	1	16	Hex Bolt M16x40	1	27	Bypass Gasket	12
6	Lip Seal ø70xø95x10	2	17	Bracket Gasket	1	28	Bypass Inlets Cover	4
7	Ball Bearing (32212)	2	18	Casing	1	29	Hex Bolt M10x30	1
8	Internal Circlip (ø150)	1	19	Bracket Gasket	1	30	Grub Screw M12x20	2
9	Bushing For Mechanical Seal	1	20	Rotor Gear	1	31	Greasing Fitting R3/8"	2
10	Lip Seal ø70xø110x13	1	21	Idler Gear	1			
11	Ball Bearing (2314)	1	22	Idler Bushing	1			



Spare Parts List - Sealed with cartex mechanical seal, jacketed and with blind cover:



No.	Part Name.	Qty.	No.	Part Name.	Qty.	No.	Part Name.	Qty.
1	Coupling Key 12x8x60 AB	1	12	Shaft	1	23	Cover Pin	1
2	Lock Nut	1	13	Rotor Key 12x8x45 A	1	24	Jacketed Cover Pin	1
3	Lock Washer	1	14	Hex Bolt M16x40	16	25	Cover	1
4	Spacer	2	15	Bracket (w/ Cartex Mech. Seal)	1	26	Jacketed Cover	1
5	Pulley Cover	1	16	Bracket & Cover Gasket	2	27	Bypass Gasket	2
6	Lip Seal $\phi 55 \times \phi 72 \times 10$	2	17	Casing (w/ 90° Flanged Ports)	1	28	Bypass Inlets Cover	2
7	Ball Bearing (3209)	1	18	Casing (w/ 90° Flanged Ports & w/ Heating Jacket)	1	29	Hex Bolt M10x30	8
8	Grub Screw M8x20	4	19	—————	30	Greasing Fitting R3/8"	1	
9	Pulley	1	20	Rotor Gear	1	31	Nut M14	2
10	Cartex Mechanical Seal $\phi 50$	1	21	Idler Gear	1	32	Square Screw M14x90	2
11	Bracket Bushing	1	22	Idler Bushing	1			