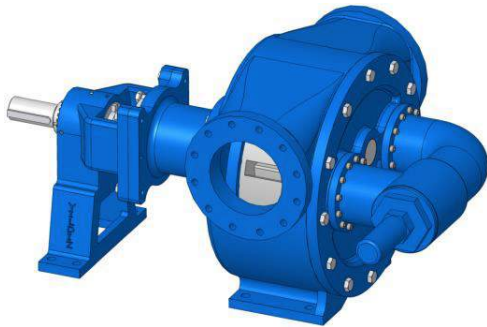




8" GRJ Internal Eccentric Gear Pump



Performance:

Flow rate	200 m ³ /h
Pressure	1 - 10 bar
Temperature	0 - 200 °C
Speed	220 d/d
Viscosity	100 - 250000 SSU

Technical Features:

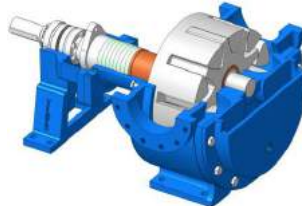
- ✓ Internal eccentric gear pump
- ✓ 8" flanged threaded connections
- ✓ Compact design
- ✓ Reliable construction thanks to only two moving parts
- ✓ Various material options
- ✓ Available with external bypass, jacketed and blind cover
- ✓ 230v, three phase 50/60hz motors available
- ✓ Gearbox drive
- ✓ Manufactured according to CE regulations

Applications:

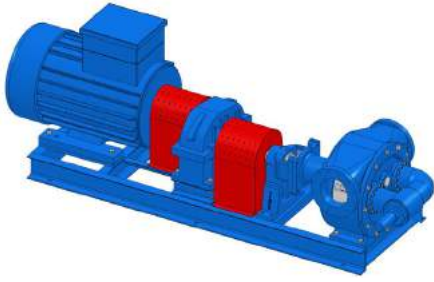
- ✓ Fuel oil, diesel fuel and gas oil transfer
- ✓ Small scale thermal oil applications including Marlotherm, Duratherm, Paratherm, Multitherm, Mobiltherm and Dowtherm
- ✓ Lubrication applications
- ✓ Coolant transfer
- ✓ Any transfer of low to medium viscosity fluids with lubricating properties
- ✓ Not suitable for fluids containing abrasive particles

Material Options:

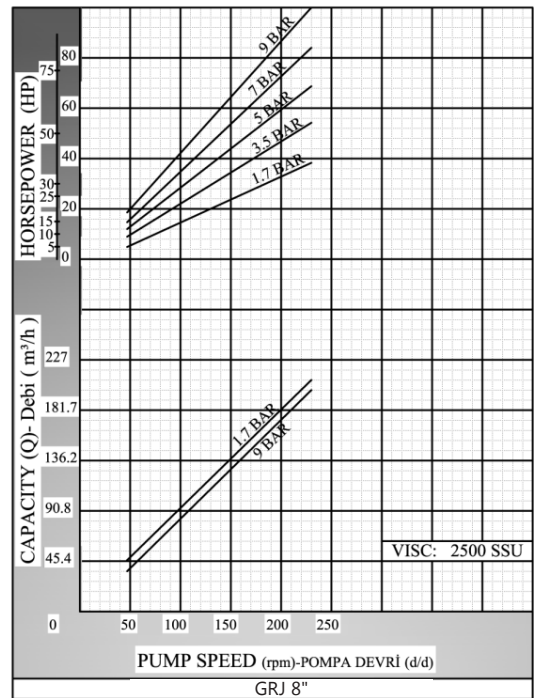
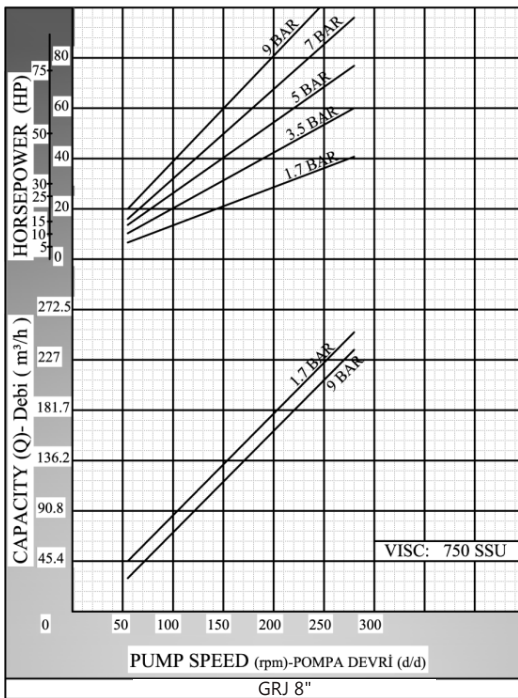
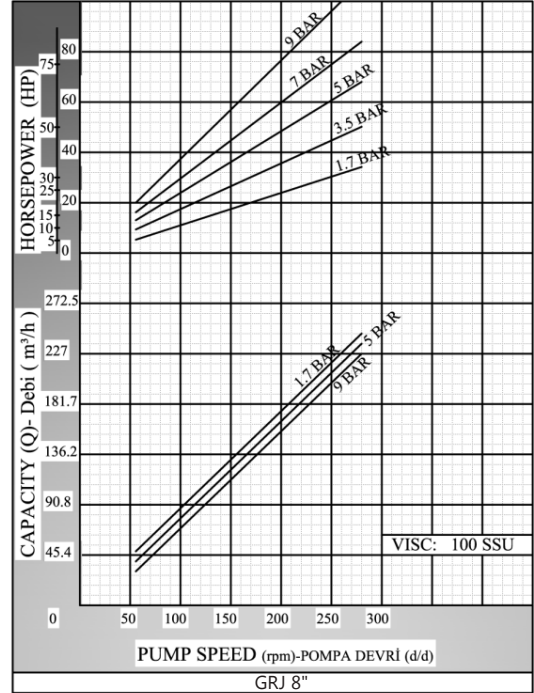
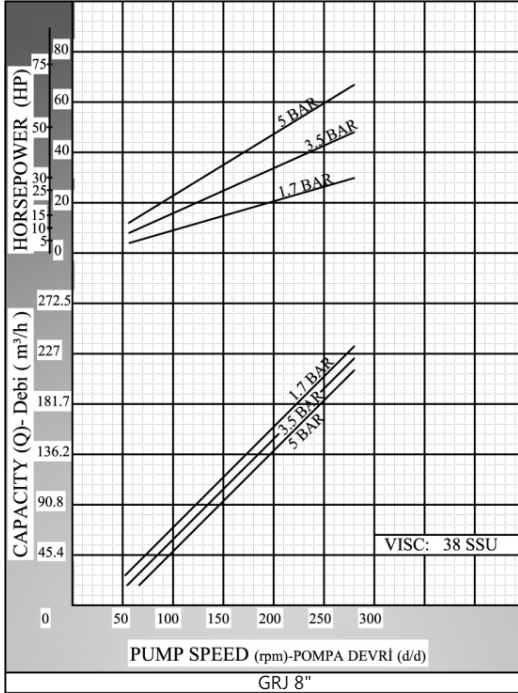
- ✓ Pump casings: Pig cast iron, Spheroidal cast iron, cast steel, AISI 304/316 CrNi Stainless Steel
- ✓ Gears: Spheroidal cast iron, cast steel, AISI 304/316 CrNi Stainless Steel
- ✓ Bearings: Snbz 12 bronze, ball bearing, carbon graphite, silicon carbide, hard metal coated steel
- ✓ Sealing: Soft seal or packing gland, Rotatherm seal, lip seal, mechanical seal, cartridge type mechanical seal

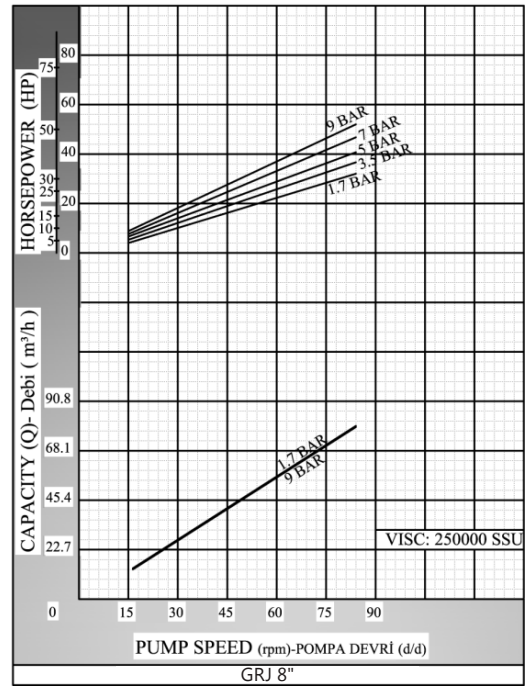
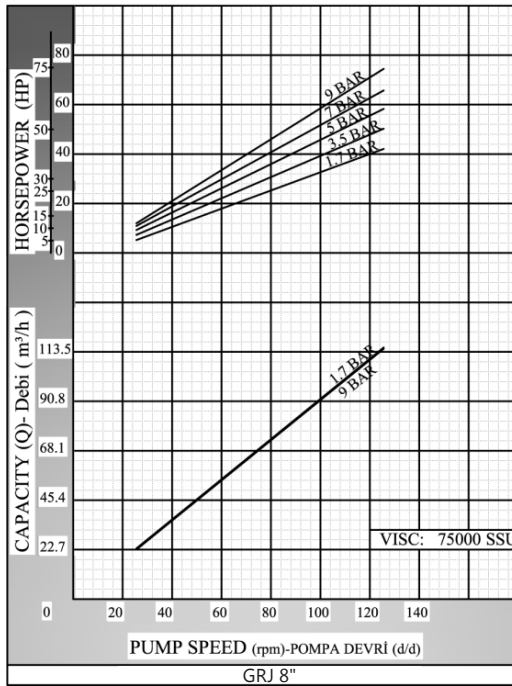
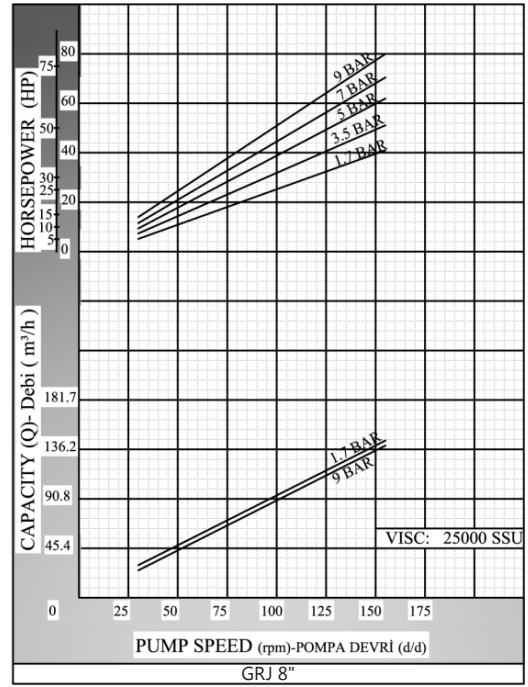
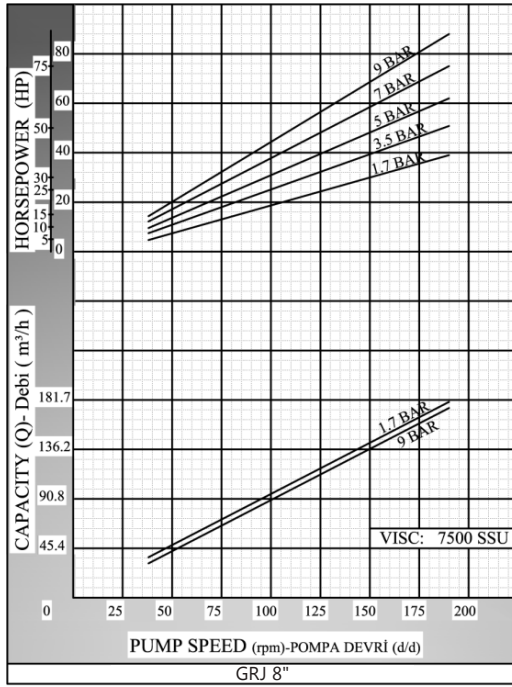


Capacity & Power Table						
Capacity (Q)	Speed (rpm)	Pressure				Viscosity
		3 Bar	5 Bar	7 Bar	9 Bar	
80	84	40 HP	50 HP	50 HP	60 HP	250000 SSU
114	125	50 HP	60 HP	75 HP	75 HP	75000 SSU
140	155	50 HP	75 HP	75 HP	100 HP	25000 SSU
174	190	60 HP	75 HP	75 HP	100 HP	7500 SSU

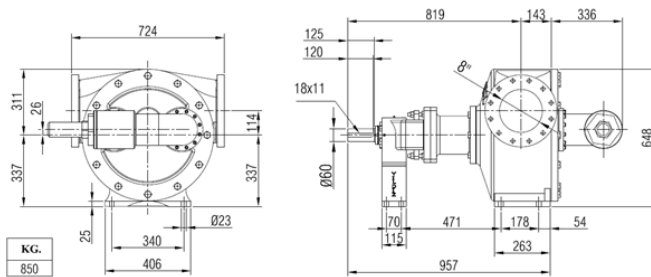


Pump Dimensions - Capacity Graphs:



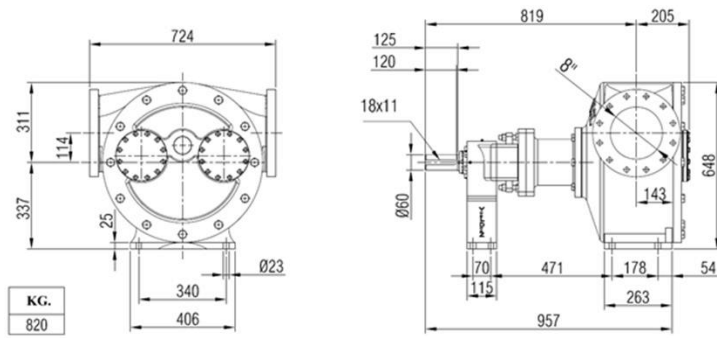


Pump Dimensions - Bypassed:

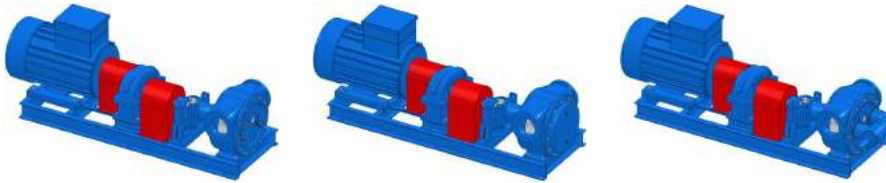
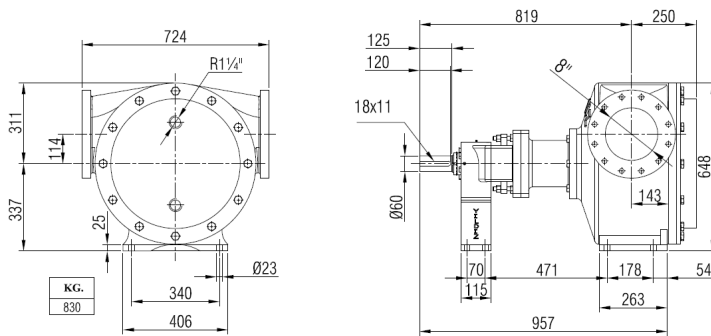




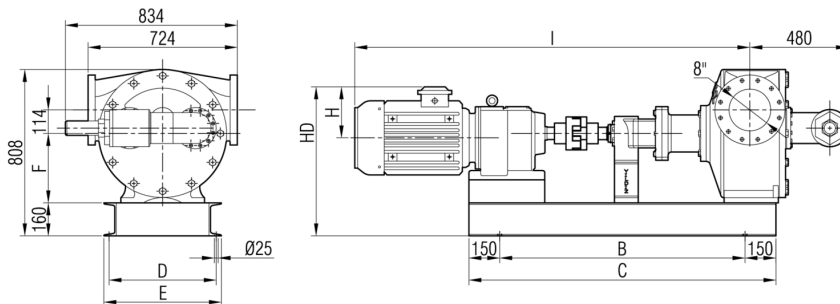
Pump Dimensions - Blind covered:



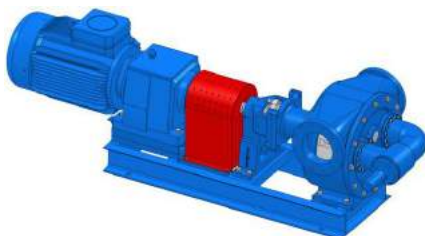
Pump Dimensions - with jacket:

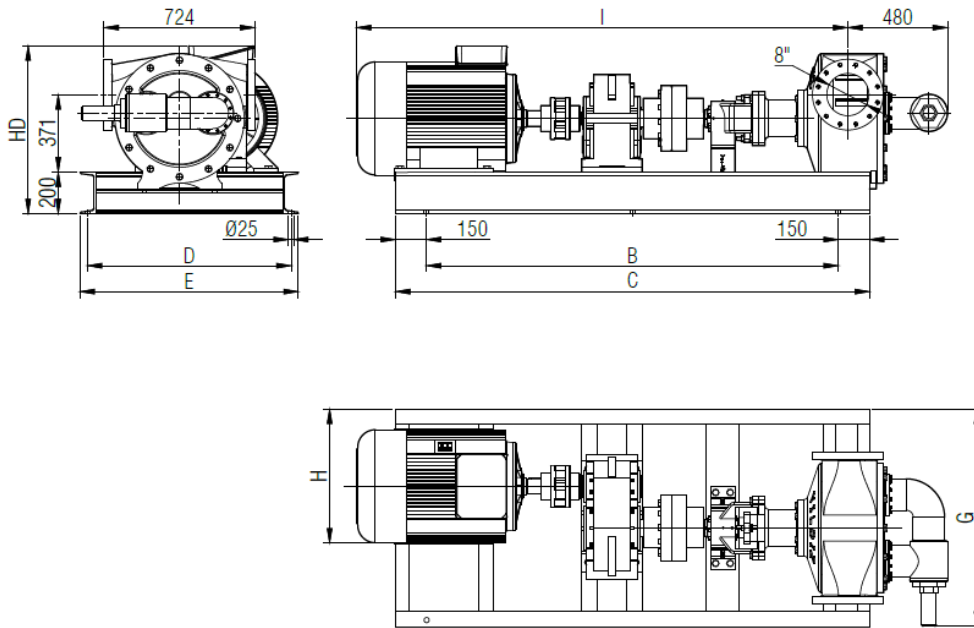


Pump Dimensions - Gearbox drive:



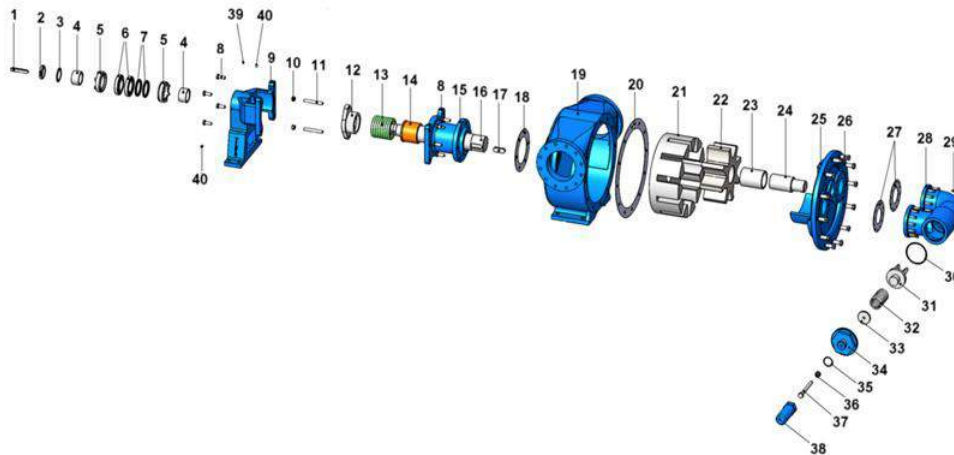
Motor Power & Speed			I	HD	H	B	C	D	E	F	Kg
30 hp / 22 kw	105/350 d/d (rpm)	IRAM92/180L	1918	724	248	1190	1490	520	580	337	1295
40 hp / 30 kw	204/350 d/d (rpm)	IRAM92/200L	1957	751	275	1190	1490				1325
50 hp / 37 kw	89/350 d/d (rpm)	IRAM102/225S	2044	761	285	1280	1580				1540
60 hp / 45 kw	113/350 d/d (rpm)	IRAM102/225M	2069	761	285	1280	1580				1570





Motor Power & Speed		I	HD	H	B	C	D	E	G	Kg	
50 hp / 37 kw	A200-P9 / 225S	DN200	2200	741	591	1840	2140	980	1050	1044	1676
60 hp / 45 kw	A200-P9 / 225M										1700
75 hp / 55 kw	A200-P9 / 250M										1803
100 hp / 75 kw	A200-P9 / 280S										1931
120 hp / 90 kw	A200-P9 / 280M										1985
150 hp / 110 kw	A200-P9 / 315S										2168
175 hp / 132 kw	A200-P9 / 315M	2559	966	836	2080	2380	1080	1150	1201	2250	

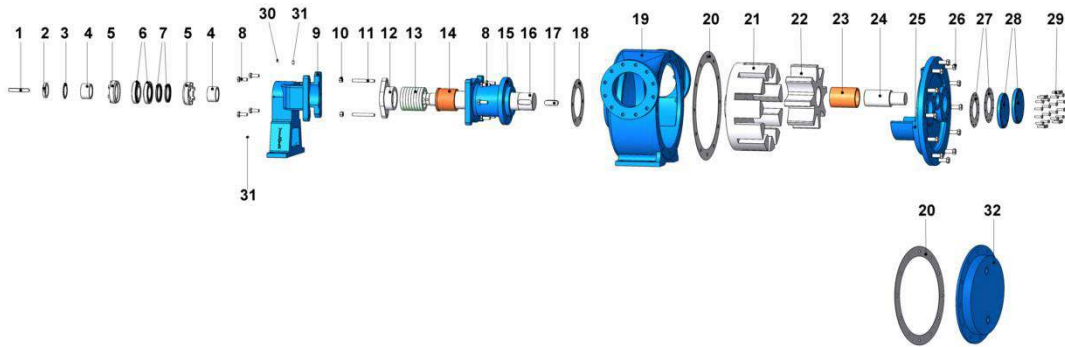
Spare Parts List - Sealed with soft seal, and bypassed with pressure relief valve:



No.	Part Name.	Qty.	No.	Part Name.	Qty.	No.	Part Name.	Qty.
1	Coupling Key 18x11x120 AB	1	15	Interval Bracket	1	29	Hex Bolt M10x40	24
2	Lock Nut	1	16	Shaft	1	30	Bypass O-Ring	1
3	Lock Washer	1	17	Rotor Key 28x16x80 A	1	31	Valve	1
4	Spacer	2	18	Interval Bracket Gasket	1	32	Spring	1
5	Adjusting Nut	2	19	Casing	1	33	Washer	1
6	Ball Bearing (32214)	2	20	Cover Gasket	1	34	Bypass Cover	1
7	Lip Seal ø85xø105x10	2	21	Rotor Gear	1	35	Cap O-Ring	1
8	Hex Bolt M16x45	10	22	Idler Gear	1	36	Nut M20	1
9	Bracket	1	23	Idler Bushing	1	37	Adjusting Screw M20x200	1
10	Nut M16	2	24	Cover Pin	1	38	Cap	1
11	Stud M16x130	2	25	Cover	1	39	Greasing Fitting R3/8"	1
12	Packing Press	1	26	Hex Bolt M20x50	12	40	Grub Screw M12x20	3
13	Soft Seal / Packing Gland	1 TK	27	Bypass Gasket	2			
14	Bracket Bushing	1	28	Pressure Relief Valve - Bypass	1			

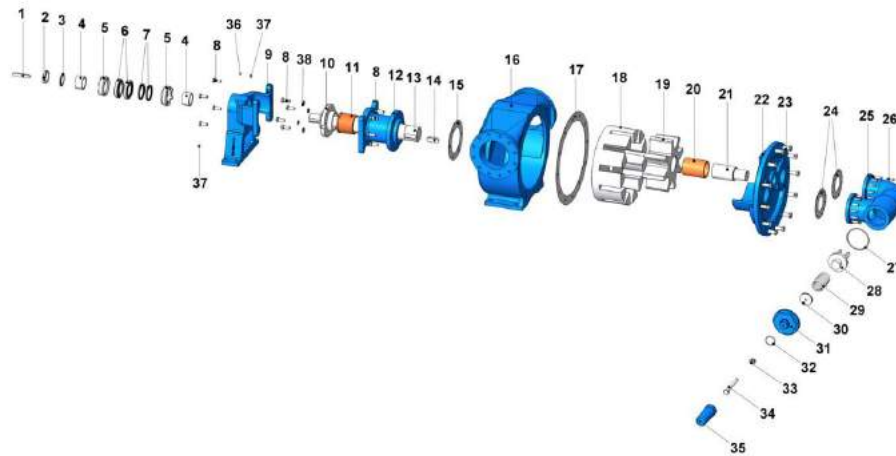


Spare Parts List - Sealed with soft seal, jacketed, and with blind cover:



No.	Part Name.	Qty.	No.	Part Name.	Qty.	No.	Part Name.	Qty.
1	Coupling Key 18x11x120 AB	1	12	Packing Press	1	23	Idler Bushing	1
2	Lock Nut	1	13	Soft Seal / Packing Gland	1 TK	24	Cover Pin	1
3	Lock Washer	1	14	Bracket Bushing	1	25	Cover	1
4	Spacer	2	15	Interval Bracket	1	26	Screw M20x50	12
							Screw M20x70 For Jacketed Cover	12
5	Adjusting Nut	2	16	Shaft	1	27	Bypass Gasket	2
6	Ball Bearing (32214)	2	17	Rotor Key 28x16x80 A	1	28	Bypass Inlets Cover	2
7	Lip Seal ø85xø105x10	2	18	Interval Bracket Gasket	1	29	Hex Bolt M10x40	24
8	Hex Bolt M16x45	10	19	Casing	1	30	Greasing Fitting R3/8"	1
9	Bracket	1	20	Cover Gasket	2	31	Grub Screw M12x20	3
10	Nut M16	2	21	Rotor Gear	1	32	Jacketed Cover	1
11	Stud M16x130	2	22	Idler Gear	1			

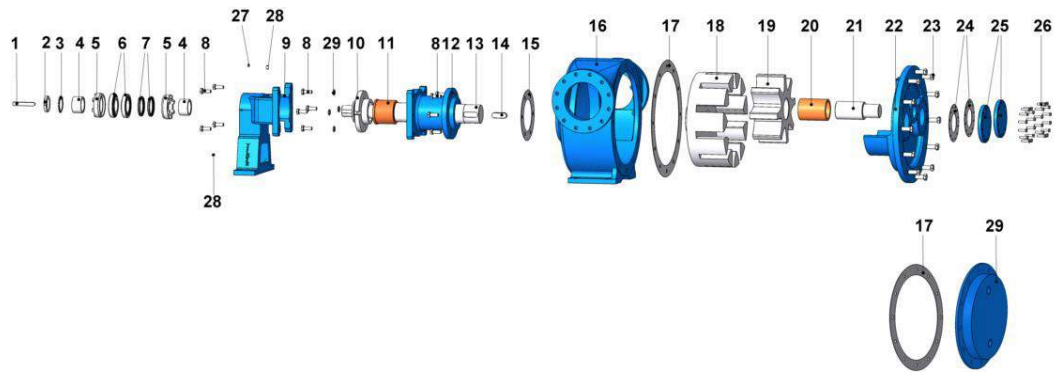
Spare Parts List - Sealed with mechanical seal, and bypassed with pressure relief valve:



No.	Part Name.	Qty.	No.	Part Name.	Qty.	No.	Part Name.	Qty.
1	Coupling Key 18x11x120 AB	1	14	Rotor Key 28x16x80 A	1	27	Bypass O-Ring	1
2	Lock Nut	1	15	Interval Bracket Gasket	1	28	Valve	1
3	Lock Washer	1	16	Casing	1	29	Spring	1
4	Spacer	2	17	Cover Gasket	1	30	Washer	1
5	Adjusting Nut	2	18	Rotor Gear	1	31	Bypass Cover	1
6	Ball Bearing (32214)	2	19	Idler Gear	1	32	Cap O-Ring	1
7	Lip Seal ø85xø105x10	2	20	Idler Bushing	1	33	Nut M20	1
8	Hex Bolt M16x45	14	21	Cover Pin	1	34	Adjusting Screw M20x200	1
9	Bracket	1	22	Cover	1	35	Cap	1
10	Cartex Mechanical Seal Ø100	1	23	Hex Bolt M20x50	12	36	Greasing Fitting R3/8"	1
11	Bracket Bushing	1	24	Bypass Gasket	2	37	Grub Screw M12x20	3
12	Interval Bracket	1	25	Pressure Relief Valve - Bypass	1	38	Washer	4
13	Shaft	1	26	Hex Socket M10x40	24			



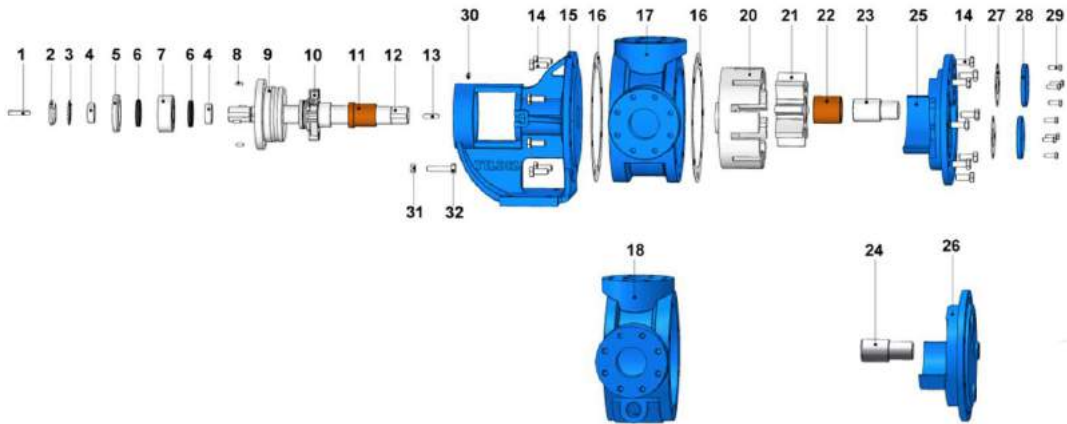
Spare Parts List - Sealed with mechanical seal, jacketed and with blind cover:



No.	Part Name.	Qty.	No.	Part Name.	Qty.	No.	Part Name.	Qty.
1	Coupling Key 18x11x120 AB		11	Bracket Bushing		21	Cover Pin	1
2	Lock Nut		12	Interval Bracket		22	Cover	1
3	Lock Washer		13	Shaft		23	Screw M20x50	12
							Screw M20x70 For Jacketed Cover	12
4	Spacer		14	Rotor Key 28x16x80 A		24	Bypass Gasket	2
5	Adjusting Nut		15	Interval Bracket Gasket		25	Bypass Inlets Cover	2
6	Ball Bearing (32214)		16	Casing		26	Hex Bolt M10x40	24
7	Lip Seal $\varnothing 85 \times \varnothing 105 \times 10$		17	Cover Gasket		27	Greasing Fitting R3/8"	1
8	Hex Bolt M16x45		18	Rotor Gear		28	Grub Screw M12x20	3
9	Bracket		19	Idler Gear		29	Washer	1
10	Cartex Mechanical Seal $\varnothing 100$		20	Idler Bushing		30	Jacketed Cover	



Spare Parts List - Sealed with cartex mechanical seal, jacketed and with blind cover:



No.	Part Name.	Qty.	No.	Part Name.	Qty.	No.	Part Name.	Qty.
1	Coupling Key 12x8x60 AB	1	12	Shaft	1	23	Cover Pin	1
2	Lock Nut	1	13	Rotor Key 12x8x45 A	1	24	Jacketed Cover Pin	1
3	Lock Washer	1	14	Hex Bolt M16x40	16	25	Cover	1
4	Spacer	2	15	Bracket (w/ Cartex Mech. Seal)	1	26	Jacketed Cover	1
5	Pulley Cover	1	16	Bracket & Cover Gasket	2	27	Bypass Gasket	2
6	Lip Seal $\phi 55 \times \phi 72 \times 10$	2	17	Casing (w/ 90° Flanged Ports)	1	28	Bypass Inlets Cover	2
7	Ball Bearing (3209)	1	18	Casing (w/ 90° Flanged Ports & w/ Heating Jacket)	1	29	Hex Bolt M10x30	8
8	Grub Screw M8x20	4	19	—————	30	Greasing Fitting R3/8"	1	
9	Pulley	1	20	Rotor Gear	1	31	Nut M14	2
10	Cartex Mechanical Seal $\phi 50$	1	21	Idler Gear	1	32	Square Screw M14x90	2
11	Bracket Bushing	1	22	Idler Bushing	1			