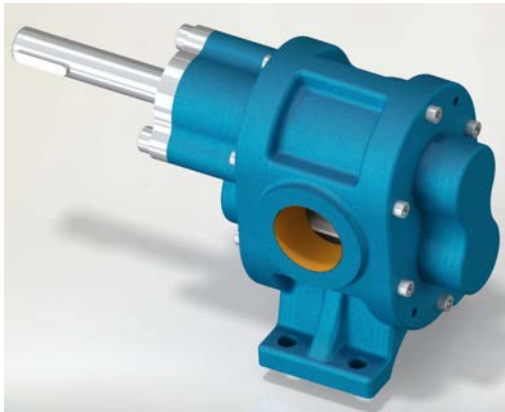




GAEG 2" - Modular Gear Pump



Performance:

Flow rate	7 m ³ /h
Pressure	1 - 12 bar
Temperature	0 - 70 °C
Speed	1 - 1500 d/d
Viscosity	100 - 2500 SSU

Technical Features:

- ✓ Modular gear pump
- ✓ 2" threaded ports
- ✓ Designed for applications that require low flow
- ✓ Compact design
- ✓ Reliable construction
- ✓ Various sealing options
- ✓ Various material options
- ✓ Motor drive and gearbox drive versions available
- ✓ 230v, three phase 50/60hz motors available
- ✓ Manufactured according to CE regulations

Applications:

- ✓ Fuel oil, diesel fuel and gas oil transfer
- ✓ Small scale thermal oil applications including Marlotherm, Duratherm, Paratherm, Multitherm, Mobiltherm and Dowtherm
- ✓ Lubrication applications
- ✓ Coolant transfer
- ✓ Any transfer of low to medium viscosity fluids with lubricating properties
- ✓ Not suitable for fluids containing abrasive particles

Material Options:

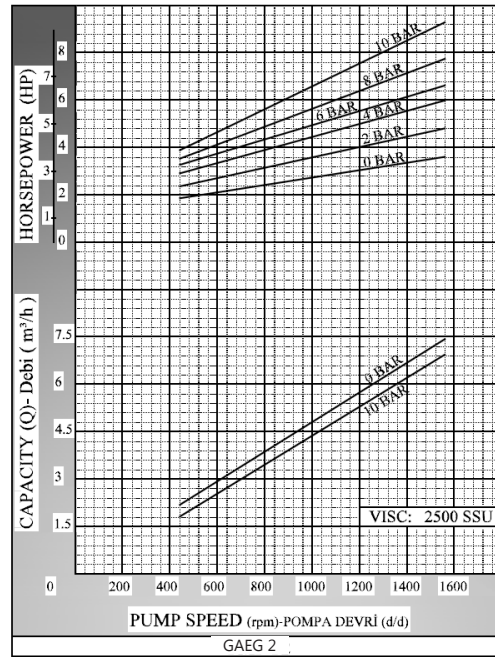
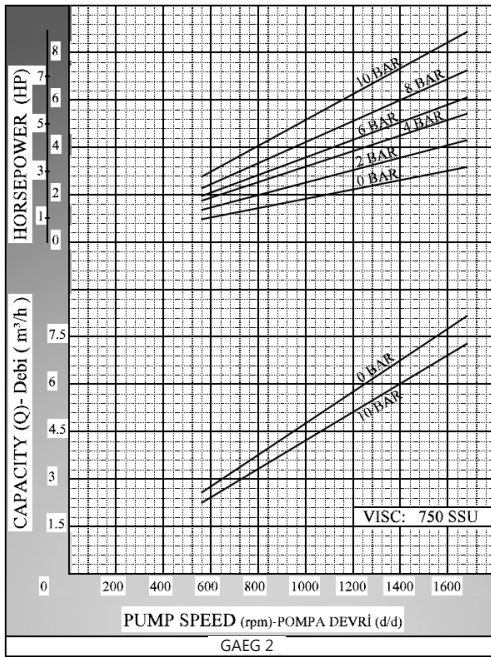
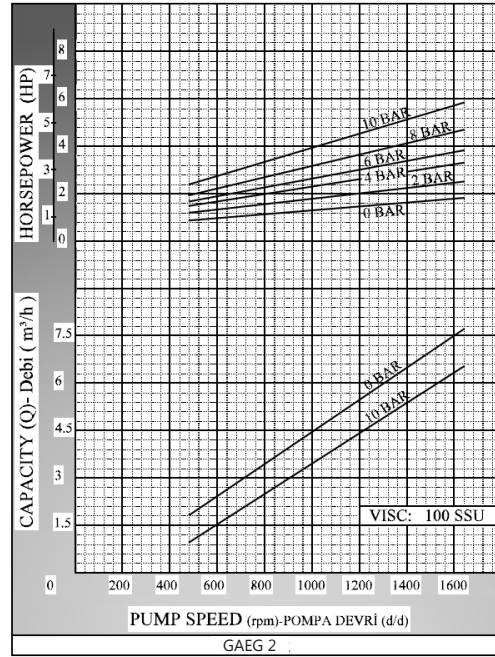
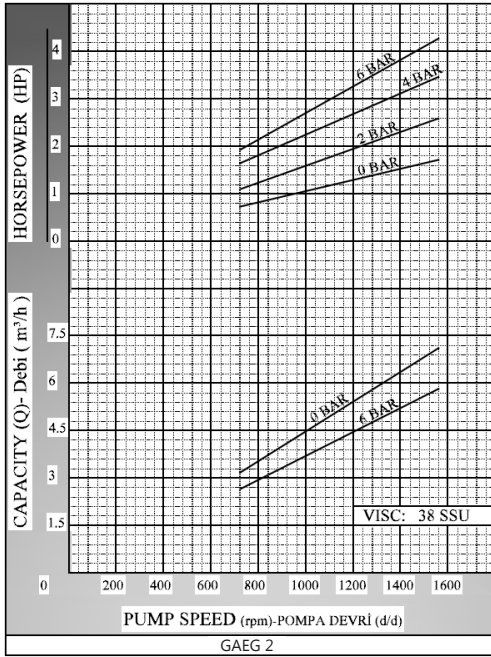
- ✓ Pump body & covers: Cast iron, steel cast, stainless AISI 304/316 cast
- ✓ Gears: Steel, stainless steel AISI 304 / 316
- ✓ Bearings: Snbz 12 bronze, bearing, carbon graphite, Ina bushing bearing
- ✓ Sealing: Soft seal, mechanical seal, lip seal

Capacity & Power Table					
Capacity (Q)	Speed (rpm)	Pressure			Viscosity
		0 Bar	3.5 Bar	7 Bar	
3.3	750	3 HP	4 HP	5.5 HP	2500 SSU
4.2	900	2 HP	3 HP	4 HP	750 SSU
5.7	1400	2 HP	3 HP	4 HP	100 SSU

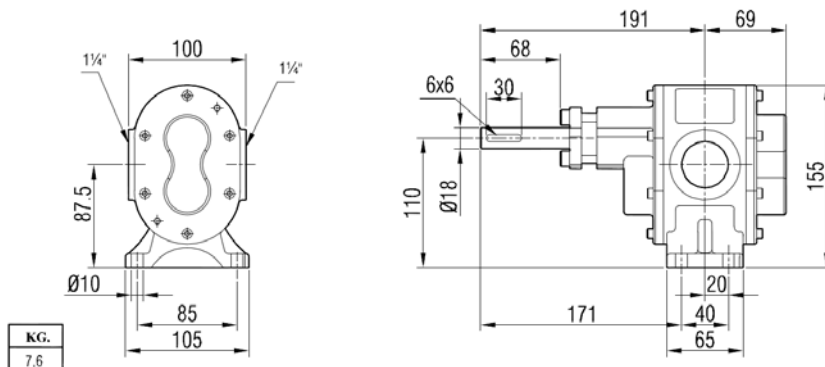
Motor Powers		Motor Powers		Motor Powers		Motor Powers	
2 HP	1400 d/d (rpm)	2 HP	1000 d/d (rpm)	3 HP	900 d/d (rpm)	3 HP	750 d/d (rpm)
Motor Body		3 HP	1400 d/d (rpm)	Motor Body		4 HP	750 d/d (rpm)
90		4 HP	1400 d/d (rpm)	112		4 HP	900 d/d (rpm)
		Motor Body				Motor Body	
		100				132	



Performance Curves:

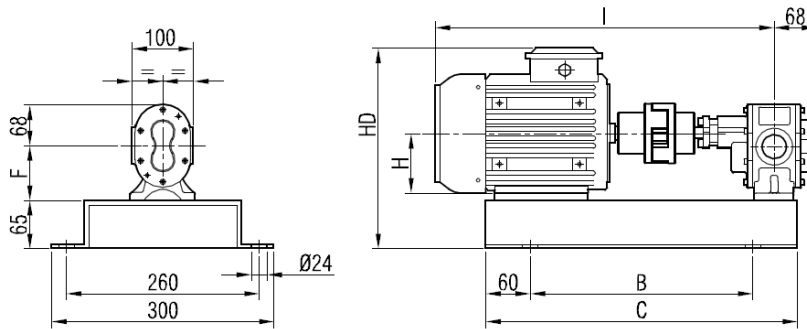


Pump Dimensions:



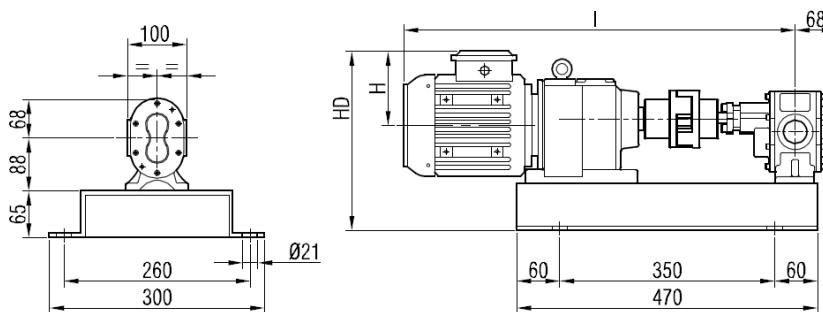


Coupling Dimensions - Motor Drive:



Motor Power & Speed			I	HD	H	B	C	D	E	F	Kg	
0.5 hp / 0.37 kw	900 d/d (rpm)	MOTOR 80	484	293	80	350	470				27	
0.75-1 hp / 0.55-0.75 kw	1400 d/d (rpm)										27	28
0.5 hp / 0.37 kw	750 d/d (rpm)	MOTOR 90S	516	301	90	380	500	260	300	88	31	
1 hp / 0.75 kw	900 d/d (rpm)										30	
1.5 hp / 1.1 kw	1400 d/d (rpm)	MOTOR 90L	568								31	
1 hp / 0.55 kw	750 d/d (rpm)										33	
1.5 hp / 1.1 kw	900 d/d (rpm)	MOTOR 100L	617	310	100	430	550				37	
2 hp / 1.5 kw	1400 d/d (rpm)										39	
1-1.5 hp / 0.75-1.1 kw	750 d/d (rpm)	MOTOR 100L	617	310	100	430	550				37	
2 hp / 1.5 kw	900 d/d (rpm)										40	
3-4 hp / 2.2-3 kw	1400 d/d (rpm)	MOTOR 112M	605	322	112	420	620	310	350	90	53	
2 hp / 1.5 kw	750 d/d (rpm)										54	
3 hp / 2.2 kw	900 d/d (rpm)											
5.5 hp / 4 kw	1400 d/d (rpm)											

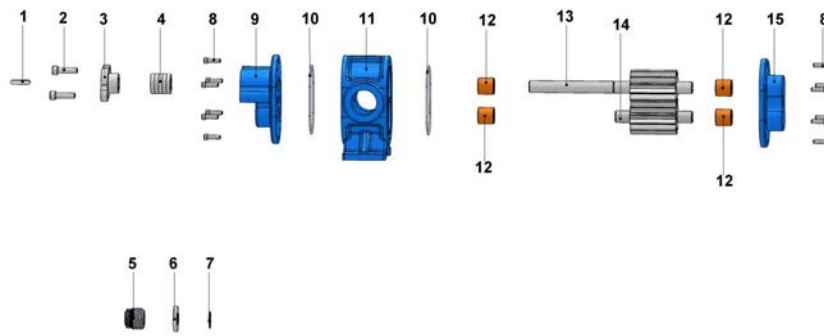
Coupling Dimensions - Gearbox Drive:



Motor Power & Speed			I	HD	H	Kg
0.75 hp / 0.55 kw	75/406 d/d (rpm)	IRAM42/80M	622	289	118	35
1 hp / 0.75 kw	40/240 d/d (rpm)	IRAM52/80M	656			41
1.5 hp / 1.1 kw	60/380 d/d (rpm)	IRAM52/90S	675	302	132	44
2 hp / 1.5 kw	100/540 d/d (rpm)	IRAM52/90L	700			46
3 hp / 2.2 kw	175/540 d/d (rpm)	IRAM52/100L	729	310	141	50
4 hp / 3 kw	345/650 d/d (rpm)	IRAM52/100L				53



Spare Parts List - Sealed with soft seal or mechanical seal:



No.	Part Name.	Qty.
1	Coupling Key 6x6x30	1
2	Imbus Bolt M8x30	2
3	Packing Press	1
4	Soft Seal / Packing Gland	5
5	Mechanical Seal (ø18)	1
6	Mechanical Seal Washer	1
7	External Circlip (ø18)	1
8	Imbus Bolt M6x20	12
9	Front Cover	1
10	Casing O-Ring ø69xø3	2
11	Casing	1
12	Bushing	4
13	Driving Shaft	1
14	Driven Shaft	1
15	Back Cover	1