



GAE 3/4" High Pressure Modular Gear Pump



Performance:

Flowrate	1.4 m ³ /h
Pressure	1 - 30 bar
Temperature	0 - 100 °C
Speed	1 - 1500 d/d
Viscosity	100 - 2500 SSU

Technical Features:

- ✓ High pressure modular gear pump
- ✓ 3/4" threaded ports
- ✓ Designed for applications that require low flow and high pressures
- ✓ Compact design
- ✓ Reliable construction
- ✓ Various sealing options
- ✓ Various material options
- ✓ 230v, three phase 50/60hz motors available
- ✓ Manufactured according to CE regulations

Applications:

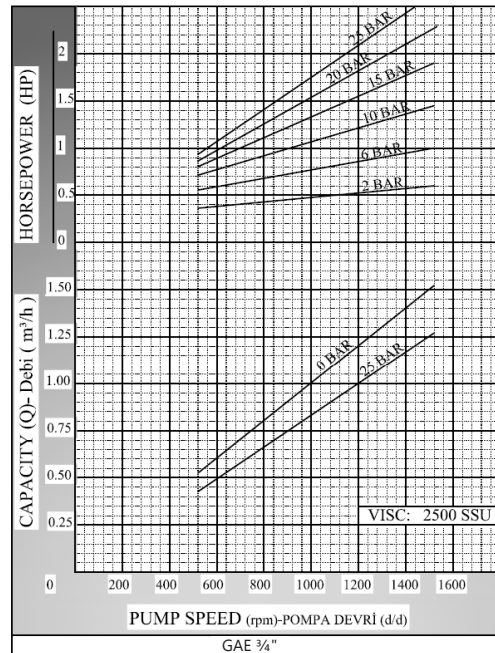
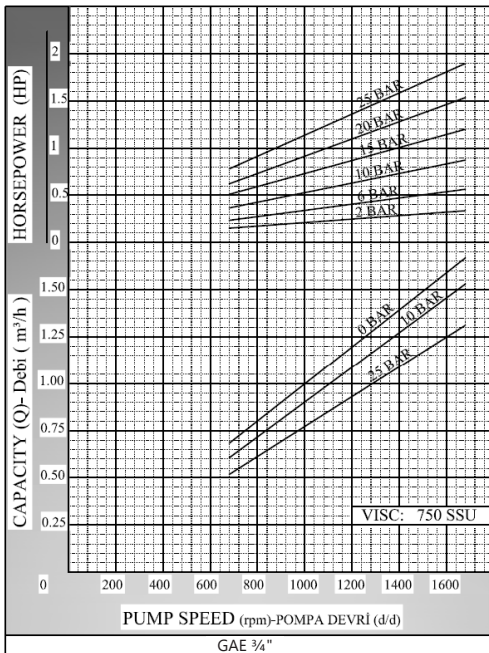
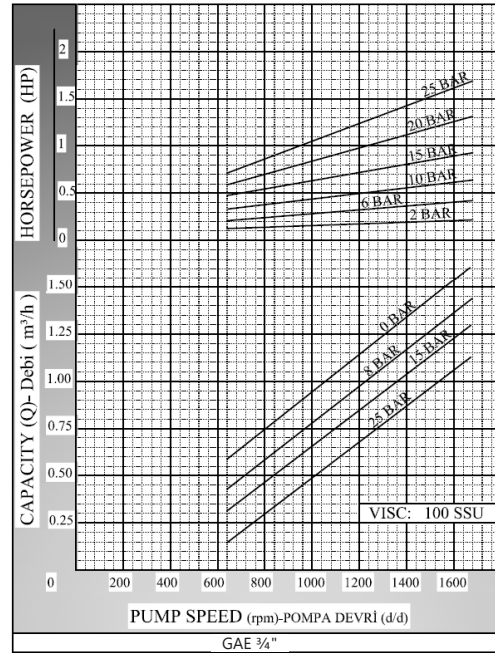
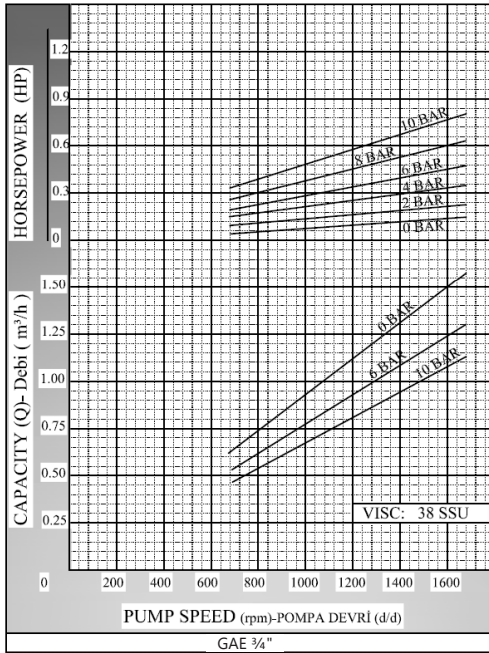
- ✓ Fuel oil, diesel fuel and gas oil transfer
- ✓ Small scale thermal oil applications including Marlotherm, Duratherm, Paratherm, Multitherm, Mobiltherm and Dowtherm
- ✓ Lubrication applications
- ✓ Coolant transfer
- ✓ Any transfer of low to medium viscosity fluids with lubricating properties
- ✓ Not suitable for fluids containing abrasive particles

Material Options:

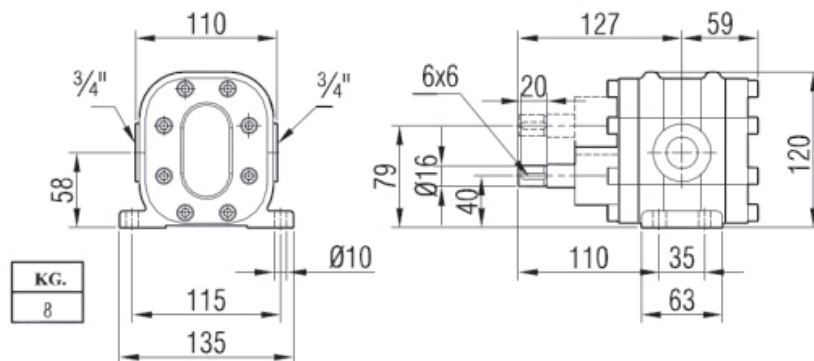
- ✓ Pump body & covers: Cast iron, steel cast, stainless AISI 304/316 cast
- ✓ Gears: Steel, stainless steel AISI 304 / 316
- ✓ Bearings: Snbz 12 bronze, bearing, carbon graphite, Ina bushing bearing
- ✓ Sealing: Soft seal, mechanical seal, lip seal



Performance Curves:

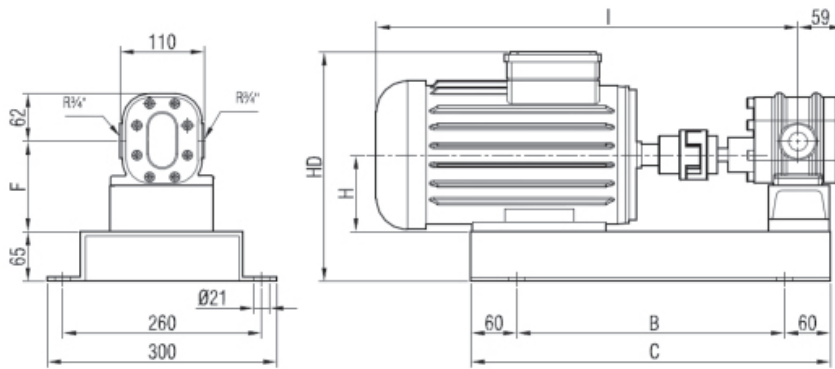


Pump Dimensions:



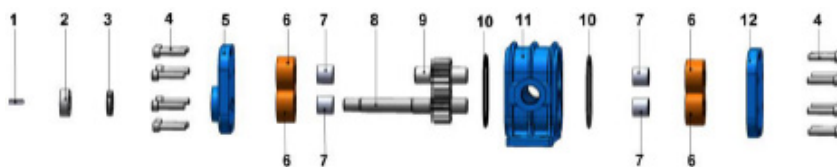


Coupling Dimensions:



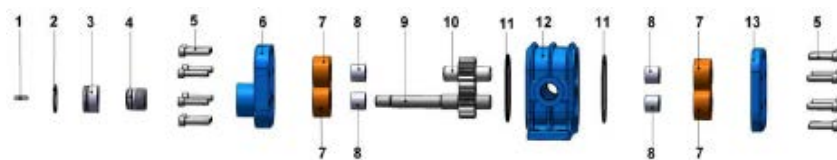
Motor Power & Speed			I	HD	H	B	C	D	E	F	G	Kg	
0.5 hp / 0.37 kw	900 d/d (rpm)	MOTOR 80	423	266	80	300				98		27	
0.75-1 hp / 0.55-0.75 kw	1400 d/d (rpm)											27	28
0.5 hp / 0.37 kw	750 d/d (rpm)	MOTOR 90S	452	281	90						60	31	
1 hp / 0.75 kw	900 d/d (rpm)												
1.5 hp / 1.1 kw	1400 d/d (rpm)	MOTOR 90L	504			350	470	260	300	108		33	
1 hp / 0.55 kw	750 d/d (rpm)												
1.5 hp / 1.1 kw	900 d/d (rpm)	MOTOR 100L	551	300	100							34	
2 hp / 1.5 kw	1400 d/d (rpm)												
1-1.5 hp / 0.75-1.1 kw	750 d/d (rpm)	MOTOR 100L	551	300	100							39 40	
2 hp / 1.5 kw	900 d/d (rpm)											40	
3-4 hp / 2.2-3 kw	1400 d/d (rpm)											38 42	

Spare Parts List - Lip Seal:



No.	Part Name.	Qty.
1	Coupling Key 6x6x20 A	1
2	Seal Cover	1
3	Lip Seal $\phi 18 \times \phi 32 \times 6$	2
4	Imbus Bolt M8x25	8
5	Front Cover	1
6	Bushing	4
7	Ina Bearing	4
8	Driving Shaft	1
9	Driven Shaft	1
10	Casing O-Ring	2
11	Casing	1
12	Back Cover	1

Spare Parts List - Mechanical Seal:



No.	Part Name.	Qty.
1	Coupling Key 6x6x20 A	1
2	Internal Circlip ($\phi 37$)	1
3	Mechanical Seal Sleeve	1
4	Mechanical Seal $\phi 18$	1
5	Imbus Bolt M8x25	16
6	Front Cover	1
7	Bushing	4
8	Ina Bearing	4
9	Driving Shaft	1
10	Driven Shaft	1
11	Casing O-Ring $\phi 74 \times \phi 3$	2
12	Casing	1
13	Back Cover	1