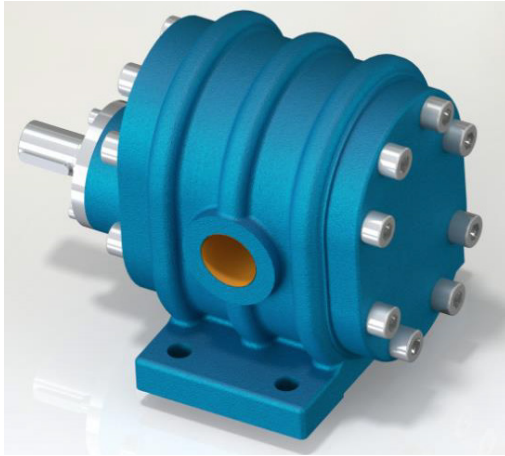




GAE 1" High Pressure Modular Gear Pump



Performance:

Flow rate	2.5 m ³ /h
Pressure	1 - 30 bar
Temperature	0 - 100 °C
Speed	1 - 1500 d/d
Viscosity	100 - 2500 SSU

Technical Features:

- ✓ High pressure modular gear pump
- ✓ 1" threaded ports
- ✓ Designed for applications that require low flow and high pressures
- ✓ Compact design
- ✓ Reliable construction
- ✓ Various sealing options
- ✓ Various material options
- ✓ Available with jacketed cover
- ✓ 230v, three phase 50/60hz motors available
- ✓ Manufactured according to CE regulations

Applications:

- ✓ Fuel oil, diesel fuel and gas oil transfer
- ✓ Small scale thermal oil applications including Marlotherm, Duratherm, Paratherm, Multitherm, Mobiltherm and Dowtherm
- ✓ Lubrication applications
- ✓ Coolant transfer
- ✓ Any transfer of low to medium viscosity fluids with lubricating properties
- ✓ Not suitable for fluids containing abrasive particles

Material Options:

- ✓ Pump body & covers: Cast iron, steel cast, stainless AISI 304/316 cast
- ✓ Gears: Steel, stainless steel AISI 304 / 316
- ✓ Bearings: Snbz 12 bronze, bearing, carbon graphite, Ina bushing bearing
- ✓ Sealing: Soft seal, mechanical seal, lip seal

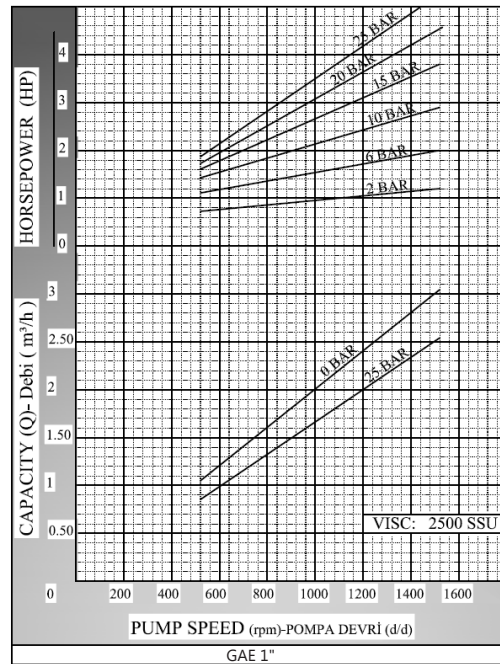
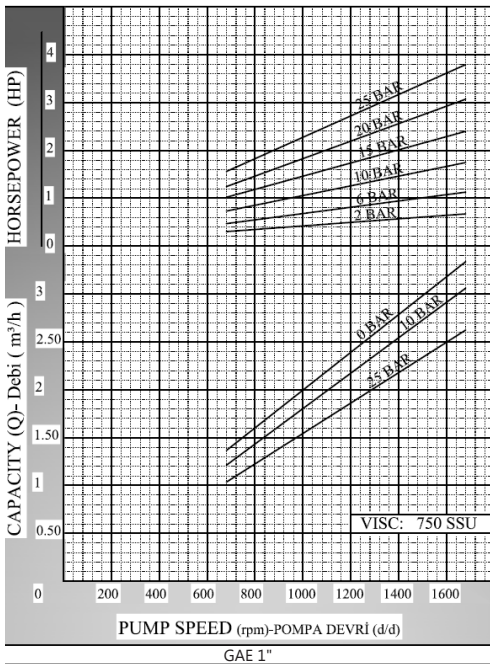
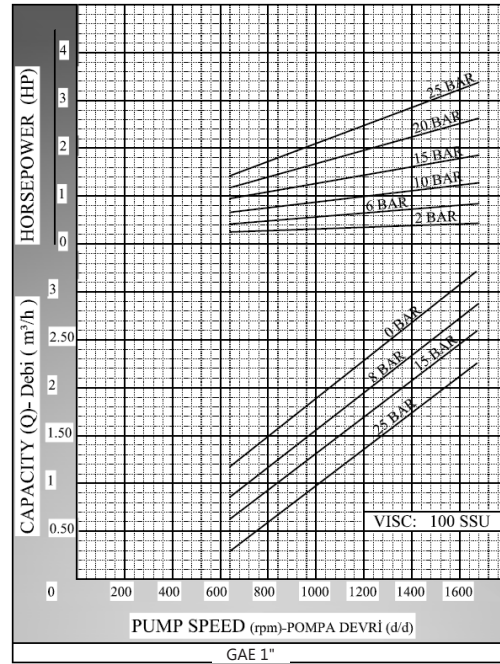
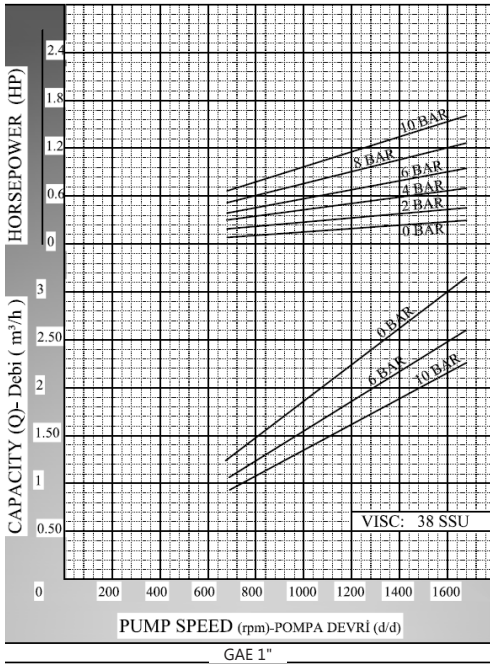
Capacity & Power Table					
Capacity (Q)	Speed (rpm)	Pressure			Viscosity
		0 Bar	3.5 Bar	7 Bar	
1.3	750	1 HP	1.5 HP	2 HP	2500 SSU
1.6	900	0.75 HP	1 HP	1.5 HP	750 SSU
2.2	1400	0.75 HP	1 HP	1.5 HP	100 SSU

Motor Powers		Motor Powers		Motor Powers		Motor Powers	
0.75 HP	900 d/d (rpm)	1 HP	900 d/d (rpm)	1 HP	900 d/d (rpm)	2 HP	750 d/d (rpm)
0.75 HP	1400 d/d (rpm)	1.5 HP	900 d/d (rpm)	1.5 HP	900 d/d (rpm)	Motor Body	
1 HP	1400 d/d (rpm)	1.5 HP	1400 d/d (rpm)	Motor Body		112	
Motor Body		Motor Body		100			
80		90					

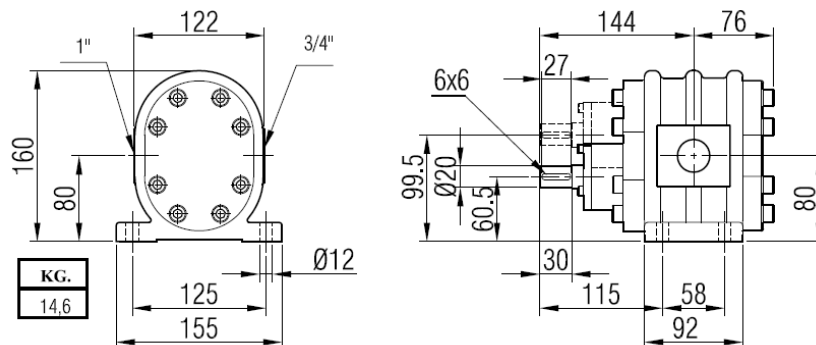




Performance Curves:

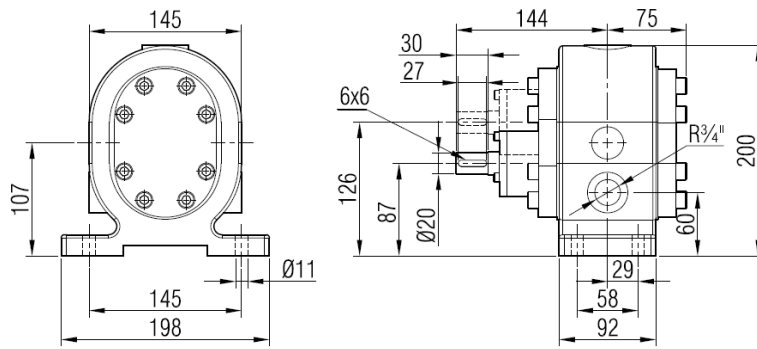


Pump Dimensions:

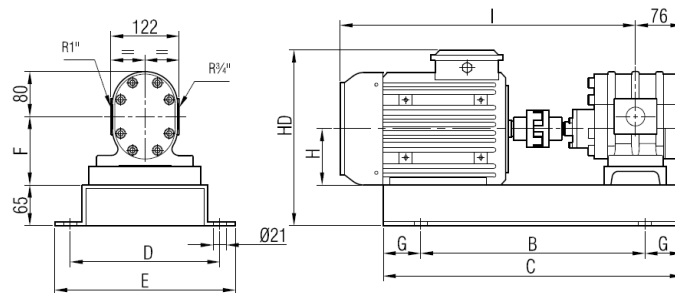




With jacketed casing:

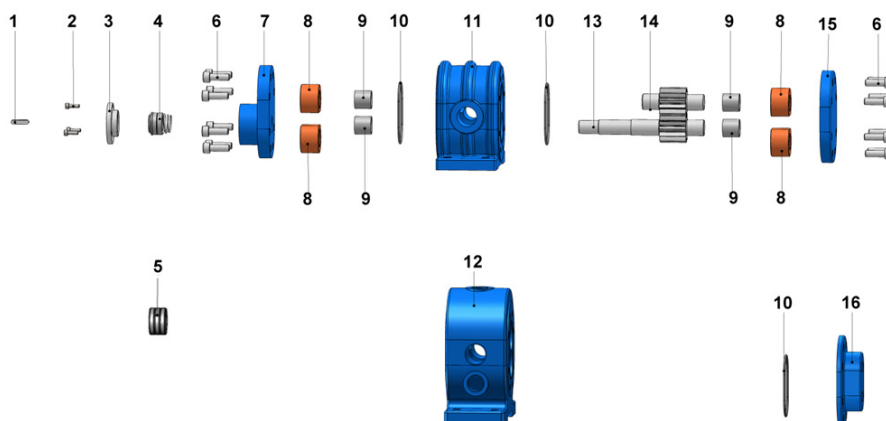


Coupling Dimensions:



Motor Power & Speed		I	HD	H	B	C	D	E	F	G	Kg	
1.5 hp / 1.1 kw	1400 d/d (rpm)	MOTOR 90S	472	281	90	380	500	260	300	109	60	38
1.5 hp / 1.1 kw	900 d/d (rpm)	MOTOR 90L	524									40
2 hp / 1.5 kw	1400 d/d (rpm)	MOTOR 100L	570	300	100	430	550			119		47
2 hp / 1.5 kw	900 d/d (rpm)											45
3 - 4 hp / 2.2 - 3 kw	1400 d/d (rpm)											
2 hp / 1.5 kw	750 d/d (rpm)	MOTOR 112M	585	323	112							62
3 hp / 2.2 kw	900 d/d (rpm)											
5.5 hp / 4 kw	1400 d/d (rpm)	MOTOR 132S	626			420	620	310	350	151	100	72
3 hp / 2.2 kw	750 d/d (rpm)											73
4 hp / 3 kw	900 d/d (rpm)	MOTOR 132M	671	365	132							77
7.5 hp / 5.5 kw	1400 d/d (rpm)											80
4 hp / 3 kw	750 d/d (rpm)											84
5.5 hp / 4 kw	900 d/d (rpm)											87
10 hp / 7.5 kw	1400 d/d (rpm)											

Spare Parts List - Lip Seal:



No.	Part Name.	Qty.
1	Coupling Key 6x6x27 A	1
2	Hex Socket M5x16	3
3	Seal Cover	1
4	Mechanical Seal Ø22	1
5	Lip Seal ø22xø40x8	3
6	Hex Socket M10x30	16
7	Front Cover	1
8	Bushing	4
9	Inna Bushing	4
10	Casing O-Ring Ø75xØ3	2
11	Casing	1
12	Jacketed Casing	1
13	Driving Shaft	1
14	Driven Shaft	1
15	Back Cover	1
16	Cover (w/ Heating Jacket)	1