



1" GAR Internal Eccentric Gear Pump



Performance:

Flow rate	2 m ³ /h
Pressure	1 - 14 bar
Temperature	0 - 120 °C
Speed	1400 d/d
Viscosity	100 - 7500 SSU

Technical Features:

- ✓ Internal eccentric gear pump
- ✓ 1" threaded ports
- ✓ Compact design
- ✓ Reliable construction thanks to only two moving parts
- ✓ Various material options
- ✓ Available with external bypass and blind cover
- ✓ 230v, three phase 50/60hz motors available
- ✓ Motor and gearbox drive available
- ✓ Manufactured according to CE regulations

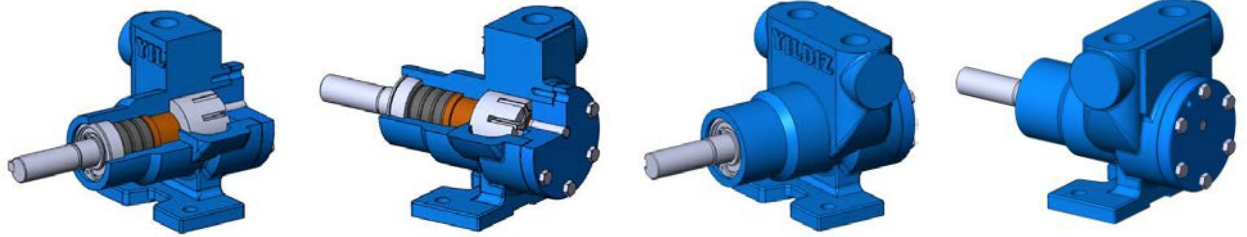
Applications:

- ✓ Fuel oil, diesel fuel and gas oil transfer
- ✓ Small scale thermal oil applications including Marlotherm, Duratherm, Paratherm, Multitherm, Mobiltherm and Dowtherm
- ✓ Lubrication applications
- ✓ Coolant transfer
- ✓ Any transfer of low to medium viscosity fluids with lubricating properties
- ✓ Not suitable for fluids containing abrasive particles

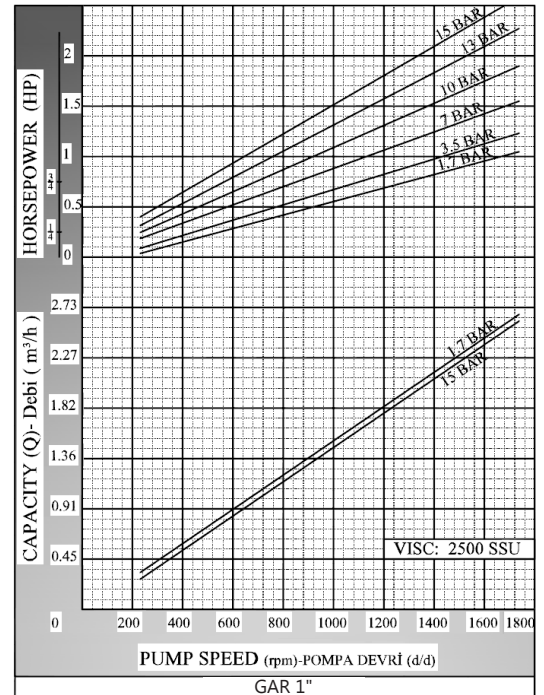
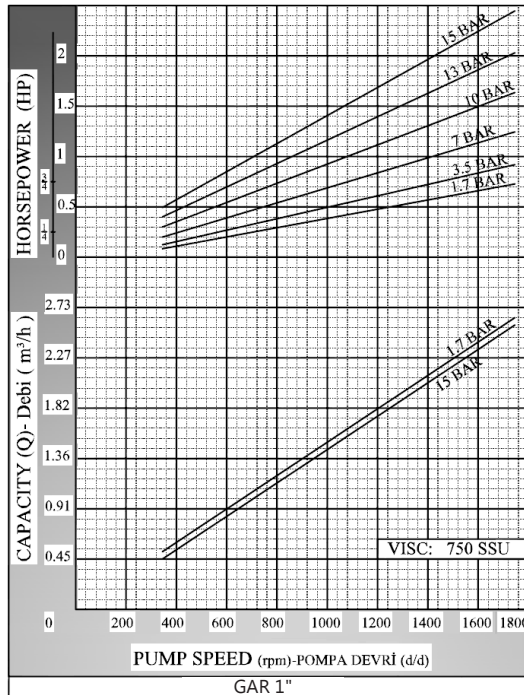
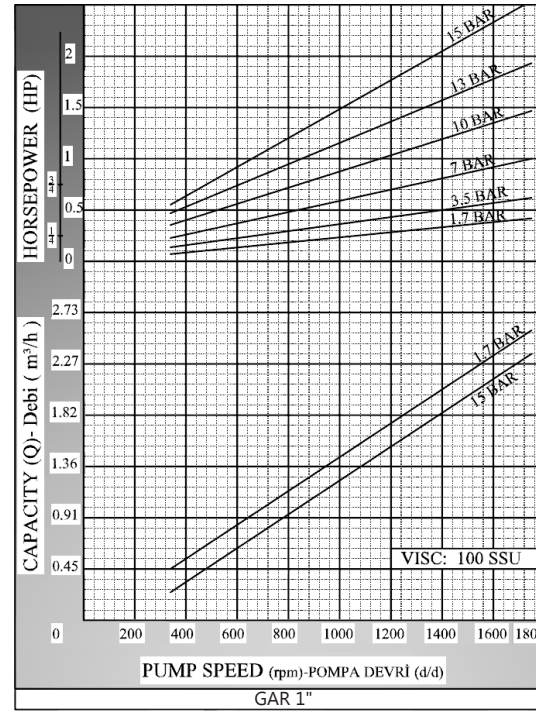
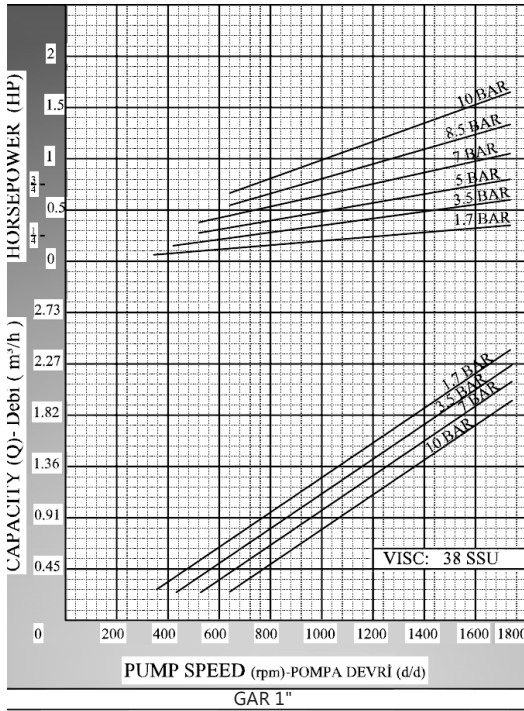
Material Options:

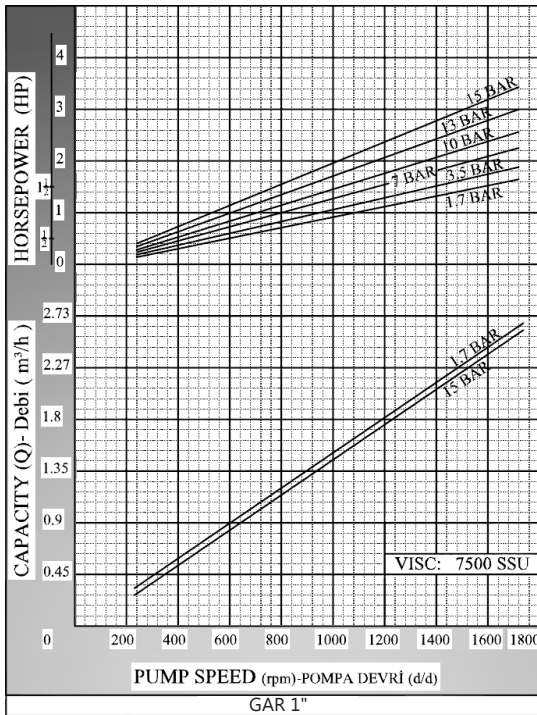
- ✓ Pump body, covers: Cast iron, steel cast
- ✓ Gears: Cast iron, steel cast, Spheroidal cast iron
- ✓ Bearings: Snbz 12 bronze, carbon graphite, silicon carbide, hard metal coated steel
- ✓ Sealing: Lip seal

Capacity & Power Table							
Capacity (Q)	Speed (rpm)	Pressure				Viscosity	
		2.5 Bar	5 Bar	7.5 Bar	10 Bar		
1.2	900	0.5 HP	0.75 HP	0.75 HP	1 HP	750 SSU	
2	1400	0.75 HP	0.1 HP	0.1 HP	1.5 HP	100 SSU	
Motor Powers						Motor Powers	
0.5 HP	900 d/d (rpm)					1 HP	900 d/d (rpm)
0.75 HP	900 d/d (rpm)					1.5 HP	900 d/d (rpm)
0.75 HP	1400 d/d (rpm)					1.5 HP	1400 d/d (rpm)
1 HP	1400 d/d (rpm)					Motor Body	
Motor Body						90	
80							

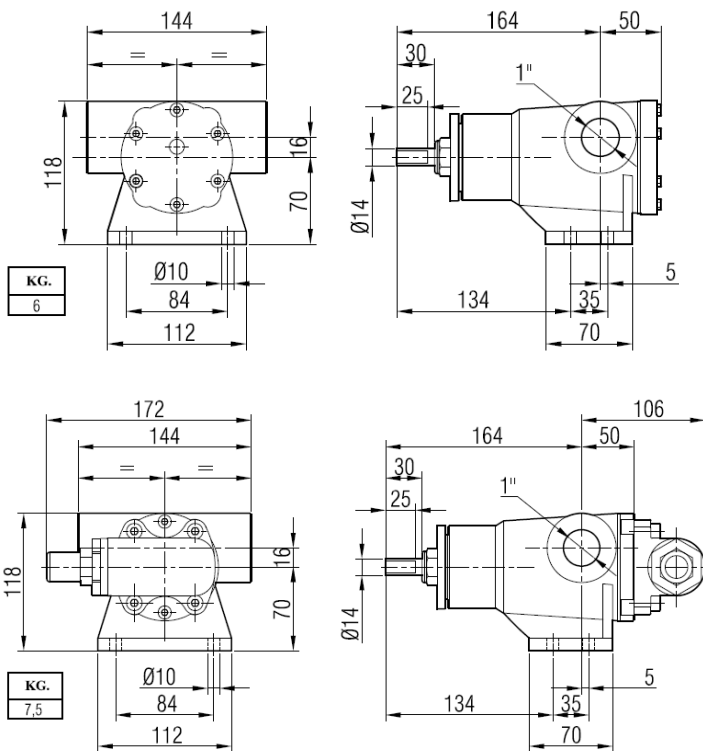


Pump Dimensions - Capacity Graphs:

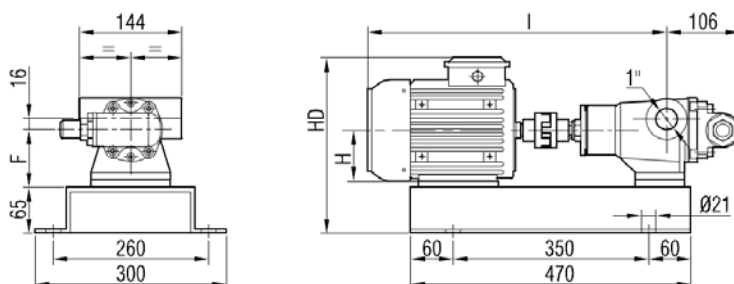




Pump Dimensions:

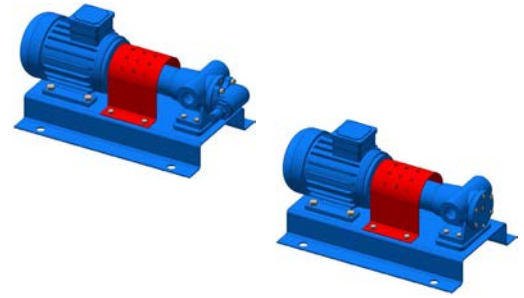


Coupling Dimensions - Motor and gearbox drive:

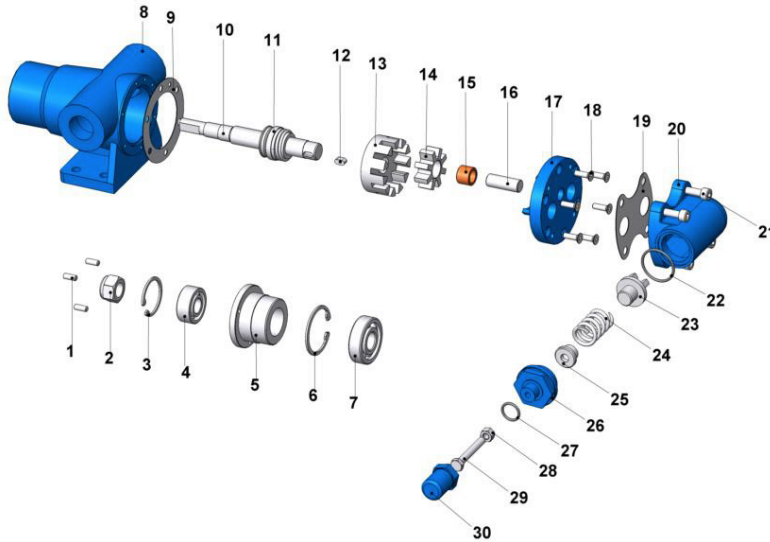




Motor Power & Speed			I	HD	H	F	Kg	
0.5-0.75 hp / 0.37-0.55 kw	0.75-1 hp / 0.55-0.75 kw	MOTOR 80	471	263	80	80	26	26
900 d/d (rpm)	1400 d/d (rpm)						28	27
1 hp / 0.75 kw	1.5 hp / 1.1 kw	MOTOR 90S	501	281	90	90	30	
900 d/d (rpm)	1400 d/d (rpm)						32	
1.5 hp / 1.1 kw	2 hp / 1.5 kw	MOTOR 90L	553				32	
900 d/d (rpm)	1400 d/d (rpm)							

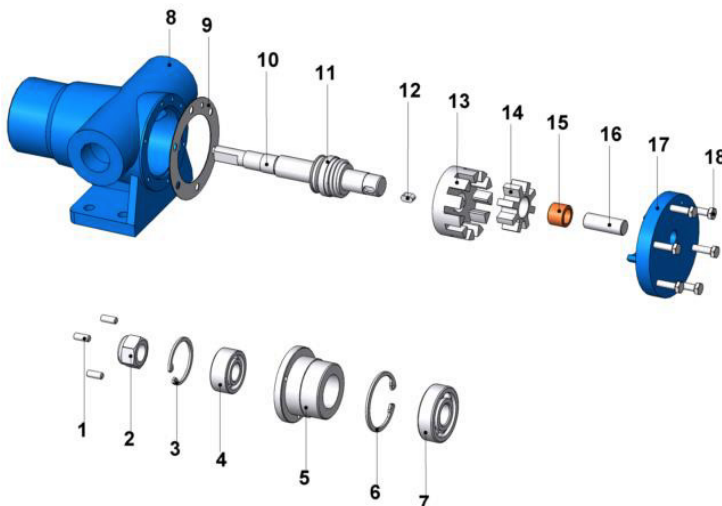


Spare Parts List - Sealed with mechanical seal, and pressure relief valve on cover:



No.	Part Name.	Qty.	No.	Part Name.	Qty.	No.	Part Name.	Qty.
1	Grub Screw M6x16	3	11	Mechanical Seal Ø20	1	21	Inbus Bolt M8x25	4
2	Pulley Nut	1	12	Key 6x6x12 A	1	22	Relief Valve O-Ring	1
3	Pulley Internal Circlip (Ø40)	1	13	Rotor Gear	1	23	Valve	1
4	Ball Bearing (62203-2RS)	1	14	Idler Gear	1	24	Spring	1
5	Pulley	1	15	Idler Gear Bushing	1	25	Bypass Washer	1
6	Casing Internal Circlip (Ø52)	1	16	Cover Pin	1	26	Bypass Cover	1
7	Bearing (6304-2RS)	1	17	Cover (w/ Bypass Inlets)	1	27	Bypass O-Ring	1
8	Casing	1	18	Countersunk Bolt M6x20	6	28	M8 Nut	1
9	Cover Gasket	1	19	Relief Valve Gasket	1	29	Adjusting Screw M8x55	1
10	Shaft	1	20	Pressure Relief Valve - Bypass	1	30	Cap	1

Spare Parts List - Sealed with mechanical seal, and with blind cover:



No.	Part Name.	Qty.
1	Grub Screw M6x16	3
2	Pulley Nut	1
3	Pulley Internal Circlip (Ø40)	1
4	Ball Bearing (62203-2RS)	1
5	Pulley	1
6	Casing Internal Circlip (Ø52)	1
7	Bearing (6304-2RS)	1
8	Casing	1
9	Cover Gasket	1
10	Shaft	1
11	Mechanical Seal Ø20	1
12	Key 6x6x12 A	1
13	Rotor Gear	1
14	Idler Gear	1
15	Idler Gear Bushing	1
16	Cover Pin	1
17	Blind Cover	1
18	Hex Bolt M6x20	6