



## 2" GAR Internal Eccentric Gear Pump



### Performance:

|             |                     |
|-------------|---------------------|
| Flow rate   | 9 m <sup>3</sup> /h |
| Pressure    | 1 - 12 bar          |
| Temperature | 0 - 200 °C          |
| Speed       | 1400 d/d            |
| Viscosity   | 100 - 7500 SSU      |

### Technical Features:

- ✓ Internal eccentric gear pump
- ✓ 2" threaded ports
- ✓ Compact design
- ✓ Reliable construction thanks to only two moving parts
- ✓ Various material options
- ✓ Available with external bypass and blind cover
- ✓ 230v, three phase 50/60hz motors available
- ✓ Motor and gearbox drive available
- ✓ Manufactured according to CE regulations

### Applications:

- ✓ Fuel oil, diesel fuel and gas oil transfer
- ✓ Small scale thermal oil applications including Marlotherm, Duratherm, Paratherm, Multitherm, Mobiltherm and Dowtherm
- ✓ Lubrication applications
- ✓ Coolant transfer
- ✓ Any transfer of low to medium viscosity fluids with lubricating properties
- ✓ Not suitable for fluids containing abrasive particles

### Material Options:

- ✓ Pump body, covers: Cast iron, steel cast
- ✓ Gears: Cast iron, steel cast, Spheroidal cast iron
- ✓ Bearings: Sbnz 12 bronze, carbon graphite, silicon carbide, hard metal coated steel
- ✓ Sealing: Lip seal

| Capacity & Power Table |             |          |       |        |        |           |
|------------------------|-------------|----------|-------|--------|--------|-----------|
| Capacity (Q)           | Speed (rpm) | Pressure |       |        |        | Viscosity |
|                        |             | 3 Bar    | 6 Bar | 9 Bar  | 12 Bar |           |
| 2.5                    | 250         | 3 HP     | 3 HP  | 4 HP   | 5.5 HP | 7500 SSU  |
| 3.5                    | 350         | 3 HP     | 3 HP  | 4 HP   | 5.5 HP | 2500 SSU  |
| 4.5                    | 450         | 2 HP     | 3 HP  | 4 HP   | 4 HP   | 750 SSU   |
| 7.5                    | 750         | 2 HP     | 3 HP  | 4 HP   | 5.5 HP | 750 SSU   |
| 9                      | 900         | 3 HP     | 4 HP  | 5.5 HP | 7.5 HP | 100 SSU   |

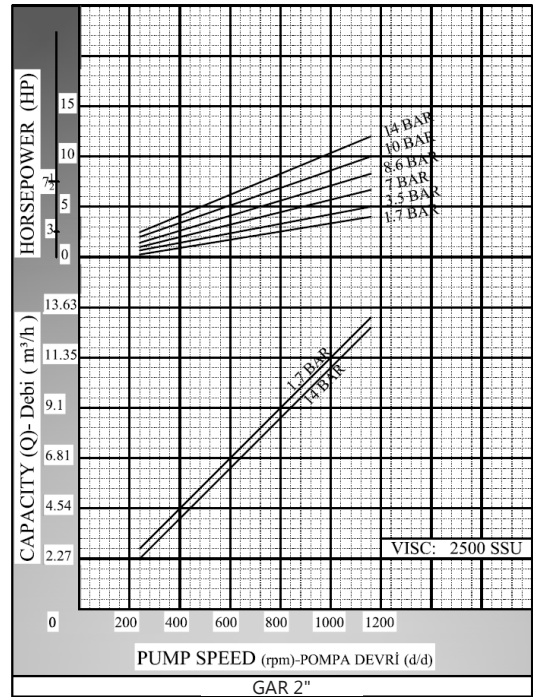
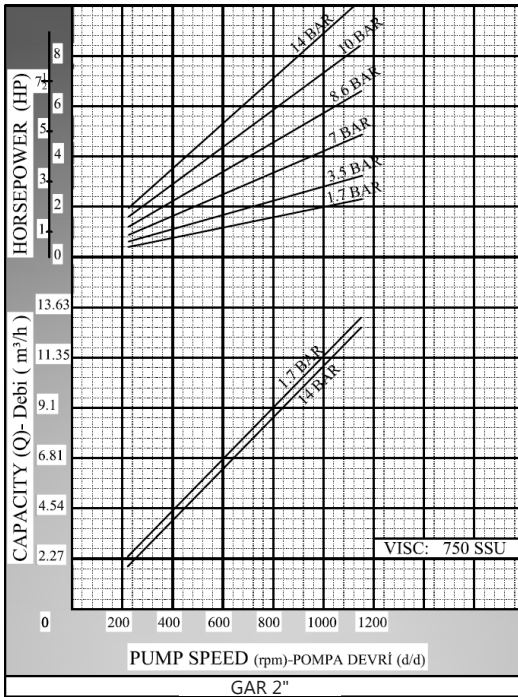
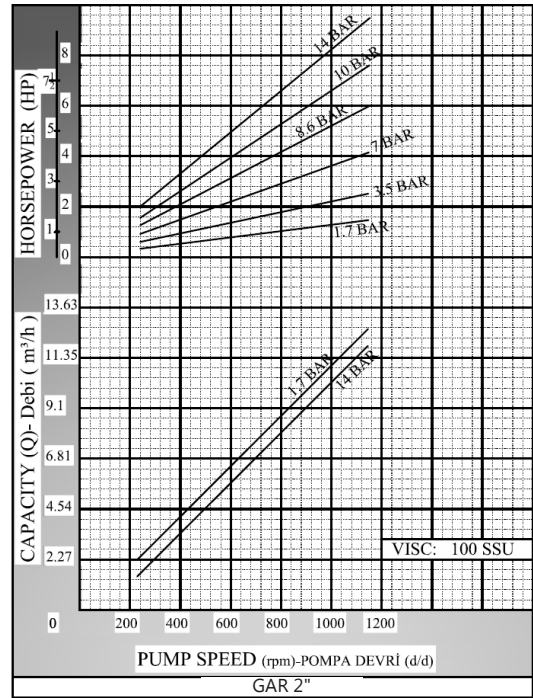
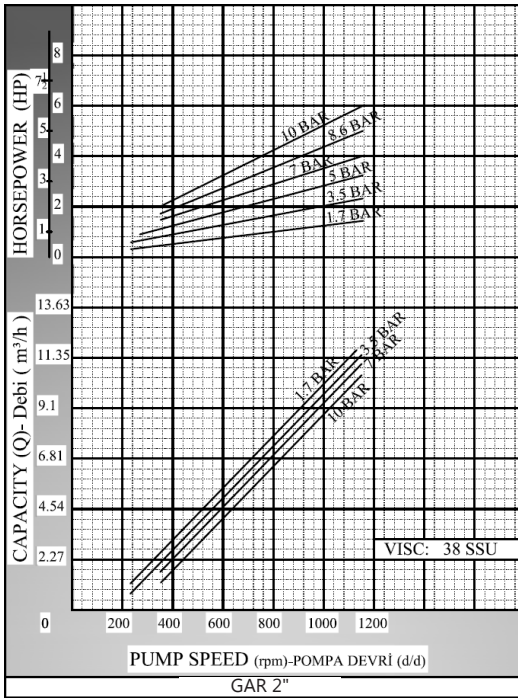
| Motor Powers |               |
|--------------|---------------|
| 2 HP         | 750 d/d (rpm) |
| 3 HP         | 900 d/d (rpm) |
| Motor Body   |               |
| 112          |               |

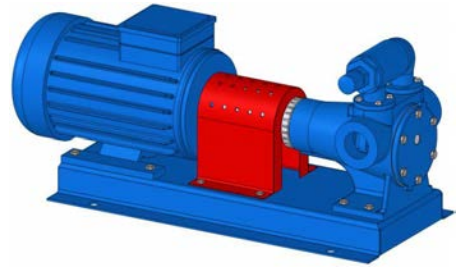
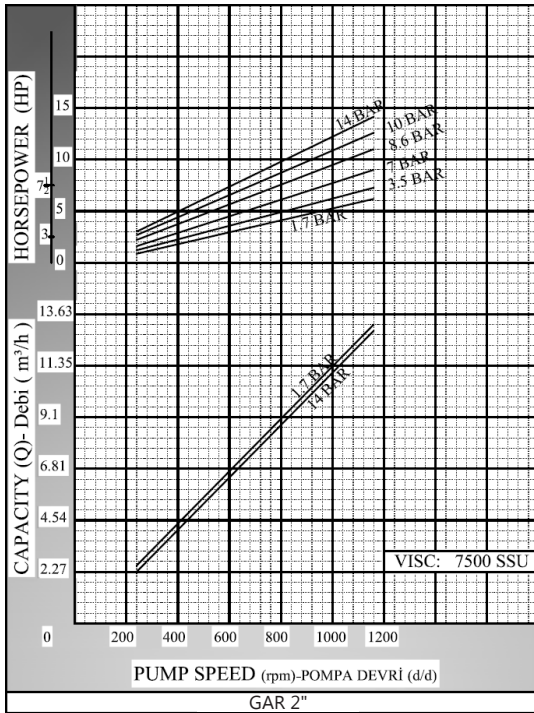
| Motor Powers |               |
|--------------|---------------|
| 3 HP         | 750 d/d (rpm) |
| 4 HP         | 750 d/d (rpm) |
| 4 HP         | 900 d/d (rpm) |
| 5.5 HP       | 900 d/d (rpm) |
| 7.5 HP       | 900 d/d (rpm) |
| Motor Body   |               |
| 132          |               |

| Motor Powers |               |
|--------------|---------------|
| 5.5 HP       | 750 d/d (rpm) |
| Motor Body   |               |
| 160          |               |

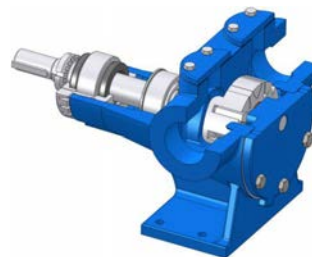
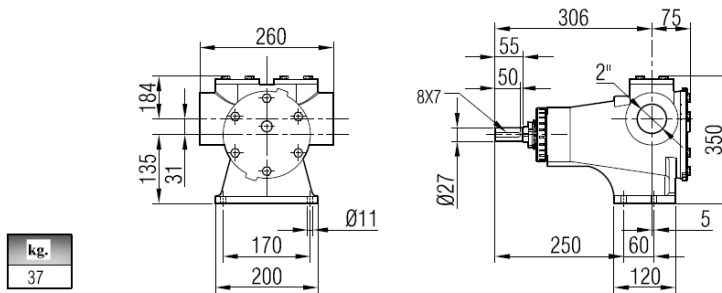
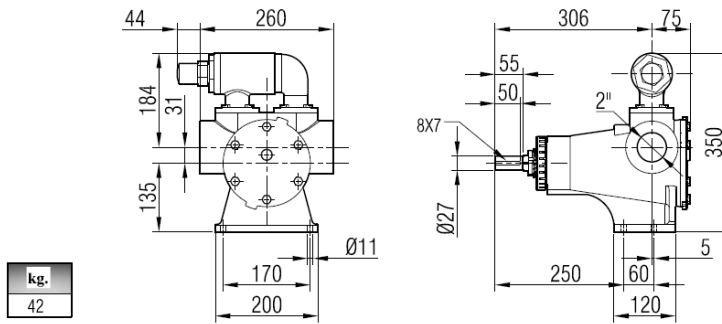


## Pump Dimensions - Capacity Graphs:



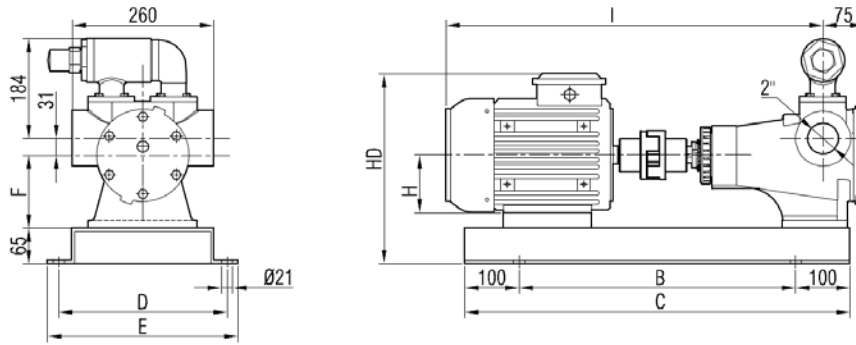


### Pump Dimensions:

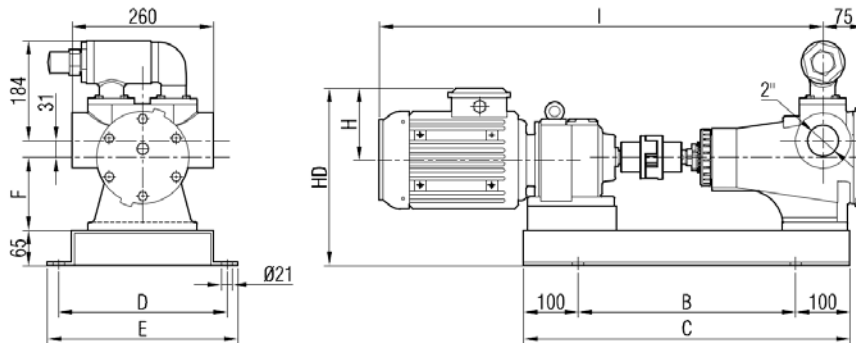




## Coupling Dimensions - Motor and gearbox drive:



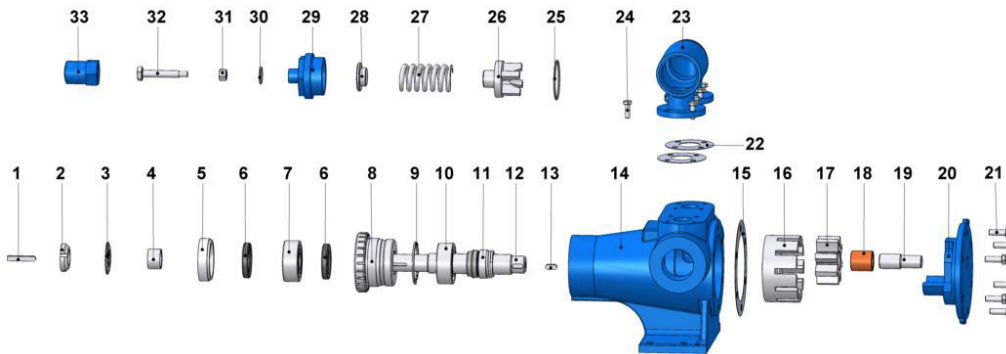
| Motor Power & Speed |               |            | I   | HD  | H   | B   | C   | D   | E   | F   | Kg  |
|---------------------|---------------|------------|-----|-----|-----|-----|-----|-----|-----|-----|-----|
| 2 HP / 1.5 kw       | 750 d/d (rpm) | MOTOR 112M | 747 | 346 | 112 | 500 | 700 | 310 | 350 | 135 | 91  |
| 3 HP / 2.2 kw       | 900 d/d (rpm) |            |     |     |     |     |     |     |     |     |     |
| 3 HP / 2.2 kw       | 750 d/d (rpm) | MOTOR 132S | 792 | 368 | 132 | 600 | 800 | 310 | 350 | 135 | 98  |
| 4 HP / 3 kw         | 900 d/d (rpm) |            |     |     |     |     |     |     |     |     | 99  |
| 4 HP / 3 kw         | 750 d/d (rpm) | MOTOR 132M | 830 | 368 | 132 | 600 | 800 | 310 | 350 | 135 | 106 |
| 5.5 HP / 4 kw       | 900 d/d (rpm) |            |     |     |     |     |     |     |     |     | 110 |
| 7.5 HP / 5.5 kw     | 900 d/d (rpm) | MOTOR 160M | 938 | 450 | 160 | 750 | 950 | 390 | 430 | 160 | 115 |
| 5.5 HP / 4 kw       | 750 d/d (rpm) |            |     |     |     |     |     |     |     |     | 139 |



| Motor Power & Speed            |                              |             | I    | HD  | H   | B   | C   | D   | E   | F   | Kg  |
|--------------------------------|------------------------------|-------------|------|-----|-----|-----|-----|-----|-----|-----|-----|
| 2 HP / 1.5 kw                  | 105/450 d/d (rpm)            | IRAM52/90L  | 817  | 327 | 132 | 420 | 620 | 310 | 350 | 135 | 90  |
| 4 HP / 3 kw                    | 280/600 d/d (rpm)            | IRAM52/100L | 846  | 336 | 97  |     |     |     |     |     |     |
| 3 HP / 2.2 kw -<br>4 HP / 3 kw | 50/234 - 65/570<br>d/d (rpm) | IRAM62/100L | 875  | 330 | 141 | 500 | 700 | 310 | 350 | 135 | 107 |
| 5.5 HP / 4 kw                  | 87/570 d/d (rpm)             | IRAM62/112M | 937  | 338 | 149 |     |     |     |     |     | 107 |
| 7.5 HP / 5.5 kw                | 75/540 d/d (rpm)             | IRAM72/132S | 1025 | 371 | 182 | 600 | 800 |     |     | 140 | 141 |

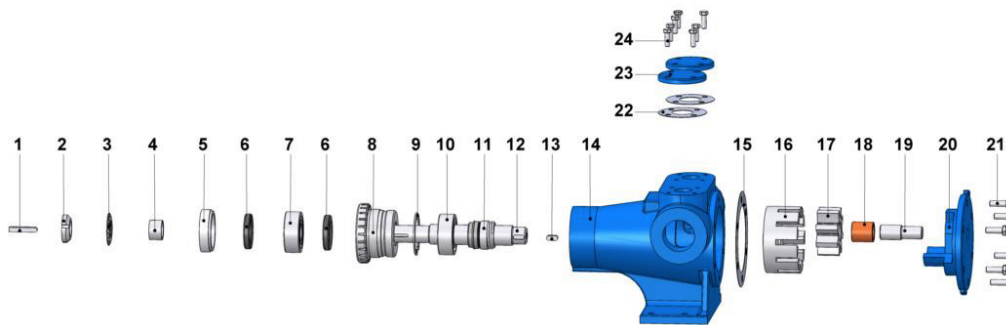


## Spare Parts List - Sealed with mechanical seal, and pressure relief valve on cover:



| No. | Part Name.                                  | Qty. | No. | Part Name.         | Qty. | No. | Part Name.                     | Qty. |
|-----|---|------|-----|--------------------|------|-----|--------------------------------|------|
| 1   | Coupling Key 8x7x50 AB                      | 1    | 12  | Shaft              | 1    | 23  | Pressure Relief Valve - Bypass | 1    |
| 2   | Lock Nut                                    | 1    | 13  | Rotor Key 8x7x20 A | 1    | 24  | Hex Bolt M8x25                 | 8    |
| 3   | Lock Washer                                 | 1    | 14  | Casing             | 1    | 25  | Bypass O-Ring                  | 1    |
| 4   | Spacer                                      | 1    | 15  | Cover Gasket       | 1    | 26  | Valve                          | 1    |
| 5   | Pulley Cover                                | 1    | 16  | Rotor Gear         | 1    | 27  | Spring                         | 1    |
| 6   | Lip Seal $\phi 35 \times \phi 62 \times 10$ | 2    | 17  | Idler Gear         | 1    | 28  | Washer                         | 1    |
| 7   | Ball Bearing (2306)                         | 1    | 18  | Idler Gear Bushing | 1    | 29  | Bypass Cover                   | 1    |
| 8   | Pulley                                      | 1    | 19  | Cover Pin          | 1    | 30  | Cap O-Ring                     | 1    |
| 9   | Internal Circlip ( $\phi 72$ )              | 1    | 20  | Blind Cover        | 1    | 31  | Nut M12                        | 1    |
| 10  | Bearing (3207)                              | 1    | 21  | Hex Bolt M10x30    | 6    | 32  | Adjusting Screw M12x80         | 1    |
| 11  | Mechanical Seal $\phi 35$                   | 1    | 22  | Bypass Gasket      | 1    | 33  | Cap                            | 1    |

## Spare Parts List - Sealed with mechanical seal, and with blind cover:



| No. | Part Name.                                  | Qty. | No. | Part Name.                     | Qty. | No. | Part Name.                     | Qty. |
|-----|---|------|-----|--------------------------------|------|-----|--------------------------------|------|
| 1   | Coupling Key 8x7x50 AB                      | 1    | 9   | Internal Circlip ( $\phi 72$ ) | 1    | 17  | Idler Gear                     | 1    |
| 2   | Lock Nut                                    | 1    | 10  | Ball Bearing (3207)            | 1    | 18  | Idler Gear Bushing             | 1    |
| 3   | Lock Washer                                 | 1    | 11  | Mechanical Seal $\phi 35$      | 1    | 19  | Cover Pin                      | 1    |
| 4   | Spacer                                      | 1    | 12  | Shaft                          | 1    | 20  | Blind Cover                    | 1    |
| 5   | Pulley Cover                                | 1    | 13  | Rotor Key 8x7x20 A             | 1    | 21  | Hex Bolt M10x30                | 6    |
| 6   | Lip Seal $\phi 35 \times \phi 62 \times 10$ | 2    | 14  | Casing                         | 1    | 22  | Bypass Gasket                  | 2    |
| 7   | Ball Bearing (2306)                         | 1    | 15  | Cover Gasket                   | 1    | 23  | Pressure Relief Valve - Bypass | 2    |
| 8   | Pulley                                      | 1    | 16  | Rotor Gear                     | 1    | 24  | Hex Bolt M8x25                 | 8    |