



2" GOQ Helical Gear Pump



Performance:

Flow rate	20 m ³ /h
Pressure	1 - 10 bar
Temperature	0 - 200 °C
Speed	1 - 1500 d/d
Viscosity	100 - 2500 SSU

Technical Features:

- ✓ Helical gear pump
- ✓ 2" flanged threaded connections
- ✓ Designed for medium pressure, high temperature applications
- ✓ Compact design
- ✓ Various material options
- ✓ Various sealing options
- ✓ Pressure relief valve on cover
- ✓ External jacket cover to maintain liquid temperature available
- ✓ 230v, three phase 50/60hz motors available
- ✓ Motor and gearbox drive available
- ✓ Manufactured according to CE regulations

Applications:

- ✓ Fuel oil, diesel fuel and gas oil transfer
- ✓ Molasses transfer
- ✓ Lubrication applications
- ✓ Coolant transfer
- ✓ Any fluids with lubricating properties
- ✓ Not suitable for fluids containing abrasive particles

Material Options:

- ✓ Pump body, covers & gears: Cast iron, steel cast, stainless AISI 304/316 cast
- ✓ Bearings: Snbz 12 bronze, bearing, carbon graphite, Ina bushing bearing
- ✓ Sealing: Soft seal, mechanical seal



Capacity & Power Table					
Capacity (Q)	Speed (rpm)	Pressure			Viscosity
		0 Bar	3.5 Bar	7 Bar	
3.7	300	2 HP	3 HP	3 HP	25000 SSU
6.3	500	3 HP	3 HP	4 HP	7500 SSU
10.5	750	2 HP	3 HP	4 HP	2500 SSU
14	1000	3 HP	4 HP	5.5 HP	750 SSU
18.7	1400	4 HP	5.5 HP	7.5 HP	100 SSU

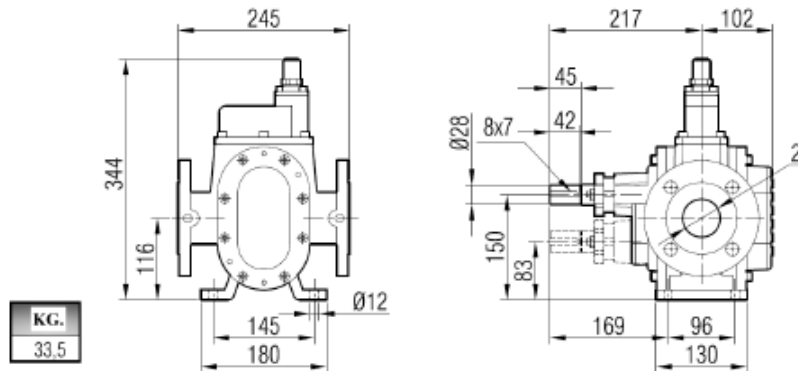
Motor Powers	
4 HP	1400 d/d (rpm)
Motor Body	
100	

Motor Powers	
2 HP	750 d/d (rpm)
3 HP	900 d/d (rpm)
5.5 HP	1400 d/d (rpm)
Motor Body	
112	

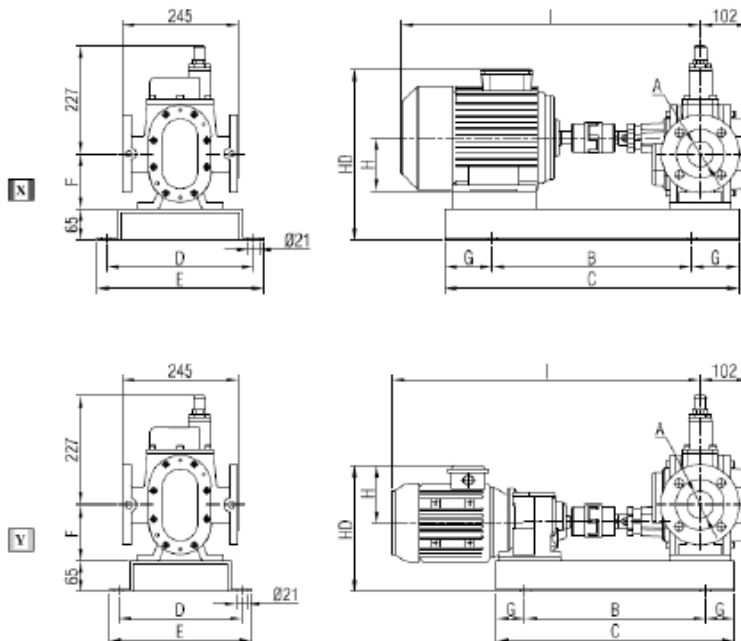
Motor Powers	
3 HP	750 d/d (rpm)
4 HP	750 d/d (rpm)
4 HP	900 d/d (rpm)
5.5 HP	900 d/d (rpm)
7.5 HP	1400 d/d (rpm)
Motor Body	
132	



Pump Dimensions:



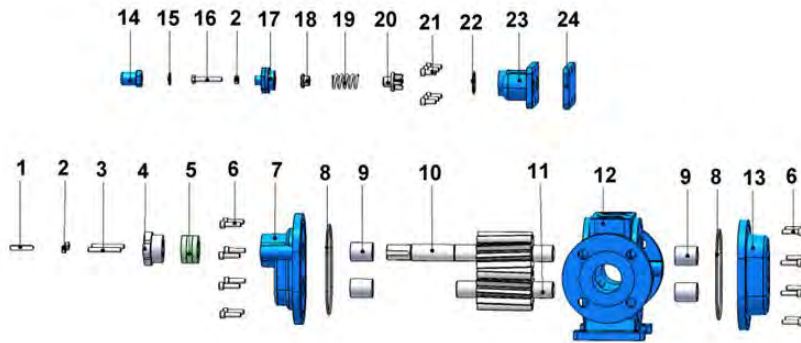
Coupling Dimensions - Motor Gearbox Drive:





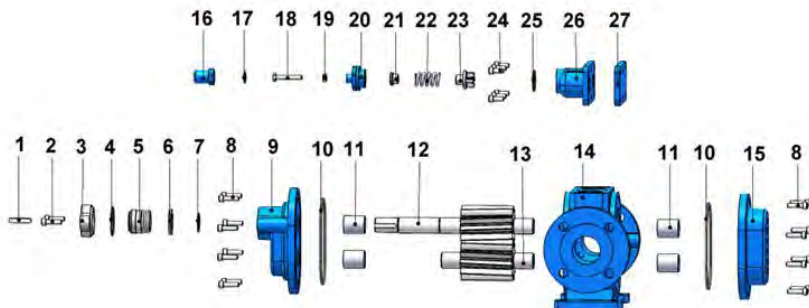
Motor Power & Speed			I	HD	H	B	C	D	E	F	G	Kg											
X	2 hp / 1.5 kw	750 d/d (rpm)	MOTOR 112M	631	359	112	420	620	310	350	116	100	83										
	3 hp / 2.2 kw	900 d/d (rpm)																					
	3 hp / 2.2 kw	750 d/d (rpm)																					
	4 hp / 3 kw	900 d/d (rpm)	MOTOR 132S	692	383	132	500	700					89										
	4 hp / 3 kw	750 d/d (rpm)																					
	5.5 hp / 4 kw	900 d/d (rpm)	MOTOR 132M	730									98										
	5.5 hp / 4 kw	750 d/d (rpm)																					
	7.5 hp / 5.5 kw	750 d/d (rpm)	MOTOR 160M	850	447	160	680	880					390	430	127		129						
	7.5 hp / 5.5 kw	750 d/d (rpm)																					
10 hp / 7.5 kw	900 d/d (rpm)																						
Y	1 hp / 0.75 kw	200 / 400 d/d (rpm)	IRAM 42/80	649	262	118	380	500	260	300	116	60	60										
	1.5 hp / 1.1 kw	200 / 400 d/d (rpm)	IRAM 42/90S	668	276	132							550	124	71								
	2 hp / 1.5 kw	200 / 545 d/d (rpm)	IRAM 52/90L	729	282		430	620								310	350	149	100	105			
	4 hp / 3 kw	280 / 545 d/d (rpm)	IRAM 52/100L	758	291	141							420	310	350						149	100	105
	5.5 hp / 4 kw	200 / 570 d/d (rpm)	IRAM 62/112M	842	318																		

Spare Parts List - Sealed with soft seal and pressure relief valve on cover:



No.	Part Name.	Qty.	No.	Part Name.	Qty.	No.	Part Name.	Qty.
1	Coupling Key 8x7x42 AB	1	9	Ina Bearing	4	17	Bypass Cover	1
2	Nut M8	3	10	Driving Shaft	1	18	Washer	1
3	Stud M8x60	2	11	Driven Shaft	1	19	Spring	1
4	Packing Press	1	12	Casing	1	20	Valve	1
5	Packing Gland / Soft Seal	1 TK	13	Back Cover	1	21	Inbus Bolt M8x20	6
6	Imbus Bolt M8x30	16	14	Cap	1	22	Bypass O-Ring	1
7	Front Cover	1	15	Cap O-Ring	1	23	Pressure Relief Valve	1
8	Cover O-Ring	2	16	Adjusting Screw M8x55	1	24	Bypass Inlets Cover	1

Spare Parts List - Sealed with mechanical seal, and pressure relief valve on cover:



No.	Part Name.	Qty.	No.	Part Name.	Qty.	No.	Part Name.	Qty.
1	Coupling Key 8x7x42 AB	1	10	Cover O-Ring	2	19	Nut M8	1
2	Adjusting Screw M8x30	2	11	Ina Bearing	4	20	Bypass Cover	1
3	Mechanical Seal Cover	1	12	Driving Shaft	1	21	Washer	1
4	Mechanical Cover O-Ring	1	13	Driven Shaft	1	22	Spring	1
5	Mechanical Seal Ø30	1	14	Casing	1	23	Valve	1
6	Mechanical Seal Washer	1	15	Back Cover	1	24	Inbus Bolt M8x20	6
7	External Circlip (Ø30)	1	16	Cap	1	25	Bypass O-Ring	1
8	Inbus Bolt M8x30	16	17	Cap O-Ring	1	26	Pressure Relief Valve	1
9	Front Cover	1	18	Adjusting Screw M8x55	1	27	Bypass Inlets Cover	1