

VERTICAL CENTRIFUGAL PUMPS

IM 150

MADE IN ITALY 

- **Product of Italian origin**
- Available in PP-PVDF
- Pump immersed in tank
- Removable motor even with pump installed
- No welded seams
- Operation also possible with heavily soiled fluids, with solids in suspension
- Max. flow rate 42 m³/h
- Max head 24 m
- Open impeller Ø 160 mm x H 4 mm (Standard impeller, for any special design with reference to the pumped fluid contact DEBEM's technical support), 10 gradi
- Simple replacement of wear bushing
- Extremely easy maintenance
- Also available without motor
- Low cost of spare parts
- Viscosity up to 500 CPS
- Column length: 500 / 800 / 1000 / 1250 mm (*other sizes on request*)
- Operating temperatures:
PP min. +3°C / max. +65°C
PVDF min. +3°C / max. +95°C
- Continuous operation: YES
- Warranty: 1 year, according to our general conditions of sale
- Spare parts: to identify the spare parts check the exploded views provided at the end of the operation and maintenance manual.

| MODEL | Kw MOTOR | HP | MOTOR SIZE | RPM | MOTOR SPECIFICATIONS |
|-------|----------|-----|------------|------|--|
| IM150 | 4 | 5,5 | B5 | 2900 | THREE-PHASE 230/400 V-50/60 HZ 2-POLE efficiency class IE2 protection rating IP55 - Ambient temperature -30°C + 45° C / ATEX motor available |

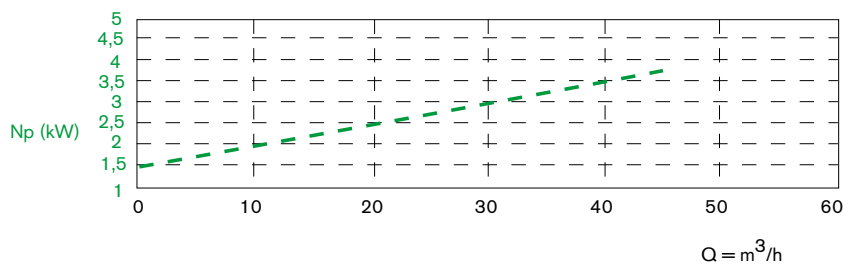
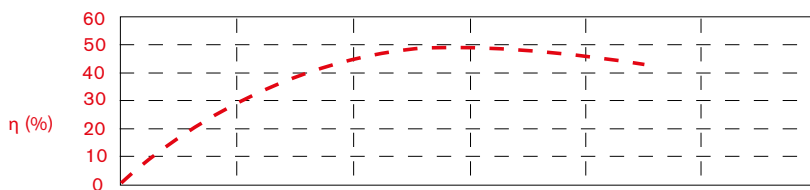
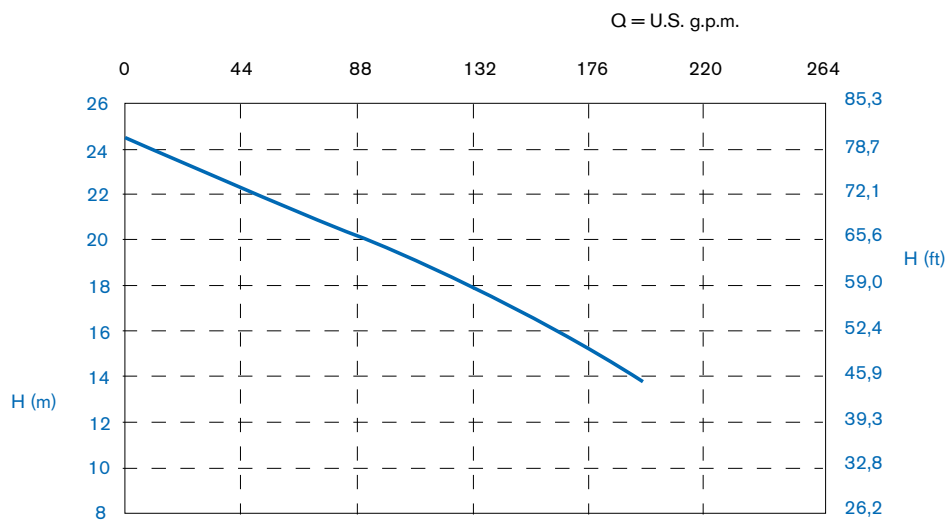
ATTENTION: technical data for standard motor, for any special design with reference to the pumped fluid contact DEBEM's technical support.



Intake connections G 2" 1/2 f (or DN 65 on request)
Delivery connections G 2" m (or DN 50 on request)
Max. flow rate 42 m³/h
Max head 24 m
Construction materials PP - PVDF

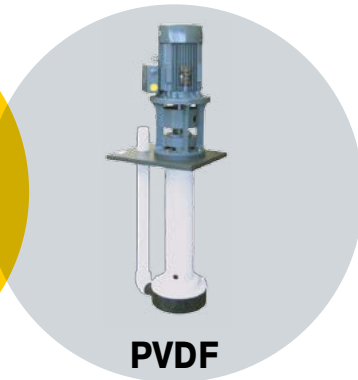
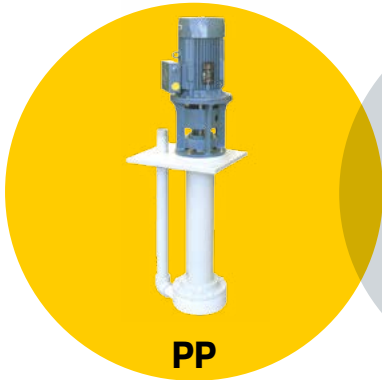
CE

DEBEM
MADE IN ITALY



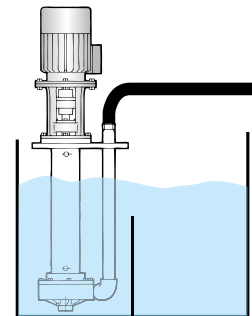
The curves and performance values refer to pumps spare delivery outlet and water at 20°C, 2 pole motor 50 Hz (2900rpm).

AVAILABLE MATERIALS



INSTALLATION

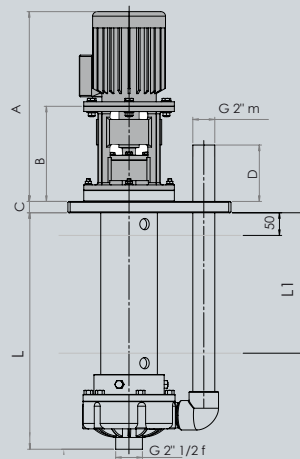
IN TANK



| L column | Peso PP | Peso PVDF | L1 max. |
|----------|---------|-----------|---------|
| 500 | 28 Kg | 30 Kg | 300 |
| 800 | 31 Kg | 33 Kg | 600 |
| 1000 | 33 Kg | 35 Kg | 800 |
| 1250 | 36 Kg | 38 Kg | 1050 |

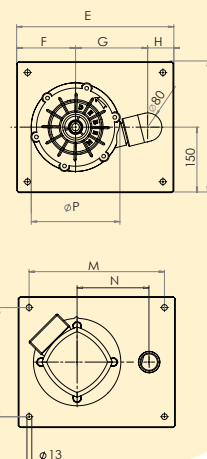
(Dimensions in mm - Other sizes available on request)

IM150 PP/PVDF



(Dimensions in mm)

IM150 PP/PVDF



Packaging: wooden cage, for Pesos and dimensions contact Debem staff.

| MODEL | POWER | Ø PASSING SOLIDS | A | B | C | D | E | F | G | H | I | M | N | O | P | KG MOTOR |
|--------|---------------|------------------|-----|-----|----|-----|-----|-----|-----|----|-----|-----|-----|-----|------|----------|
| IM 150 | 4 Kw - 5.5 HP | 2 | 532 | 233 | 25 | 132 | 480 | 170 | 215 | 95 | 380 | 430 | 215 | 330 | Ø275 | 36 |

IM COMPOSITION CODE

ex. **IM150P-V-0800-N**

IM150 in PP, O-Ring Viton, column length 800 mm, three-phase motor

| IM150 | P - | V | 0800 | N |
|-----------------------|---|-------------------------------------|--|---|
| PUMP MODEL | PUMP MATERIAL | O-RING | COLUMN LENGTH | MOTOR |
| IM150 - IM 150 | P - Polypropylene FC - PVDF+CF | D - EPDM V - Viton | 0500 - 500 mm 0800 - 800 mm 1000 - 1000 mm 1250 - 1250 mm | N* - Three-phase motor M - Single-phase motor A - ATEX motor |

*Standard motor is the three-phase induction type with European voltage (2-pole) 50Hz

PRODUCT APPLICATION

