

# HORIZONTAL CENTRIFUGAL PUMPS

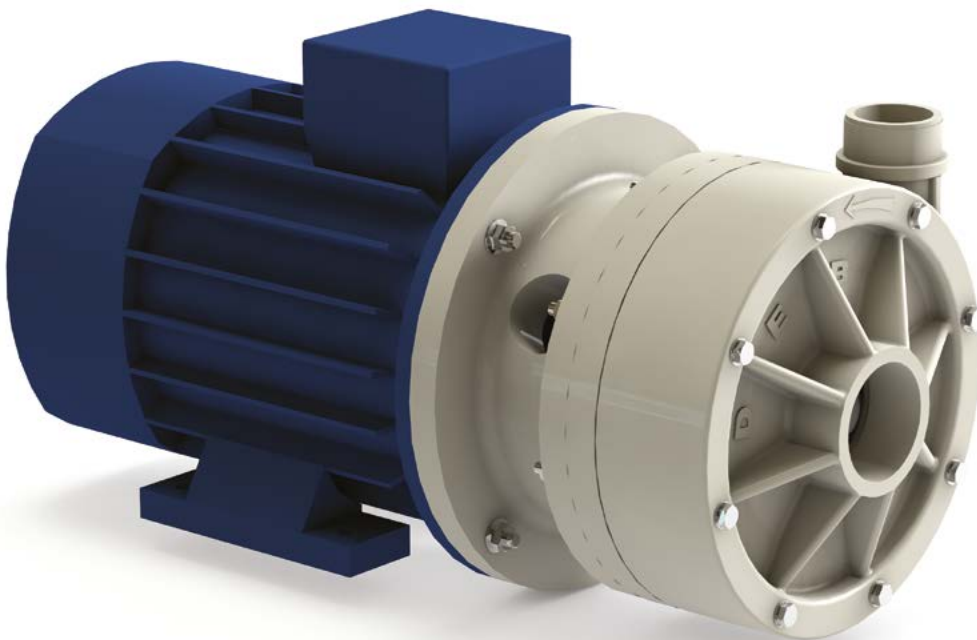
## MB 150

MADE IN ITALY 

- **Product of Italian origin**
- Available in PP-PVDF
- Below head use
- No welded seams
- Seal: available with mechanical bellows seal (316 STAINLESS STEEL spring - SILICON CARBIDE + CERAMIC / SILICON CARBIDE + SILICON CARBIDE sealing ring) or with lip seal (VITON or EPDM)
- Operation also possible with heavily soiled fluids, with solids in suspension
- Max. flow rate 42 m<sup>3</sup>/h
- Max head 24 m
- Open impeller Ø 160 mm x H 4 mm (Standard impeller, for any special design with reference to the pumped fluid contact DEBEM's technical support)
- Extremely easy maintenance
- Low cost of spare parts
- Viscosity up to 500 CPS
- OPERATING TEMPERATURES:  
PP min. +3°C / max. +65°C  
PVDF min. +3°C / max. +95°C
- Continuous operation: YES
- Warranty: 1 year, according to our general conditions of sale.
- Spare parts: to identify the spare parts check the exploded views provided at the end of the operation and maintenance manual.

MODEL	Kw MOTOR	HP	MOTOR SIZE	RPM	MOTOR SPECIFICATIONS
MB150	4	5,5	B3+B5	2900	THREE-PHASE 230 / 400 V - 50 / 60 HZ 2 POLE efficiency class IE2 protection rating IP55 - Ambient temperature -30°C + 45° C / ATEX motor available

ATTENTION: technical data for standard motor, for any special design with reference to the pumped fluid contact DEBEM's technical support.



CE

**Intake connections** G 2" 1/2 f (or DN 65 on request)

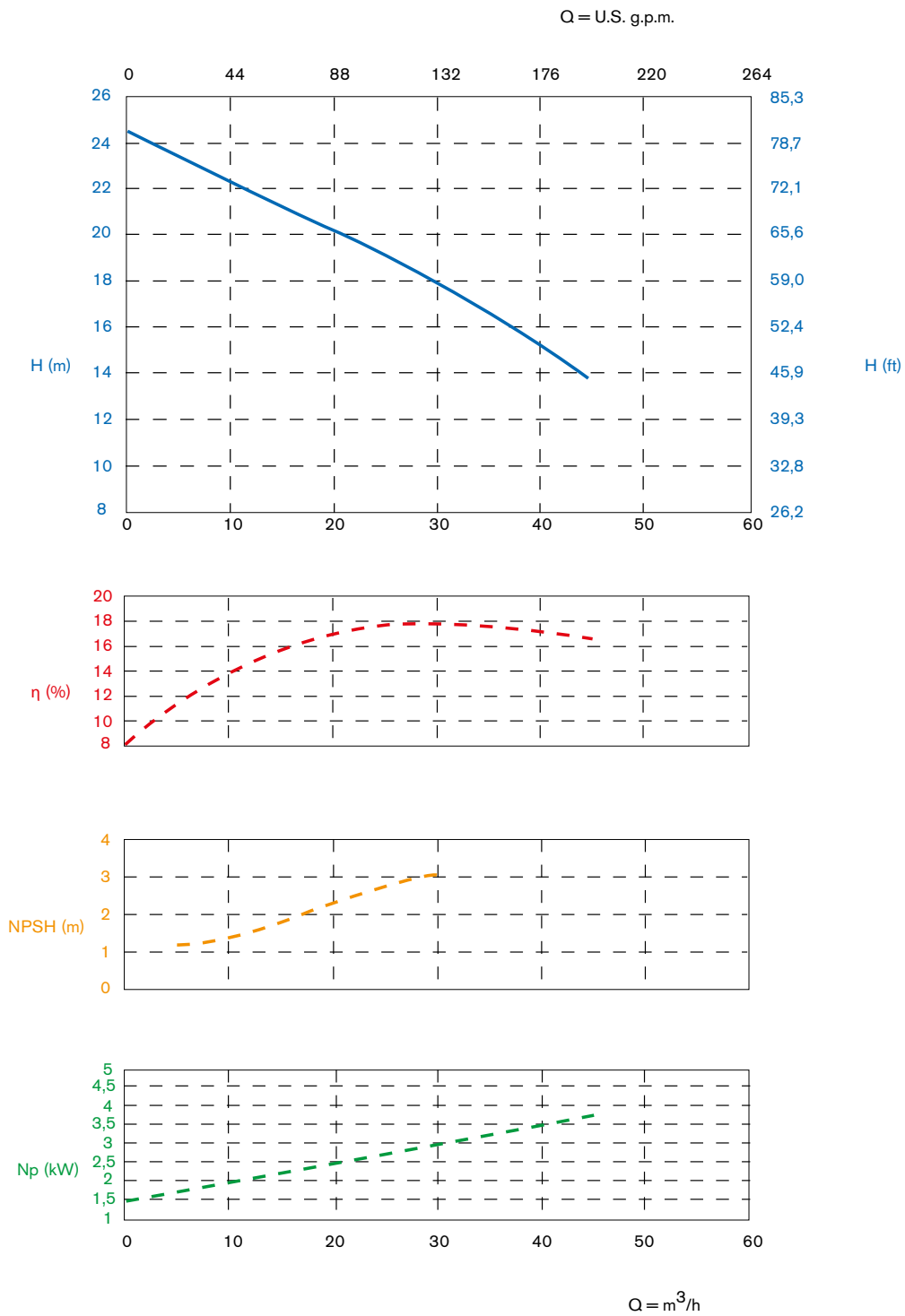
**Delivery connections** G 2" m (or DN 50 on request)

**Max. flow rate** 42 m<sup>3</sup>/h

**Max. head** 24 m

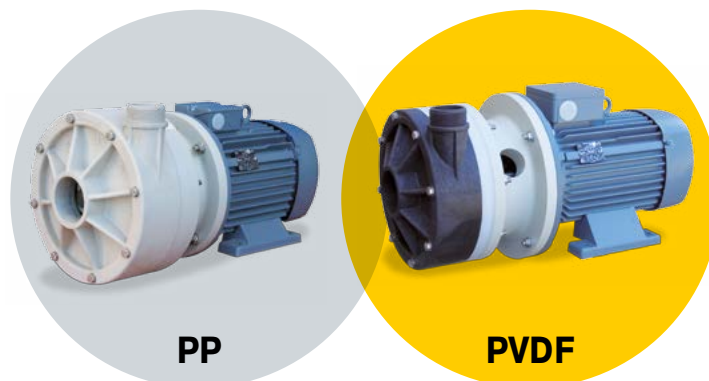
**Construction materials** PP - PVDF





The curves and performance values refer to pumps spare delivery outlet and water at 20°C, 2 pole motor 50 Hz (2900rpm).

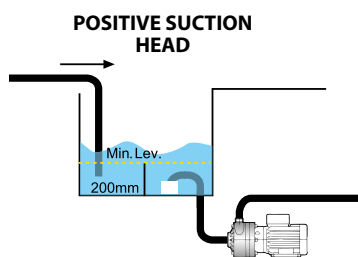
## AVAILABLE MATERIAL



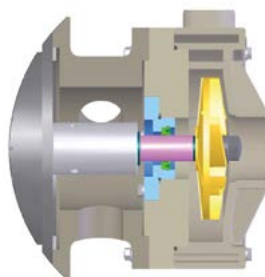
PP

PVDF

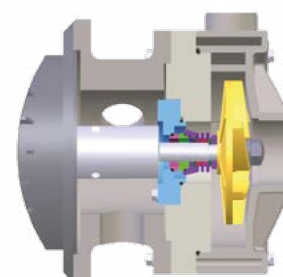
## INSTALLATION



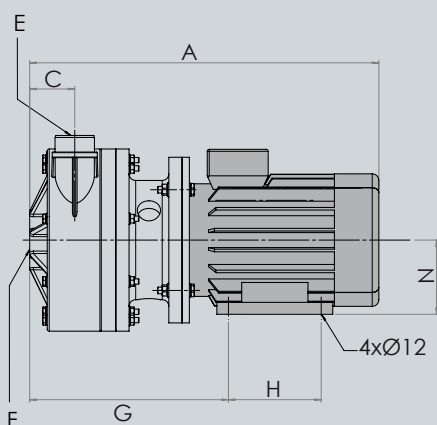
TL=LIP SEAL



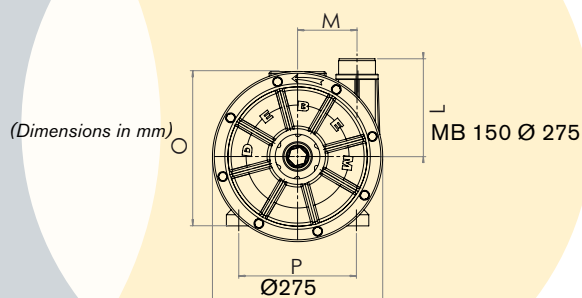
TS=BELLOWS SEAL



MB150  
PP/PVDF



MB150  
PP/PVDF



**Packing:** wooden case - 69 x 37 x 48 cm-weight 15 Kg  
(the weight only refers to the packaging without the pump in it).

MODEL	SEAL	POWER	Ø PASSING SOLIDS	A	C	E	F	G	H	L	M	N	O	P	KG PP	KG PVDF
MB150	TL-TS	4 Kw 5.5 HP	2	527	68	G 2" m o DN 50	G 2" 1/2 f o DN 65	300	140	158	96	112	249	190	44	47

## MB COMPOSITION CODE

ex. **MB150--P-TLVN**

MB 150 in PP, Viton lip seal, three-phase motor

MB150	P -	TLV	N
PUMP MODEL	PUMP MATERIAL	TYPE OF SEAL	MOTOR
<b>MB150</b> - MB 150	<b>P</b> - Polypropylene <b>FC</b> - PVDF+CF	<b>TLV</b> - Viton lip seal <b>TLD</b> - EPDM lip seal <b>TSV</b> - Viton bellow seal <b>TSD</b> - EPDM bellow seal	<b>N*</b> - Three-phase motor <b>M</b> - Single-phase motor <b>A</b> - ATEX motor

\* Standard motor is the three-phase induction type with European voltage (2-pole) 50Hz

## PRODUCT APPLICATION

