



TM 1-phase
3-phase
50Hz

Submersible titanium sewerwater pump

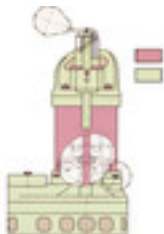
Titanium is used in all the wet metal parts of the TM pumps. Titanium has a far stronger oxide film on its surface than stainless steel does. This prevents the pumps from being corroded in the seawater which has a very high chlorine ion concentration.





Vortex Impeller

This impeller is used mainly to avoid clogging or wear by large or stringy solids in the water. It accelerates part of the water to great speed, and this speed is used to smoothly move all the water from inlet to outlet.



Resistant to corrosion

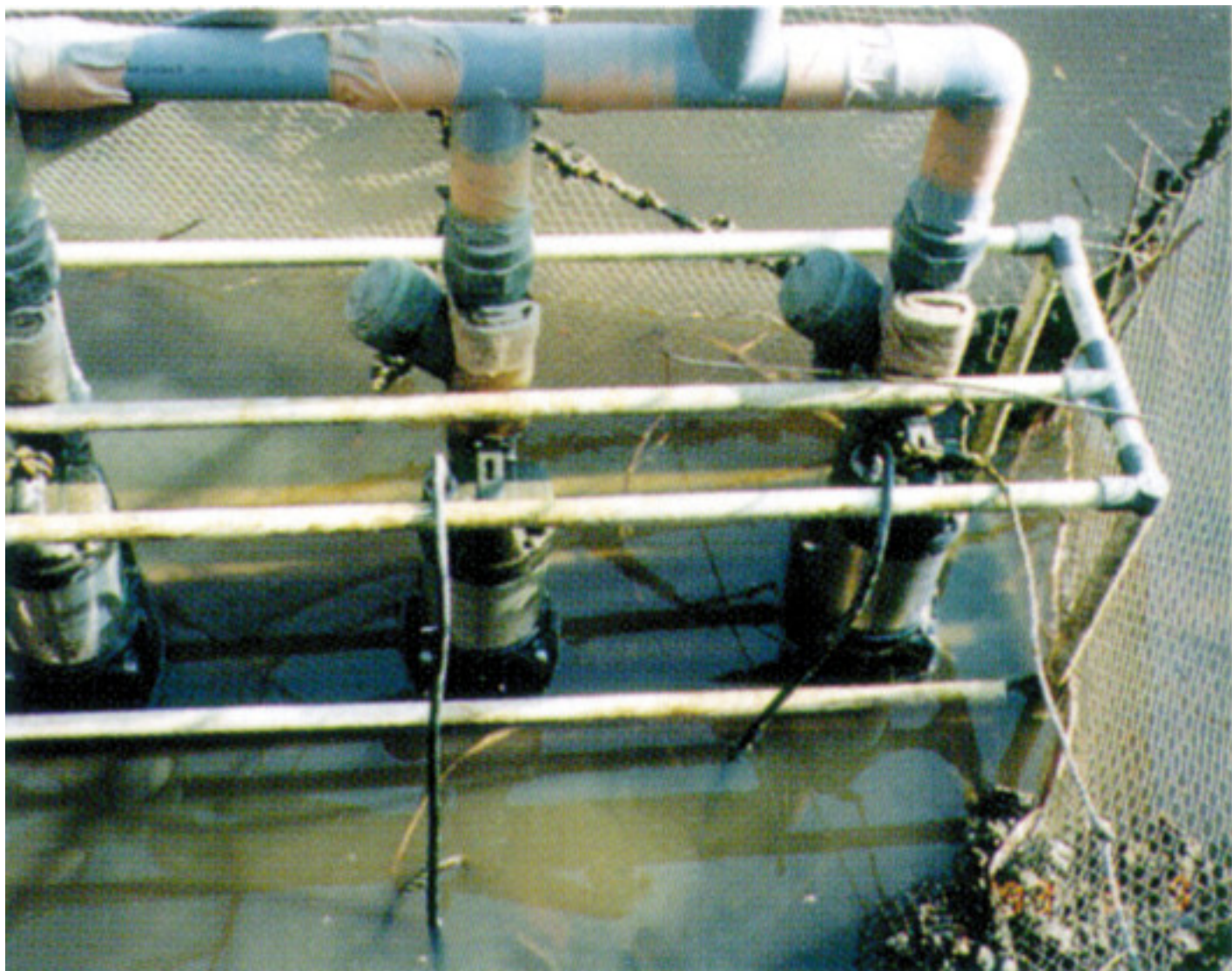
All parts in contact with the medium are made of titanium. Titanium has a far stronger oxide film on its surface than stainless steel does. This prevents the pump from being corroded in the seawater which has a very high chlorine ion concentration.





Stainless steel corrodes, titanium doesn't.



Supplying seawater to a prawn farm

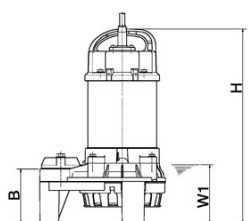
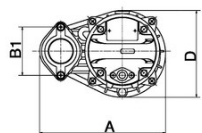
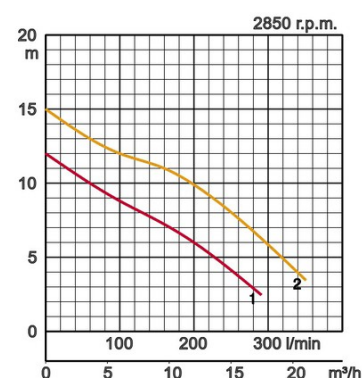


Specifications:

Model	Colour code curve	Bore mm	Power output kW	Phases	r.p.m.	Head max. m	Capacity max. l/min	Starting method	Dry weight kg without cable	Impeller passage mm
50TM2.4S	 1	50	0,4	1	2850	12,0	290	condensor	6,7	10
50TM2.75	 2	50	0,75	3	2850	15,0	350	direct	7,8	10



ø Discharge bore mm		50mm	
Pumping Fluid	Temperature		0-40°C
	Type of Fluid		Saltwater, Seawater
Pump	Compo- nents	Impeller	Vortex impeller
		Shaft Seal	Double mechanical seal
		Bearings	Shielded ball bearings
	Material	Impeller	Glass fibre reinforced plastic
		Upper casing	Glass fibre reinforced plastic
		Lower casing	Glass fibre reinforced plastic
		Shaft Seal	Silicon carbide in oil bath
	Motor	Type, Poles	
Lubrication		Turbine oil (ISO VG15)	
Insulation		Insulation class E	
Motor Protector (built-in)		Circle thermal cut-out	
Phase / Voltage		Single phase 230V / 50Hz, 3-phase / 400V / 50Hz / d.o.l.	
Material		Casing	Titanium
		Shaft	Titanium
		Cable	Rubber, 10m H07RN-F
Discharge Connection			Inside thread, flange



Dimensions in mm:

Model	A	B	B1	D	H	W1
50TM2.4S	236	102	90	162	360	110
50TM2.75	236	102	90	162	374	110

W1: lowest running water level

Please mind: discharge bend, duck foot bend and stand set are accessories and must be ordered separately



Contributing to World-wide Prosperity and Understanding through Worker- and Environment-friendly Production.

Designed for increased productivity through fully integrated streamlined production systems, Tsurumi's factory in Kyoto (Japan) features a production capacity of a full 1 million pumps per year. Large-scale modern R&D facilities offer optimum conditions for experimenting and testing of even super-large pumps and for developing new products to expand the possibilities and applications of pumps. To provide optimum conditions for our main asset, our workers, as well as for the environment, special emphasis is placed on optimized working conditions with airconditioning, minimized dust and exhaust gas emission, comprehensive recycling and waste recovery.

We reserve the right to change specifications and designs herein for improvement without prior notice. Our pumps are for professional use only. In the event that Tsurumi (Europe) GmbH have, in exceptional cases taken over, a manufacturer's warranty, this entitles the enduser to assert remedy free of charge against Tsurumi (Europe) GmbH due to any defect to the product occurring during the guarantee period (see below), also then when the warranty claims against the seller do not or no longer exist. In the event of malfunction, which is attributable to the improper handling by the enduser, no guarantee claim shall arise. Further claims shall not result from the warranty, unless if something to the contrary has explicitly been determined. The decision as to whether remedy is effected by way of replacement or repair shall be at the choice of Tsurumi (Europe) GmbH. The claims shall be time barred after a period of three months after expiry of the guarantee period, however, not before expiry of the warranty period which is valid towards the seller. In the event of doubt, the warranty period shall correspond with the warranty period which is valid between the end-user and his seller.



sew-TM-EN

