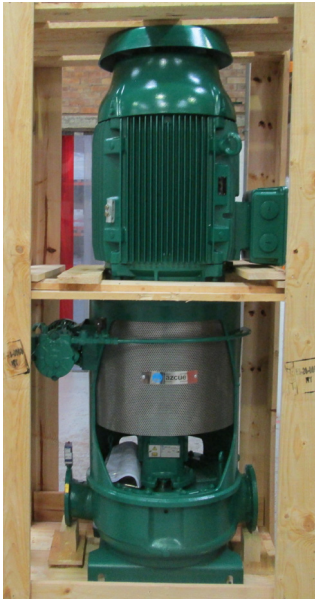




## Subsea Oil & Gas - Case Study



### Case Study Information

Customer	Subsea Oil/Gas Company
Location	United Kingdom
Enquiry Received	15th October
Order Placed	28th November
Order Dispatched	29th January

### Equipment Supplied:

#### 1 x Bombas Azcue CM-EP-125-50 Self Priming Vertical Inline Centrifugal Fire Pump

Fluid	Sea Water
Flow	210 m <sup>3</sup> /h
Total Head	90m
NPSHr	3.28m
S/discharge Ø	150/125
Pump Casing	Bronze
Impeller	Bronze
Shaft	Stainless Steel
Power	99 kW
RPM	1750
440v / 3 Phase / 60Hz	
Space heater included	

### Enquiry:

- ✓ One of our existing Subsea oil and gas clients was upgrading the fire pump system on board one of their vessels; they contacted Castle Pumps as we had proven to be reliable for past projects. The pump required needed to be self-priming, vertical in-line, compatible with sea water and certified to marine standard.

### Solution:

- ✓ This type of application is perfect for Castle Pumps as we have a vast amount of experience in the marine sector. We supplied a pump from our CM series in full bronze, fitted with an electric priming pump. This pump is ideal for installations where space is an issue; the CM series comes complete with a spacer coupling allowing access to the pump internals with minimal effort. To maintain the parts inside, the front cover is removed and access is easily made to the pump internals without disconnection from the pipework or removal of the motor and electrical connections. The pump was manufactured and marine certified in fewer than 8 working weeks.