

Magnet pump

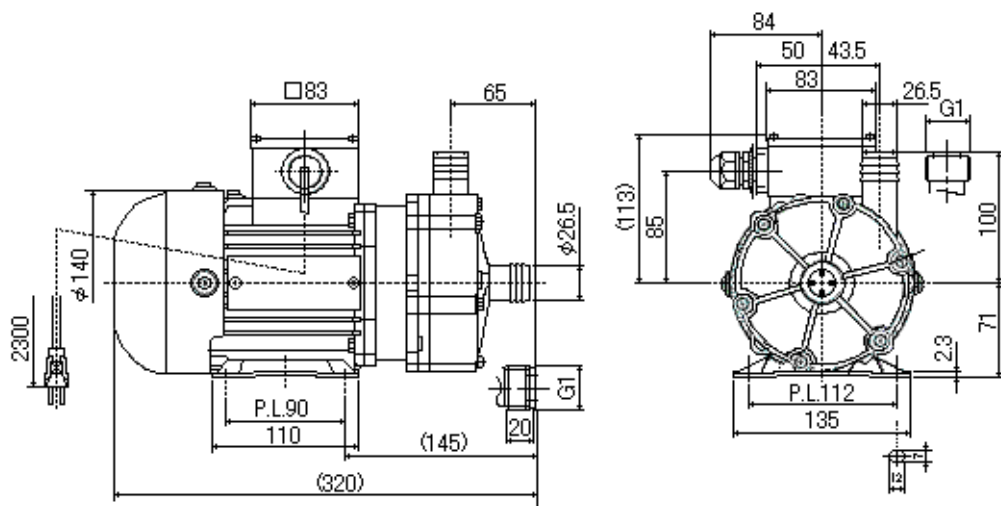
[for chemical and sea water]

(PMD)

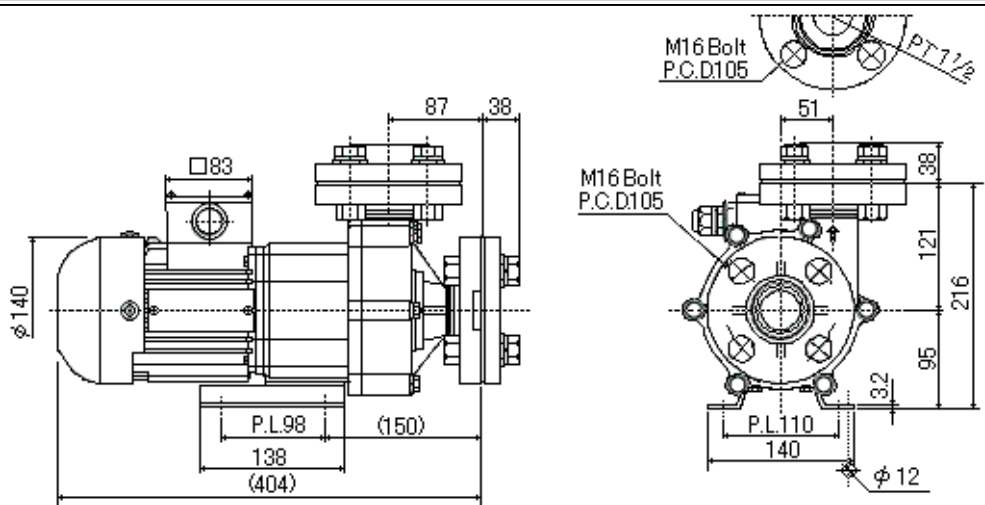
■ Outline dimension

<p>PMD-0531</p>	<p>Technical drawing of the PMD-0531 magnet pump. The side view shows a cylindrical body with a diameter of $\phi 64$ and a total length of 130. A mounting bracket is attached to the side, with a height of 1800. The pump has a 31mm diameter outlet and a 14mm diameter inlet. A ground connection labeled 'Earth' is shown. The front view shows a circular pump head with a diameter of 80 and a mounting plate (P.L.63) with a thickness of 5.5. The pump head has a diameter of 47 and a mounting hole diameter of $\phi 14$. The pump is mounted on a base with a diameter of 10 and a height of 5.5. The pump head has a diameter of 35 and a mounting hole diameter of 2.5. The pump head has a diameter of 17.5 and a mounting hole diameter of $\phi 14$.</p>
<p>PMD-221</p>	<p>Technical drawing of the PMD-221 magnet pump. The side view shows a cylindrical body with a diameter of $\phi 76$ and a total length of 179. A mounting bracket is attached to the side, with a height of 1900. The pump has a 39mm diameter outlet and a 14mm diameter inlet. The front view shows a circular pump head with a diameter of 106 and a mounting plate (P.L.90) with a thickness of 6. The pump head has a diameter of 45 and a mounting hole diameter of $\phi 14$. The pump is mounted on a base with a diameter of 10 and a height of 6. The pump head has a diameter of 63 and a mounting hole diameter of $G\frac{3}{4}$. The pump head has a diameter of 25 and a mounting hole diameter of $\phi 14$. The pump head has a diameter of 80 and a mounting hole diameter of $G\frac{3}{4}$. The pump head has a diameter of 60 and a mounting hole diameter of P.L.44.</p>
<p>PMD-371</p>	<p>Placeholder for the technical drawing of the PMD-371 magnet pump.</p>

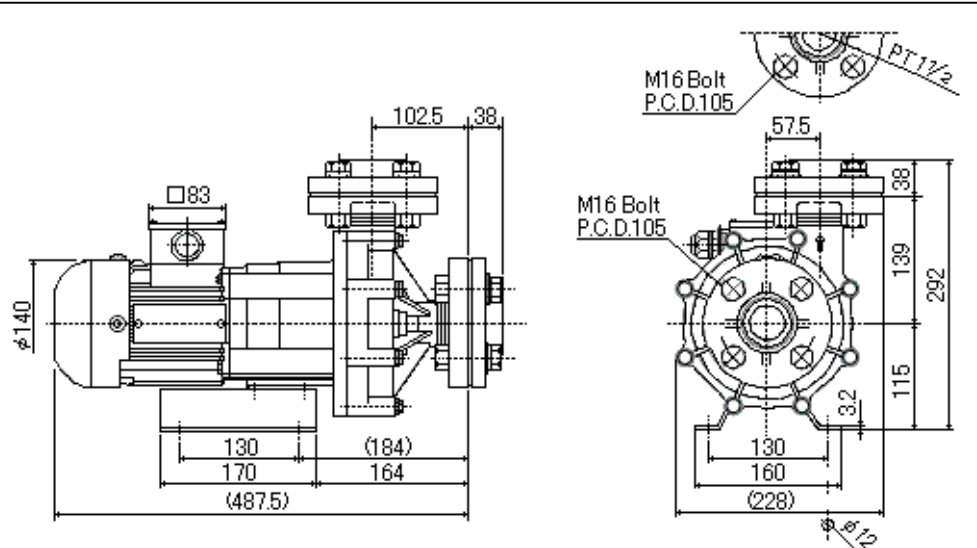
<p>PMD-421 PMD-581</p>	
<p>PMD-641 PMD-1561 PMD-643 PMD-1563</p>	
<p>PMD-2571 PMD-2573</p>	



PMD-4033



PMD-7533



BACK

三相電機株式会社
SANSO ELECTRIC CO., LTD.